



# AMERICAN HC 210

## Hydraulic Crawler Crane



WORKHORSE

### LIFT RATINGS IN POUNDS

With 77SH Hammerhead Boom, 29' Floating Mast,  
89,000 lb. Counterweight and 48,000 lb. Side Frame Counterweight

Boom Length (Feet)	Rad. Feet	Boom Angle Degrees	Counterweight Retracted Pounds	Counterweight Extended Pounds	From Boom Pt. to Ground Feet
50 feet	13	83.1	420,000 *	420,000 *	57
	15	79.7	343,010 *	361,990 *	57
	20	73.9	255,670 *	269,960 *	55
	25	67.8	202,760 *	214,370 *	53
	30	61.5	159,660	169,860	50
	35	54.6	126,840	135,040	47
	40	47.1	104,770	111,540	43
	50	27.1	76,750	81,920	28
60 feet	14	83.3	393,330 *	415,100 *	67
	15	81.4	341,290 *	360,110 *	67
	20	76.6	254,840 *	269,080 *	66
	25	71.7	202,190 *	213,790 *	64
	30	66.5	159,740	169,940	62
	35	61.2	126,880	135,080	59
	40	55.5	104,800	111,550	56
	50	42.7	76,820	81,980	46
60	24.5	59,890	64,030	30	
70 feet	14	83.4	362,810 *	382,280 *	77
	15	82.6	338,810 *	357,540 *	77
	20	78.5	253,930 *	268,060 *	76
	25	74.3	201,630 *	213,210 *	75
	30	70.1	159,790	169,910	73
	35	65.6	126,900	135,100	70
	40	61.0	104,830	111,540	68
	50	51.1	76,830	81,990	61
60	39.3	59,990	64,130	50	
70	22.5	48,570	52,020	32	
80 feet	15	83.6	335,680 *	353,700 *	87
	20	80.0	252,610 *	266,620 *	86
	25	76.3	200,790 *	211,790 *	85
	30	72.6	159,710	169,910	83
	35	68.8	126,770	134,970	81
	40	64.9	104,670	111,370	79
	50	56.7	76,620	81,780	73
	60	47.5	59,800	63,940	65
70	36.6	48,410	51,870	53	
80	21.0	40,220	43,180	34	
90 feet	16	83.6	311,750 *	328,280 *	97
	20	81.1	250,990 *	264,790 *	96
	25	77.9	199,900 *	210,820 *	95
	30	74.6	159,590	169,790	94
	35	71.3	126,630	134,830	92
	40	67.9	104,520	111,190	90
	50	60.8	76,450	81,610	85
	60	53.2	59,640	63,780	78
70	44.6	48,260	51,710	69	
80	34.3	40,090	43,060	56	
90	19.7	33,980	36,580	35	
100 feet	17	83.7	252,760 *	252,980 *	107
	20	82.0	240,590 *	245,160 *	106
	25	79.1	192,230 *	203,000 *	106
	30	76.2	159,070 *	168,150 *	104
	35	73.2	126,580	134,780	103
	40	70.2	104,490	111,120	101
	50	64.0	76,390	81,550	97
	60	57.4	59,610	63,750	91
70	50.2	48,230	51,680	83	
80	42.2	40,070	43,040	73	
90	32.5	34,050	36,650	59	
100	18.6	29,200	31,510	37	
110 feet	18	83.7	242,250 *	241,860 *	117
	20	82.7	235,880 *	235,340 *	117
	25	80.1	190,910 *	201,510 *	116

Boom Length (Feet)	Rad. Feet	Boom Angle Degrees	Counterweight Retracted Pounds	Counterweight Extended Pounds	From Boom Pt. to Ground Feet
110 feet (cont.)	30	77.4	158,190 *	167,190 *	115
	35	74.8	126,410	134,610	113
	40	72.1	104,280	110,900	112
	50	66.5	76,120	81,280	108
	60	60.7	59,320	63,460	102
	70	54.5	47,920	51,370	96
	80	47.7	39,750	42,720	87
	90	40.1	33,770	36,370	76
	100	30.9	28,940	31,250	62
	110	17.7	25,050	27,130	38
	120 feet	19	83.8	229,370 *	229,680 *
20		83.3	225,500 *	225,540 *	127
25		80.9	189,270 *	199,610 *	126
30		78.5	157,220 *	166,120 *	125
35		76.1	126,180	134,380	124
40		73.6	104,060	110,650	122
50		68.6	75,850	81,010	119
60		63.3	59,060	63,200	114
70		57.8	47,650	51,110	108
80		51.9	39,470	42,440	101
90		45.5	33,510	36,110	91
100		38.3	28,710	31,020	80
110	29.5	24,840	26,920	64	
120	16.9	21,650	23,540	40	
130 feet	20	83.8	214,470 *	214,290 *	137
	25	81.6	187,070 *	197,540 *	136
	30	79.4	156,050	164,830 *	135
	35	77.2	125,990	134,190	134
	40	74.9	103,830	110,400	133
	50	70.3	75,560	80,720	129
	60	65.5	58,760	62,890	125
	70	60.6	47,310	50,770	120
	80	55.3	39,120	42,080	113
	90	49.7	33,180	35,780	105
	100	43.6	28,370	30,680	95
	110	36.7	24,500	26,580	83
	120	28.3	21,330	23,220	67
130	16.2	18,650	20,380	41	
140 feet	21	83.8	200,710 *	200,870 *	146
	25	82.2	184,190 *	188,670 *	146
	30	80.2	154,620 *	163,230 *	145
	35	78.1	125,740	133,940	144
	40	76.0	103,570	110,420	143
	50	71.7	75,250	80,410	140
	60	67.4	58,450	62,590	136
	70	62.8	47,000	50,450	131
	80	58.1	38,800	41,770	125
	90	53.2	32,880	35,480	118
	100	47.8	28,070	30,380	110
	110	41.9	24,210	26,290	99
	120	35.3	21,040	22,930	86
	130	27.2	18,390	20,120	69
140	15.5	16,120	17,720	42	
150 feet	22	83.9	158,390 *	158,390 *	157
	25	82.7	153,980 *	153,980 *	156
	30	80.8	145,980 *	145,980 *	155
	35	78.9	125,470	133,670	155
	40	76.9	103,320	110,170	153
	50	73.0	75,000	80,160	150
	60	68.9	58,210	62,350	147
	70	64.8	46,770	50,220	142
	80	60.5	38,560	41,530	137
	90	56.0	32,680	35,280	131
100	51.2	27,870	30,180	123	

Boom Length (Feet)	Rad. Feet	Boom Angle Degrees	Counterweight Retracted Pounds	Counterweight Extended Pounds	From Boom Pt. to Ground Feet
150 feet (cont.)	110	46.1	24,010	26,090	114
	120	40.4	20,850	22,740	103
	130	34.0	18,210	19,940	89
	140	26.3	15,960	17,560	71
	150	15.0	14,030	15,220 *	43
160 feet	23	83.9	149,200 *	149,200 *	167
	25	83.2	145,580 *	145,580 *	166
	30	81.4	138,170 *	138,170 *	166
	35	79.6	125,300	131,210 *	165
	40	77.8	103,120	109,970	164
	50	74.1	74,720	79,880	161
	60	70.3	57,910	62,050	158
	70	66.5	46,430	49,880	153
	80	62.5	38,210	41,180	148
	90	58.4	32,340	34,930	143
	100	54.0	27,520	29,830	136
110	49.5	23,650	25,730	128	
120	44.5	20,480	22,370	118	
130	39.1	17,840	19,570	106	
140	32.9	15,590	17,200	92	
150	25.4	13,670	15,160	74	
160	14.5	11,980	12,560 *	45	
170 feet	24	83.9	139,380 *	139,380 *	177
	25	83.6	137,970 *	137,970 *	176
	30	81.9	131,240 *	131,240 *	176
	35	80.2	124,430 *	124,320 *	175
	40	78.5	102,830	109,680	174
	50	75.0	74,390	79,560	171
	60	71.5	57,590	61,730	168
	70	67.9	46,100	49,550	164
	80	64.2	37,860	40,830	160
	90	60.4	32,020	34,620	154
	100	56.5	27,190	29,500	148
110	52.3	23,320	25,400	141	
120	47.9	20,150	22,040	132	
130	43.1	17,500	19,240	122	
140	37.9	15,260	16,860	110	
150	31.9	13,350	14,830	95	
160	24.6	11,670	13,060	76	
170	14.0	10,200	10,270 *	46	
180 feet	25	83.9	130,270 *	130,270 *	186
	30	82.3	124,030 *	124,030 *	186
	35	80.7	117,540 *	117,540 *	185
	40	79.1	102,610	109,470	184
	50	75.9	74,110	79,270	182
	60	72.6	57,290	61,430	179
	70	69.2	45,760	49,210	175
	80	65.8	37,500	40,470	171
	90	62.2	31,670	34,260	166
	100	58.5	26,820	29,130	160
	110	54.7	22,950	25,030	153
120	50.7	19,770	21,660	145	
130	46.4	17,120	18,860	136	
140	41.8	14,870	16,470	126	
150	36.7	12,950	14,440	113	
160	30.9	11,280	12,670	98	
170	23.9	9,820	11,120	78	
180	13.6	8,080 *	8,080 *	47	
190 feet	26	84.0	122,440 *	122,440 *	196
	30	82.8	117,610 *	117,610 *	196
	35	81.2	111,790 *	111,790 *	195
	40	79.7	102,310	105,040 *	194
	50	76.6	73,770	78,930	192
60	73.5	56,960	61,090	189	

## LIFT RATINGS IN POUNDS (continued)

With 77SH Hammerhead Boom, 29' Floating Mast,  
89,000 lb. Counterweight and 48,000 lb. Side Frame Counterweight

Boom Length (Feet)	Rad. Feet	Boom Angle Degrees	Counterweight Retracted Pounds	Counterweight Extended Pounds	From Boom Pt. to Ground Feet
190 feet (cont.)	70	70.3	45,410	48,860	186
	80	67.1	37,140	40,110	182
	90	63.8	31,320	33,920	177
	100	60.4	26,480	28,790	172
	110	56.8	22,600	24,680	165
	120	53.1	19,420	21,310	158
	130	49.2	16,770	18,500	150
	140	45.1	14,520	16,120	140
	150	40.6	12,600	14,090	129
	160	35.7	10,930	12,320	116
	170	30.1	9,460	10,760	100
	180	23.2	8,170	9,400	80
190	13.2	6,160 *	6,160 *	48	
200 feet	27	84.0	97,360 *	97,360 *	206
	30	83.1	97,020 *	97,020 *	206
	35	81.7	95,920 *	95,920 *	205
	40	80.2	93,050	93,050 *	204
	50	77.3	73,430	78,590	202
	60	74.4	56,640	60,780	200
	70	71.4	45,100	48,550	197
	80	68.3	36,830	39,800	193
	90	65.2	31,040	33,640	188
	100	62.0	26,200	28,510	183
	110	58.7	22,310	24,390	177
	120	55.3	19,140	21,030	171
130	51.7	16,490	18,220	163	
140	47.9	14,250	15,850	154	
150	43.9	12,320	13,810	144	
160	39.6	10,660	12,040	133	
170	34.8	9,200	10,500	119	
180	29.3	7,910	9,140	103	
190	22.6	6,770	7,930	82	
200	12.9	4,540 *	4,540 *	49	
210 feet	28	84.0	89,910 *	89,910 *	216
	30	83.4	89,470 *	89,470 *	216
	35	82.1	88,670 *	88,670 *	215
	40	80.7	87,740 *	87,740 *	215
	50	77.9	73,160	78,320	213

Boom Length (Feet)	Rad. Feet	Boom Angle Degrees	Counterweight Retracted Pounds	Counterweight Extended Pounds	From Boom Pt. to Ground Feet
210 feet (cont.)	60	75.1	56,340	60,480	210
	70	72.3	44,770	48,220	207
	80	69.4	36,480	39,450	203
	90	66.5	30,700	33,290	199
	100	63.4	25,840	28,150	194
	110	60.3	21,950	24,030	189
	120	57.2	18,760	20,650	183
	130	53.8	16,110	17,840	176
	140	50.3	13,860	15,460	168
	150	46.7	11,930	13,420	159
	160	42.8	10,260	11,650	148
	170	38.6	8,800	10,100	136
180	33.9	7,510	8,730	122	
190	28.5	6,360	7,520	106	
200	22.0	5,340	5,930 *	84	
210	12.5	2,800 *	2,800 *	50	
220 feet	30	83.7	82,340 *	82,340 *	226
	35	82.4	81,470 *	81,470 *	226
	40	81.1	80,550 *	80,550 *	225
	50	78.5	72,820	75,320 *	223
	60	75.8	56,010	60,140	220
	70	73.1	44,410	47,870	218
	80	70.4	36,600	39,080	214
	90	67.6	30,360	32,950	210
	100	64.7	25,490	27,800	206
	110	61.8	21,590	23,670	200
	120	58.8	18,400	20,290	195
	130	55.7	15,750	17,480	188
140	52.5	13,500	15,100	181	
150	49.1	11,570	13,050	172	
160	45.5	9,890	11,280	163	
170	41.7	8,420	9,730	152	
180	37.6	7,140	8,070 *	140	
190	33.1	6,000	6,010 *	125	
200	27.9	4,440 *	4,440 *	108	
210	21.5	2,840 *	2,820 *	86	
220	12.2	1,260 *	1,260 *	51	

Boom Length (Feet)	Rad. Feet	Boom Angle Degrees	Counterweight Retracted Pounds	Counterweight Extended Pounds	From Boom Pt. to Ground Feet
230 feet	31	83.8	75,660 *	75,660 *	236
	35	82.8	74,990 *	74,990 *	236
	40	81.5	74,070 *	74,070 *	235
	50	79.0	69,840 *	69,840 *	233
	60	76.4	55,700	59,840	231
	70	73.9	44,080	47,530	228
	80	71.3	36,260	38,730	225
	90	68.6	30,000	32,600	221
	100	65.9	25,130	27,440	217
	110	63.2	21,220	23,300	212
	120	60.3	18,030	19,920	206
	130	57.4	15,360	17,090	200
140	54.4	13,100	14,710	193	
150	51.2	11,160	12,650	185	
160	48.0	9,480	10,870	177	
170	44.5	8,020	8,320 *	167	
180	40.8	6,080 *	6,080 *	156	
190	36.8	4,380 *	4,380 *	143	
200	32.3	2,530 *	2,530 *	128	
210	27.2	1,050 *	1,050 *	110	
240 feet	32	83.8	69,710 *	69,710 *	246
	35	83.1	69,220 *	69,220 *	246
	40	81.9	68,130 *	68,130 *	245
	50	79.4	65,430 *	65,430 *	243
	60	77.0	55,350	59,010 *	241
	70	74.6	43,720	47,180	238
	80	72.1	35,920	38,350	235
	90	69.5	29,650	32,250	232
	100	67.0	24,770	27,080	228
	110	64.3	20,860	22,940	223
	120	61.7	17,650	19,550	218
	130	58.9	14,980	16,720	212
140	56.1	12,730	14,330	205	
150	53.1	10,780	11,970 *	198	
160	50.1	9,010 *	9,010 *	190	
170	46.9	6,780 *	6,780 *	181	
180	43.5	4,700 *	4,700 *	171	
190	39.9	2,640 *	2,640 *	159	
200	36.0	1,020 *	1,020 *	146	

## LIFT RATINGS IN POUNDS

With 77SH Offset Tip Boom, 29' Floating Mast,  
89,000 lb. Counterweight and 48,000 lb. Side Frame Counterweight

Boom Length (Feet)	Rad. Feet	Boom Angle Degrees	Counterweight Retracted Pounds	Counterweight Extended Pounds	From Boom Pt. to Ground Feet
80 feet	18	80.4	235,130 *	235,130 *	85
	20	79.0	235,130 *	235,130 *	85
	25	75.3	197,420 *	198,950 *	84
	30	71.6	161,730	165,780 *	82
	35	67.7	129,030	137,230	80
	40	63.8	107,090	113,940	78
	50	55.4	79,400	84,560	72
	60	46.0	62,600	66,740	63
90 feet	19	80.9	234,970 *	234,970 *	95
	20	80.2	234,970 *	234,970 *	95
	25	77.0	196,010 *	198,800 *	94
	30	73.7	161,450	165,660 *	93
	35	70.3	128,710	136,900	91
	40	66.9	106,750	113,600	89
	50	59.7	79,050	84,210	84
	60	51.9	62,220	66,360	77
100 feet	21	80.6	232,640 *	234,810 *	105
	25	78.3	195,050 *	198,660 *	104
	30	75.3	161,270	165,530 *	103
	35	72.4	128,500	136,700	102
	40	69.3	106,540	113,390	100
	50	63.0	78,820	83,980	95
	60	56.3	61,980	66,120	89
	70	49.0	50,850	54,310	82

Boom Length (Feet)	Rad. Feet	Boom Angle Degrees	Counterweight Retracted Pounds	Counterweight Extended Pounds	From Boom Pt. to Ground Feet
100 feet (cont.)	80	40.8	42,760	45,730	71
	90	30.8	36,690	39,280	57
	100	15.9	31,940	34,250	33
110 feet	22	81.0	219,970 *	225,560 *	115
	25	79.4	193,760 *	198,510 *	115
	30	76.7	160,950 *	165,410 *	114
	35	74.0	128,190	136,380	112
	40	71.3	106,200	113,060	111
	50	65.7	78,450	83,610	107
	60	59.7	61,580	65,720	101
	70	53.5	50,460	53,920	94
	80	46.6	42,360	45,320	86
	90	38.8	36,270	38,870	75
	100	29.3	31,540	33,850	60
	110	15.2	27,790	29,820	34
120 feet	24	80.8	200,390 *	206,470 *	125
	25	80.3	192,410 *	198,370 *	125
	30	77.8	160,060 *	165,280 *	124
	35	75.4	127,920	136,120	123
	40	72.9	105,930	112,790	121
	50	67.8	78,180	83,340	117
	60	62.5	61,280	65,420	113
	70	57.0	50,170	53,630	107
	80	51.0	42,070	45,030	99
	90	44.5	35,970	38,570	90
	100	37.1	31,240	33,540	78
	110	28.0	27,550	29,530	62
120	14.5	24,390	26,290	36	

Boom Length (Feet)	Rad. Feet	Boom Angle Degrees	Counterweight Retracted Pounds	Counterweight Extended Pounds	From Boom Pt. to Ground Feet
130 feet	26	80.6	183,230 *	190,540 *	135
	30	78.8	159,060 *	165,160 *	134
	35	76.5	127,800	136,000	133
	40	74.2	105,810	112,670	132
	50	69.6	78,050	83,210	128
	60	64.8	61,150	65,280	124
	70	59.8	50,050	53,510	119
	80	54.5	41,940	44,910	112
	90	48.8	35,850	38,450	104
	100	42.6	31,110	33,420	94
	110	35.5	27,460	29,400	81
	120	26.9	24,330	26,230	65
130	13.9	21,700	23,440	37	
140 feet	27	80.8	175,010 *	183,280 *	145
	30	79.6	157,750 *	165,040 *	144
	35	77.5	127,510	135,710	143
	40	75.4	105,490	112,350	142
	50	71.1	77,700	82,860	139
	60	66.7	60,750	64,890	135
	70	62.2	49,660	53,110	130
	80	57.4	41,540	44,500	124
	90	52.3	35,440	38,030	117
	100	46.9	30,680	32,990	108
	110	41.0	27,060	29,140	98
	120	34.2	23,930	25,820	84
130	25.9	21,310	23,040	67	
140	13.4	19,090	20,690	38	

# LIFT RATINGS IN POUNDS

With 77SH Offset Tip Boom, 29' Floating Mast,  
89,000 lb. Counterweight and 48,000 lb. Side Frame Counterweight

Boom Length (Feet)	Rad. Feet	Boom Angle Degrees	Counterweight Retracted Pounds	Counterweight Extended Pounds	From Boom Pt. to Ground Feet
150 feet	29	80.7	161,530 *	170,030 *	155
	30	80.3	156,100 *	164,910 *	154
	35	78.4	127,220	135,420	153
	40	76.4	105,200	112,050	152
	50	72.4	77,390	82,550	149
	60	68.3	60,430	64,570	146
	70	64.2	49,340	52,800	141
	80	59.8	41,210	44,170	136
	90	55.3	35,100	37,700	129
	100	50.4	30,340	32,650	122
	110	45.2	26,740	28,820	112
	120	39.5	23,610	25,500	101
	130	33.0	21,000	22,730	87
	140	25.0	18,780	20,390	69
	150	12.9	16,880	18,360	39
160 feet	30	80.9	154,050 *	162,670 *	165
	35	79.1	126,940	135,140	164
	40	77.3	104,890	111,750	163
	50	73.6	77,040	82,200	160
	60	69.8	60,040	64,180	157
	70	65.9	48,950	52,400	152
	80	61.9	40,800	43,760	147
	90	57.7	34,680	37,280	141
	100	53.3	29,900	32,210	134
	110	48.7	26,330	28,410	126
	120	43.7	23,190	25,080	116
	130	38.2	20,570	22,310	105
	140	31.9	18,360	19,960	90
	150	24.2	16,460	17,940	71
	160	12.5	14,800	15,860 *	40
170 feet	32	80.8	143,110 *	150,480 *	174
	35	79.7	126,630	134,830	174
	40	78.0	104,580	111,430	173
	50	74.6	76,710	81,880	170
	60	71.0	59,690	63,830	167
	70	67.4	48,610	52,070	163
	80	63.7	40,450	43,420	159
	90	59.8	34,320	36,920	153
	100	55.8	29,550	31,860	147
	110	51.6	25,990	28,070	139
	120	47.2	22,850	24,740	131
	130	42.3	20,230	21,960	120
	140	37.0	18,020	19,620	108
	150	30.9	16,120	17,600	93
	160	23.4	14,470	15,860	73
170	12.1	13,020	13,650 *	41	
180 feet	33	81.0	131,350 *	131,350 *	184
	35	80.3	126,360	130,760 *	184
	40	78.7	104,310	111,160	183
	50	75.4	76,460	81,620	181
	60	72.1	59,430	63,570	178
	70	68.7	48,370	51,830	174
	80	65.3	40,200	43,170	170
	90	61.7	34,070	36,670	165
	100	58.0	29,300	31,610	159
	110	54.1	25,770	27,850	152
	120	50.1	22,630	24,520	144
	130	45.8	20,010	21,740	135
	140	41.1	17,800	19,400	124
	150	35.9	15,900	17,380	111
	160	30.0	14,250	15,640	96
170	22.7	12,810	14,110	75	
180	11.7	11,540	11,850 *	42	
190 feet	35	80.8	120,270 *	120,270 *	194
	40	79.3	104,020	110,880	193
	50	76.2	76,130	81,290	191
	60	73.1	59,060	63,200	188
	70	69.9	47,990	51,450	185
	80	66.6	39,820	42,780	181
	90	63.3	33,670	36,270	176
	100	59.8	29,200	31,190	170
	110	56.3	25,370	27,450	164
	120	52.6	22,220	24,110	157
	130	48.6	19,600	21,340	149
	140	44.5	17,380	18,980	139
	150	39.9	15,480	16,960	128
	160	34.9	13,820	15,210	115
	170	29.2	12,390	13,690	98
180	22.1	11,120	12,340	77	
190	11.4	9,880 *	9,880 *	43	
200 feet	37	80.7	110,540 *	110,540 *	204
	40	79.8	103,700	109,860 *	203
	50	76.9	75,790	80,960	201
	60	73.9	58,710	62,850	199
	70	70.9	47,650	51,100	195
	80	67.9	39,460	42,430	192
	90	64.7	33,300	35,900	187
	100	61.5	28,860	30,820	182
	110	58.2	25,010	27,090	176
	120	54.7	21,860	23,750	169
	130	51.1	19,240	20,970	162
	140	47.3	17,020	18,620	153
	150	43.3	15,120	16,600	143
	160	38.9	13,460	14,850	131
	170	34.0	12,020	13,330	118
180	28.4	10,750	11,980	101	
190	21.5	9,630	10,790	79	
200	11.1	8,170 *	8,170 *	44	
210 feet	38	80.9	101,810 *	101,810 *	214
	40	80.3	101,250 *	101,250 *	214
	50	77.6	75,470	80,630	212
	60	74.7	58,340	62,470	209
	70	71.9	47,280	50,730	206
	80	69.0	39,060	42,030	202
	90	66.0	32,900	35,490	198
	100	63.0	28,470	30,410	193
	110	59.9	24,610	26,690	188
	120	56.7	21,450	23,350	182
	130	53.3	18,820	20,550	174
	140	49.8	16,600	18,200	166
	150	46.1	14,690	16,180	157
	160	42.2	13,030	14,420	147
	170	37.9	11,580	12,890	135
180	33.2	10,310	11,540	121	
190	27.7	9,190	10,350	103	
200	21.0	8,170	9,270	81	
210	10.8	6,440 *	6,440 *	45	
220 feet	40	80.8	92,360 *	92,360 *	224
	50	78.1	75,120	80,280	222
	60	75.4	57,970	62,110	219
	70	72.7	46,910	50,370	217
	80	70.0	38,700	41,660	213
	90	67.2	32,510	35,110	209
	100	64.3	28,100	30,020	205
	110	61.4	24,240	26,320	199
	120	58.3	21,090	22,980	193
	130	55.2	18,450	20,190	187
	140	52.0	16,220	17,820	179
	150	48.6	14,310	15,800	171
	160	45.0	12,660	14,050	161
	170	41.1	11,210	12,510	151
	180	37.0	9,940	11,170	138
190	32.4	8,810	9,970	124	
200	27.0	7,790	8,890	106	
210	20.5	6,890	7,930	83	
220	10.6	4,930 *	4,930 *	46	
230 feet	41	80.9	73,510 *	73,510 *	234
	50	78.7	71,770 *	71,770 *	232
	60	76.1	58,090	61,790	230
	70	73.5	46,610	50,070	227
	80	70.9	38,400	41,360	224
	90	68.2	32,220	34,810	220
	100	65.5	27,820	29,720	216
	110	62.7	23,960	26,040	211
	120	59.9	20,800	22,700	205
	130	56.9	18,180	19,910	199
	140	53.9	15,950	17,550	192
	150	50.8	14,040	15,530	184
	160	47.4	12,380	13,770	175
	170	43.9	10,930	12,230	165
	180	40.2	9,660	10,890	154
190	36.1	8,530	9,690	141	
200	31.6	7,520	8,610	126	
210	26.4	6,610	7,660	108	
220	20.0	5,800	6,510 *	84	
230	10.3	3,680 *	3,680 *	47	
240 feet	43	80.8	68,370 *	68,370 *	244
	50	79.1	66,740 *	66,740 *	242
	60	76.7	57,760	61,440	240
	70	74.2	46,250	49,710	237
	80	71.7	38,010	40,970	234
	90	69.2	31,820	34,420	231
	100	66.6	27,440	29,310	227
	110	64.0	23,570	25,650	222
	120	61.3	20,410	22,300	217
	130	58.5	17,770	19,500	211
	140	55.6	15,530	17,130	204
	150	52.7	13,620	15,110	197
	160	49.6	11,960	13,350	189
	170	46.4	10,510	11,810	180
	180	43.0	9,230	10,450	169
190	39.3	8,100	9,260	158	
200	35.3	7,080	8,180	145	
210	30.9	6,180	7,220	129	
220	25.9	5,350	6,350	110	
230	19.6	4,610	4,800 *	86	
240	10.1	2,240 *	2,240 *	48	
250 feet	44	81.0	63,430 *	63,430 *	254
	50	79.6	61,910 *	61,910 *	252
	60	77.2	57,420	59,450 *	250
	70	74.9	45,900	49,350	248
	80	72.5	37,640	40,610	245
	90	70.0	31,450	34,050	241
	100	67.6	27,080	28,930	237
	110	65.1	23,210	25,290	233
	120	62.5	20,040	21,930	228
	130	59.9	17,400	19,130	222
	140	57.2	15,160	16,760	216
	150	54.4	13,240	14,730	209
	160	51.5	11,580	12,970	202
	170	48.5	10,130	11,440	193
	180	45.4	8,860	10,080	184
190	42.0	7,720	8,880	173	
200	38.5	6,700	7,800	161	
210	34.6	5,790	6,830	148	
220	30.3	4,970	5,960	132	
230	25.3	4,230	5,170	113	
240	19.2	3,320 *	3,320 *	88	
260 feet	46	80.9	58,640 *	58,640 *	263
	50	80.0	57,700 *	57,700 *	263
	60	77.7	54,520 *	54,520 *	261
	70	75.5	45,540	48,990	258
	80	73.2	37,260	40,230	255
	90	70.8	31,050	33,650	252
	100	68.5	26,700	29,010	248
	110	66.1	22,810	24,890	244
	120	63.7	19,630	21,520	239
	130	61.2	16,980	18,720	234
	140	58.6	14,750	16,350	228
	150	56.0	12,830	14,310	222
	160	53.3	11,160	12,540	214
	170	50.5	9,700	11,010	207
	180	47.5	8,420	9,650	198
190	44.4	7,280	8,440	188	
200	41.2	6,260	7,360	177	
210	37.7	5,350	6,390	165	
220	33.9	4,520	5,520	151	
230	29.7	3,770	4,720	134	
240	24.8	3,100	3,540 *	115	
250	18.8	1,800 *	1,800 *	90	

# BOOM COMPOSITION CHART

## 77SH Hammerhead Boom

Boom Length (Meters)	Boom Length (Feet)	Boom Sections					
		9.1M 30' 77SA Inner	3.0M 10' 77S Center	6.1M 20' 77S Center	15.2M 50' 77S Center	5.9M 19.5' 77HL Outer	0M 0' Hammerhead
15.2 M	50	1	0	0	0	1	1
18.3 M	60	1	1	0	0	1	1
21.3 M	70	1	0	1	0	1	1
24.4 M	80	1	1	1	0	1	1
27.4 M	90	1	0	2	0	1	1
30.5 M	100	1	0	0	1	1	1
33.5 M	110	1	1	0	1	1	1
36.6 M	120	1	0	1	1	1	1
39.6 M	130	1	1	1	1	1	1
42.7 M	140	1	0	2	1	1	1
45.7 M	150	1	0	0	2	1	1
48.8 M	160	1	1	0	2	1	1
51.8 M	170	1	0	1	2	1	1
54.9 M	180	1	1	1	2	1	1
57.9 M	190	1	0	2	2	1	1
61.0 M	200	1	0	0	3	1	1
64.0 M	210	1	1	0	3	1	1
67.1 M	220	1	0	1	3	1	1
70.1 M	230	1	1	1	3	1	1
73.2 M	240	1	0	2	3	1	1

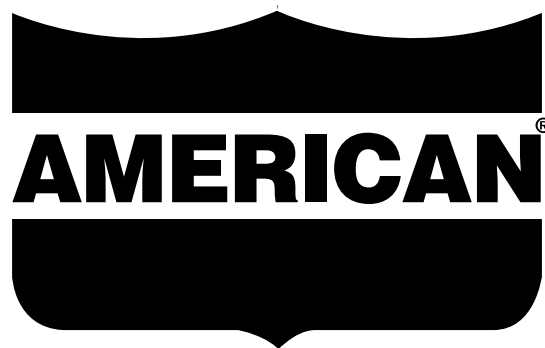
## 77SH Offset Tip

Boom Length (Meters)	Boom Length (Feet)	Boom Sections					
		9.1M 30' 77SA Inner	3.0M 10' 77S Center	6.1M 20' 77S Center	15.2M 50' 77S Center	5.9M 19.5' 77HL Outer	9.1M 30' 77LA Offset Tip
24.4 M	80	1	0	0	0	1	1
27.4 M	90	1	1	0	0	1	1
30.5 M	100	1	0	1	0	1	1
33.5 M	110	1	1	1	0	1	1
36.6 M	120	1	0	2	0	1	1
39.6 M	130	1	0	0	1	1	1
42.7 M	140	1	1	0	1	1	1
45.7 M	150	1	0	1	1	1	1
48.8 M	160	1	1	1	1	1	1
51.8 M	170	1	0	2	1	1	1
54.9 M	180	1	0	0	2	1	1
57.9 M	190	1	1	0	2	1	1
61.0 M	200	1	0	1	2	1	1
64.0 M	210	1	1	1	2	1	1
67.1 M	220	1	0	2	2	1	1
70.1 M	230	1	0	0	3	1	1
73.2 M	240	1	1	0	3	1	1
76.2 M	250	1	0	1	3	1	1
79.2 M	260	1	1	1	3	1	1

## GROUND PRESSURE

Lifting crane with 50' (15.2 mm) boom with Hammerhead Tip and standard counterweight

44' (1,117 M) shoes .....	9.80 psi
50' (1,270 M) shoes .....	8.60 psi



# HC 210 HYDRAULIC CRAWLER SPECIFICATIONS

---

## **⚠ WARNING**

**The ratings in this chart are for planning purposes only. Only those ratings specifically assigned to a crane and mounted in the Operator's Cab or in the Operator's Manual should be used for actual operation.**

**This rating chart is invalid if the crane has been modified or altered by use of other than GENUINE AMERICAN PARTS as such modifications or alterations may affect its capacity or safe operation. See American Crane Corporation Service Bulletin #259.**

Ratings in this chart are in POUNDS (Kgs) and do not exceed the percentage of tipping specified for this crane by ANSI B30.5. All ratings require that the crane be standing level on a firm uniformly supporting surface.

Do not lift loads in excess of those shown on this chart. Lifting loads in excess of those shown or operation not in accordance with good operating practice, including limitations shown on page 3499 of Operator's Manual, can cause tipping, structural damage or catastrophic failure.

Asterisk (\*) areas on this chart indicate ratings which are limited by strength of material or factors other than stability (tipping).

"RADIUS IN FEET" is the horizontal distance at ground level from the crane centerline of rotation to a vertical line through the center of gravity of the suspended load.

When using the main boom fall with jib in place, the main fall ratings must be reduced by the jib effective weight shown on the jib rating chart plus twice the weight of all suspended blocks, slings, rope, etc., at the jib fall.

When using the main boom fall with boom tip extension in place, the main fall ratings must be reduced by the weight of the boom tip extension plus twice the weight of all suspended blocks, slings, rope, etc., at the boom tip extension fall.

Blocks, slings, buckets and other load carrying devices are considered part of the load. The weight of standard hoisting ropes for the rating at a given radius has been calculated as part of the boom point load and need not be considered in determining net allowable loads.

This chart was developed exclusively for use with a boom only. Under no circumstances are these ratings to be interpreted for use with a jib.

Ratings shown on this chart make no allowance for such factors as out of plumb loads, wind, poor soil conditions, improper inflation of rubber tires and dynamic effects due to excessive operating speeds. The user (operator) must exercise judgement to make allowance for these conditions. See page 3499 of Operator's Manual for detailed information.

No account is taken of the wind force on the load. This effect, which can be substantial for loads with large surface areas, must be considered by the user. In any wind it is strongly recommended that taglines be used to control the load.

MAST HOIST LINE is 17 parts of .75 inch (19 mm) diameter 6 x 26, WS, FW, RAL, IWRC, EIPS wire rope with a minimum breaking strength of 58,800 pounds (26,672 Kg).

PENDANT SUSPENSION LINE is 2 parts of 1.375 inch (35 mm) diameter monolay wire rope with a minimum breaking strength of 208,000 pounds (94,349 Kg).

MAIN LOAD LINE is 1.125 inch (29 mm) diameter 6 x 25, RRL, IWRC, EIPS wire rope with a minimum breaking strength of 130,000 pounds (58,968 Kg).

Auxiliary Load Line is 1 inch (25mm) diameter 6x25, RRL, IWRC, EIPS wire rope with a minimum breaking strength of 103,400 pounds (46,901 kgs).

Erection "OVER THE END" is with the boom over the idler end with idler tumblers blocked (See Operator's Manual for blocking instructions). Erection "OVER THE SIDE" is with the boom 90° to the side frames and with the side frames extended. Blocks, slings and other load carrying devices must be on the ground during erection.

# LOAD HOISTING INFORMATION

## 77SH Hammerhead Boom

Max. Lifting Capacity (Lbs.)	Minimum Parts of Line	Max. Hoisting Distance - Feet	
		Main (Front)	Aux. (Rear)
420,000	12	110	110
400,000	11	120	120
371,060	10	130	130
334,260	9	150	150
297,120	8	170	170
259,980	7	190	190
222,840	6	220	220
185,700	5	270	270
148,560	4	340	340
111,420	3	450	450
74,280	2	680	680
37,140	1	1,360	1,360

Max. Lifting Capacity (Tonnes)	Minimum Parts of Line	Max. Hoisting Distance - Meters	
		Main (Front)	Aux. (Rear)
190.50	12	33.5 M	33.5 M
185.31	11	36.5 M	36.5 M
168.31	10	39.6 M	39.6 M
151.65	9	45.7 M	45.7 M
134.80	8	51.8 M	51.8 M
117.95	7	57.9 M	57.9 M
101.10	6	67.1 M	67.1 M
84.25	5	82.3 M	82.3 M
69.40	4	103.6 M	103.6 M
50.55	3	137.2 M	137.2 M
33.70	2	207.3 M	207.3 M
16.85	1	414.5 M	414.5 M

## 77SH Offset Tip

Max. Lifting Capacity (Lbs.)	Minimum Parts of Line	Max. Hoisting Distance - Feet	
		Main (Front)	Aux. (Rear)
235,130	7	190	190
222,840	6	220	220
185,700	5	270	270
148,560	4	340	340
111,420	3	450	450
74,280	2	680	680
37,140	1	1,360	1,360

Max. Lifting Capacity (Tonnes)	Minimum Parts of Line	Max. Hoisting Distance - Meters	
		Main (Front)	Aux. (Rear)
106.65	7	57.9 M	57.9 M
101.10	6	67.1 M	67.1 M
84.25	5	82.3 M	82.3 M
69.40	4	103.6 M	103.6 M
50.55	3	137.2 M	137.2 M
33.70	2	207.3 M	207.3 M
16.85	1	414.5 M	414.5 M

# MAXIMUM BOOM & JIB SELF ERECTION DATA

## 77SH Hammerhead Boom

	Over the End		Over the Side	
	Boom Length (Ft.)	Jib Length (Ft.)	Boom Length (Ft.)	Jib Length (Ft.)
#16HL JIB	240	0	210	40
	230	40	200	50
	220	60	190	70
	210	80	-	-

	Over the End		Over the Side	
	Boom Length (Meters)	Jib Length (Meters)	Boom Length (Meters)	Jib Length (Meters)
#16HL JIB	73.2	0	64.0	12.2
	70.1	12.2	61.0	15.2
	67.1	18.3	57.9	21.3
	64.0	24.4	-	-

## 77SH Offset Tip

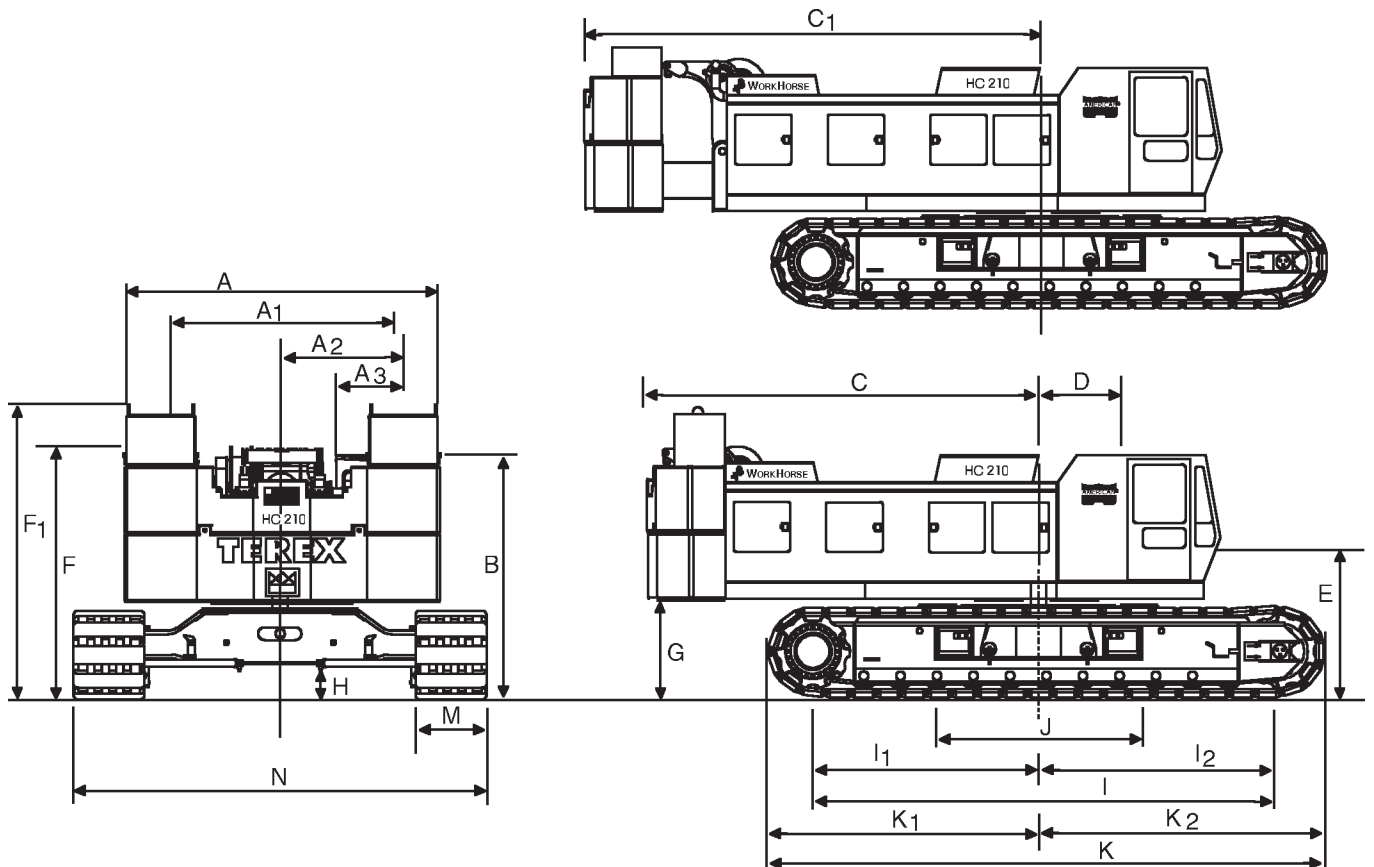
	Over the End		Over the Side	
	Boom Length (Ft.)	Jib Length (Ft.)	Boom Length (Ft.)	Jib Length (Ft.)
#16HL JIB	260	50	240	0
	250	80	230	50
	240	90	220	60
	-	-	210	80

	Over the End		Over the Side	
	Boom Length (Meters)	Jib Length (Meters)	Boom Length (Meters)	Jib Length (Meters)
#16HL JIB	79.2	15.2	73.2	12.2
	76.2	24.4	70.1	15.2
	73.2	27.4	67.1	18.3
	-	-	64.0	24.4

# WEIGHTS

	LBS.	KG.		LBS.	KG.
Lifting Crane with standard counterweight, 50' (15.2 m) boom with hammerhead tip, transport package, 3rd Drum and 44" (965 mm) shoes .....	315,080	142,958	Crane boom outerbase .....	2,890	1,085
Main Counterweight – Total .....	89,000	40,370	Crane boom inner, misc. & 3rd drum .....	8,015	3,636
Lower with 2-Removal Cylinders .....	35,000	15,880	Crawler Side Frames 44" (1,117 mm) shoes .....	76,160	34,545
Middle Overlay .....	35,000	15,880	Travel weight includes upper, carbody, transportation package, boom inner, counterweight handling sheaves and third drum .....	94,060	42,676
Upper Overlays (2) .....	19,000	8,618	Travel weight includes upper, carbody, but NO boom inner, transport package, 3rd drum .....	84,045	38,132
Crawler side frame counterweight (4) .....	48,000	21,775			
Crane boom outer hammerhead (six sheave) .....	4,970	2,255			

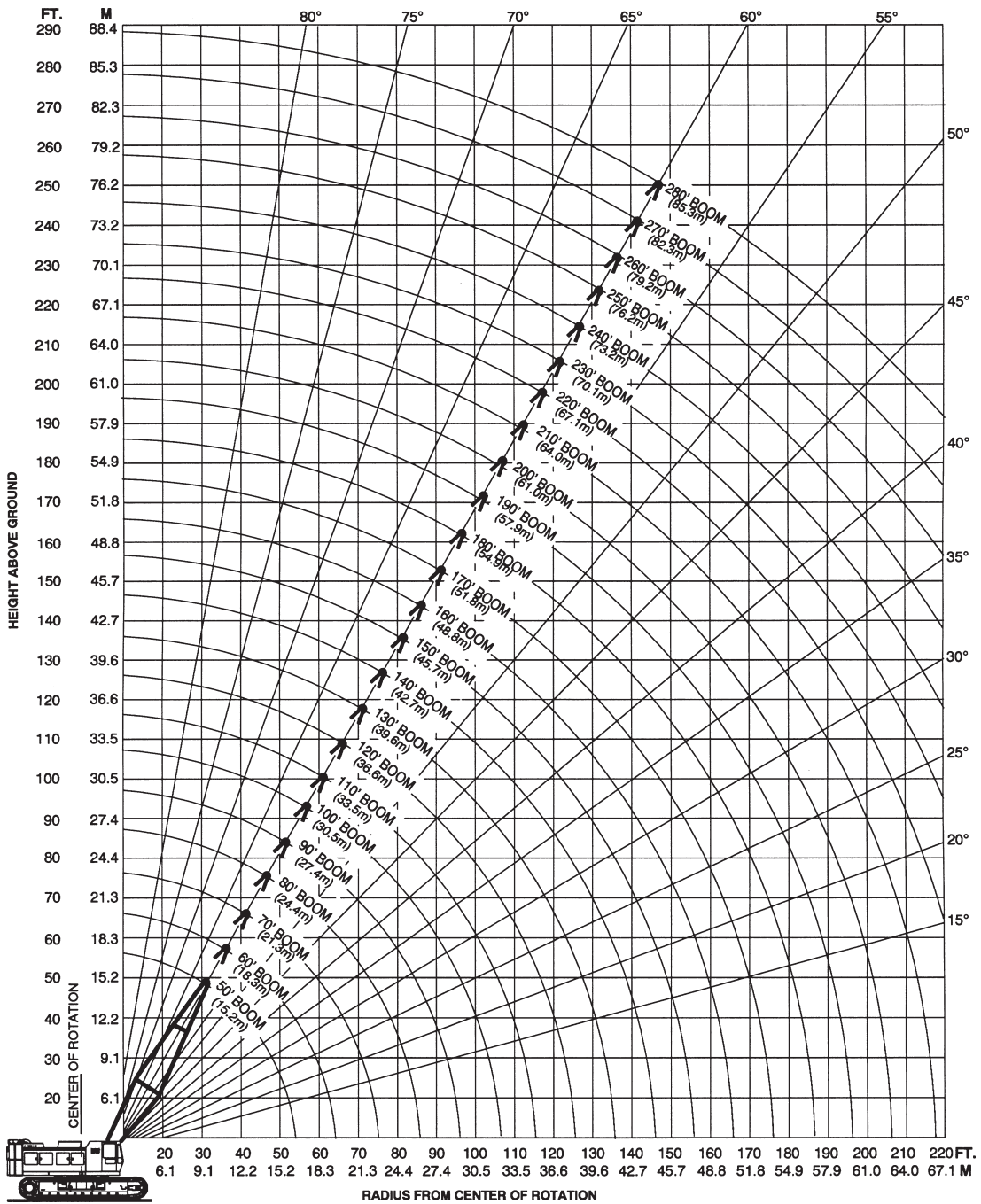
# HC 210 WORKHORSE GENERAL DIMENSIONS



	FEET	MM		FEET	MM		
A	Width of counterweight	16'-0"	4,267	I <sub>1</sub>	Center of drive tumbler to center of rotation	11' 9-1/4"	3,588
A <sub>1</sub>	Width of machinery cab	11'-5"	3,480	I <sub>2</sub>	Center of idler tumbler to center of rotation	12' 5-5/8"	3,800
A <sub>2</sub>	Centerline of machine to outside of operator's cab	6'-0"	1,829	J	Width of carbody (including vertical jacks)	10'-10"	3,300
A <sub>3</sub>	Width of operator's cab	3'-4"	1,016	K	Overall length of crawlers	28'-2"	8,585
B	Height over operator's cab	12'-0"	3,658	K <sub>1</sub>	Over drive tumbler to center of rotation	13' 7-7/8"	4,162
C	Tail swing w/WorkHorse retracted	19'-8"	5,867	K <sub>2</sub>	Over idler tumbler to center of rotation	14' 4-5/16"	4,377
C <sub>1</sub>	Tail swing w/WorkHorse extended	22'-8"	6,908	M	Width of tread shoe (standard)	44"	1,118
D	Center rotation to boom feet	3'-6"	1,066		(optional)	50"	1,270
E	Ground to center of boom foot	6'-8"	2,032	N	Overall width of crawlers		
F	Height over boom hoist	12' 7-9/16"	3,850		44" (1,118 mm) shoes extended	22'-4"	6,807
F <sub>1</sub>	Ground to top lifting	13' 4-1/4"	4,070		50" (1,270 mm) shoes extended	22'-10"	6,960
G	Ground to bottom of counterweight	4' 6-3/4"	1,391	N <sub>1</sub>	Length over crawler axles	19' 4-3/4"	5,963
I	Minimum ground clearance	1' 7-1/2"	495				
I	Center to center of crawler tumblers	24' 2-15/16"	7,389				

# AMERICAN MODEL HC 210 WORKING RANGES

## BOOM ANGLE DIAGRAM



For more information, product demonstration, or details on sales, lease and rental plans, please contact your local Terex American Crane Distributor.

We reserve the right to amend these specifications at any time without notice. The only warranty applicable is our standard written warranty applicable to the particular product and sale. We make no other warranty, expressed or implied.



AMERICAN CRANE CORPORATION  
 202 Raleigh Street • Wilmington, NC 28412 USA  
 (910) 395-8500 • FAX: (910) 395-8538