



# AMERICAN HC 210

## Hydraulic Crawler Crane



WORKHORSE

### LIFT RATINGS IN POUNDS

With 77LH Hammerhead Boom, 29' Floating Mast,  
89,000 lb. Counterweight and 48,000 lb. Side Frame Counterweight

Boom Length (Feet)	Rad. Feet	Boom Angle Degrees	Counterweight Retracted Pounds	Counterweight Extended Pounds	From Boom Pt. to Ground Feet
50 feet	12	83.1	420,000 *	420,000 *	57
	15	79.7	343,010 *	361,990 *	57
	20	73.9	255,670 *	269,960 *	55
	25	67.8	202,760 *	214,370 *	53
	30	61.5	159,660	169,860	50
	35	54.6	126,840	135,040	47
	40	47.1	104,770	111,540	43
	50	27.1	76,750	81,920	28
60 feet	13	83.3	393,330 *	415,100 *	67
	15	81.4	341,290 *	360,110 *	67
	20	76.6	254,840 *	269,080 *	66
	25	71.7	202,190 *	213,790 *	64
	30	66.5	159,740	169,940	62
	35	61.2	126,880	135,080	59
	40	55.5	104,800	111,550	56
	50	42.7	76,820	81,980	46
60	24.5	59,890	64,030	30	
70 feet	14	83.4	362,810 *	382,280 *	77
	15	82.6	338,810 *	357,540 *	77
	20	78.5	253,930 *	268,060 *	76
	25	74.3	201,630 *	213,210 *	75
	30	70.1	159,790	169,990	73
	35	65.6	126,900	135,100	70
	40	61.0	104,830	111,540	68
	50	51.1	76,830	81,990	61
60	39.3	59,990	64,130	50	
70	22.5	48,570	52,020	32	
80 feet	15	83.6	335,680 *	353,700 *	87
	20	80.0	252,610 *	266,620 *	86
	25	76.3	200,790 *	211,790 *	85
	30	72.6	159,710	169,910	83
	35	68.8	126,770	134,970	81
	40	64.9	104,670	111,370	79
	50	56.7	76,620	81,780	73
	60	47.5	59,800	63,940	65
70	36.6	48,410	51,870	53	
80	21.0	40,220	43,180	34	
90 feet	16	83.6	311,750 *	328,280 *	97
	20	81.1	250,990 *	264,790 *	96
	25	77.9	199,900 *	210,820 *	95
	30	74.6	159,590	169,790	94
	35	71.3	126,630	134,830	92
	40	67.9	104,520	111,190	90
	50	60.8	76,450	81,610	85
	60	53.2	59,640	63,780	78
70	44.6	48,260	51,710	69	
80	34.3	40,090	43,060	56	
90	19.7	33,980	36,580	35	
100 feet	17	83.7	253,030 *	252,820 *	107
	20	82.0	241,140 *	245,840 *	106
	25	79.1	192,800 *	203,590 *	106
	30	76.2	159,640 *	168,730 *	104
	35	73.2	126,890	135,090	103
	40	70.2	104,820	111,460	101
	50	64.0	76,750	81,910	97
	60	57.4	59,980	64,120	91
70	50.2	48,610	52,070	83	
80	42.2	40,470	43,440	73	
90	32.5	34,460	36,940	59	
100	18.6	29,610	31,920	37	
110 feet	18	83.7	242,510 *	242,110 *	117
	20	82.7	236,560 *	236,610 *	117
	25	80.1	191,510 *	202,120 *	116

Boom Length (Feet)	Rad. Feet	Boom Angle Degrees	Counterweight Retracted Pounds	Counterweight Extended Pounds	From Boom Pt. to Ground Feet
110 feet (cont.)	30	77.4	158,800 *	167,810 *	115
	35	74.8	126,760	134,960	113
	40	72.1	104,650	111,270	112
	50	66.5	76,510	81,670	108
	60	60.7	59,730	63,870	102
	70	54.5	48,340	51,800	96
	80	47.7	40,180	43,150	87
	90	40.1	34,210	36,800	76
	100	30.9	29,390	31,700	62
	110	17.7	25,500	27,580	38
	120 feet	19	83.8	230,070 *	230,370 *
20		83.3	226,230 *	226,260 *	127
25		80.9	189,900 *	200,240 *	126
30		78.5	157,850 *	166,760 *	125
35		76.1	126,560	134,760	124
40		73.6	104,460	111,050	122
50		68.6	76,270	81,430	119
60		63.3	59,500	63,640	114
70		57.8	48,100	51,560	108
80		51.9	39,330	42,890	101
90		45.5	33,980	36,580	91
100		38.3	29,180	31,490	80
110	29.5	25,320	27,400	64	
120	16.9	22,120	24,020	40	
130 feet	20	83.8	215,170 *	215,000 *	137
	25	81.6	187,710 *	198,180 *	136
	30	79.4	156,710 *	165,490 *	135
	35	77.2	126,400	134,600	134
	40	74.9	104,260	110,830	133
	50	70.3	76,010	81,170	129
	60	65.5	59,220	63,360	125
	70	60.6	47,790	51,240	120
	80	55.3	39,600	42,570	113
	90	49.7	33,670	36,270	105
	100	43.6	28,870	31,180	95
	110	36.7	25,000	27,080	83
	120	28.3	21,830	23,720	67
130	16.2	19,150	20,890	41	
140 feet	21	83.8	201,420 *	201,560 *	147
	25	82.2	184,840 *	189,440 *	146
	30	80.2	155,290 *	163,900 *	145
	35	78.1	126,170	134,370	144
	40	76.0	104,010	110,560	143
	50	71.7	75,720	80,880	140
	60	67.4	58,940	63,080	136
	70	62.8	47,500	50,950	131
	80	58.1	39,300	42,270	125
	90	53.2	33,390	35,990	118
	100	47.8	28,580	30,890	110
	110	41.9	24,730	26,810	99
	120	35.3	21,560	23,450	86
	130	27.2	18,910	20,650	69
140	15.5	16,650	18,250	42	
150 feet	22	83.9	159,150 *	159,250 *	157
	25	82.7	154,910 *	154,910 *	156
	30	80.8	147,820 *	147,500 *	155
	35	78.9	126,060	134,260	155
	40	76.9	103,960	110,470	153
	50	73.0	75,690	80,850	150
	60	68.9	58,940	63,080	147
	70	64.8	47,510	50,970	142
	80	60.5	39,320	42,290	137
	90	56.0	33,450	36,050	131
100	51.2	28,650	30,960	123	

Boom Length (Feet)	Rad. Feet	Boom Angle Degrees	Counterweight Retracted Pounds	Counterweight Extended Pounds	From Boom Pt. to Ground Feet
150 feet (cont.)	110	46.1	24,800	26,880	114
	120	40.4	21,650	23,540	103
	130	34.0	19,010	20,750	89
	140	26.3	16,770	18,370	71
	150	15.0	14,850	16,330	43
	160 feet	23	83.9	150,060 *	150,060 *
25		83.2	146,980 *	146,980 *	166
30		81.4	139,310 *	139,310 *	166
35		79.6	125,950	132,400 *	165
40		77.8	103,800	110,300	164
50		74.1	75,460	80,620	161
60		70.3	58,690	62,820	158
70		66.5	47,230	50,680	153
80		62.5	39,020	41,990	148
90		58.4	33,160	35,760	143
100		54.0	28,350	30,660	136
110		49.5	24,490	26,570	128
120		44.5	21,330	23,220	118
130		39.1	18,690	20,430	106
140		32.9	16,450	18,050	92
150		25.4	14,540	16,020	74
160	14.5	12,850	13,810 *	45	
170 feet	24	83.9	140,270 *	140,270 *	177
	27	82.9	138,900 *	138,900 *	176
	30	81.9	132,280 *	132,280 *	176
	35	80.2	125,620 *	125,510 *	175
	40	78.5	103,560	110,030	174
	50	75.0	75,180	80,340	171
	60	71.5	58,410	62,550	168
	70	67.9	46,940	50,390	164
	80	64.2	38,720	41,680	160
	90	60.4	32,890	35,480	154
	100	56.5	28,060	30,370	148
	110	52.3	24,200	26,280	141
	120	47.9	21,040	22,930	132
	130	43.1	18,400	20,130	122
	140	37.9	16,160	17,760	110
	150	31.9	14,250	15,740	95
	160	24.6	12,580	13,970	76
170	14.0	11,110	11,580 *	46	
180 feet	25	83.9	131,210 *	131,210 *	187
	30	82.3	125,080 *	125,080 *	186
	35	80.7	118,740 *	118,740 *	185
	40	79.1	103,390	109,840	184
	50	75.9	74,930	80,100	182
	60	72.6	58,150	62,290	179
	70	69.2	46,640	50,090	175
	80	65.8	38,400	41,360	171
	90	62.2	32,570	35,170	166
	100	58.5	27,740	30,050	160
	110	54.7	23,870	25,950	153
	120	50.7	20,700	22,590	145
	130	46.4	18,050	19,790	136
	140	41.8	15,810	17,410	126
150	36.7	13,890	15,380	113	
160	30.9	12,230	13,620	98	
170	23.9	10,770	12,070	78	
180	13.6	9,440 *	9,440 *	47	
190 feet	26	84.0	123,340 *	123,340 *	196
	30	82.8	118,650 *	118,650 *	196
	35	81.2	112,950 *	112,950 *	195
	40	79.7	103,130	106,340 *	194
	50	76.6	74,460	79,800	192
	60	73.5	57,850	61,990	189

## LIFT RATINGS IN POUNDS (continued)

With 77LH Hammerhead Boom, 29' Floating Mast,  
89,000 lb. Counterweight and 48,000 lb. Side Frame Counterweight

Boom Length (Feet)	Rad. Feet	Boom Angle Degrees	Counterweight Retracted Pounds	Counterweight Extended Pounds	From Boom Pt. to Ground Feet	
190 feet (cont.)	70	70.3	46,320	49,780	186	
	80	67.1	38,070	41,040	182	
	90	63.8	32,260	34,860	177	
	100	60.4	27,430	29,740	172	
	110	56.8	23,550	25,630	165	
	120	53.1	20,380	22,270	158	
	130	49.2	17,730	19,470	150	
	140	45.1	15,490	17,090	140	
	150	40.6	13,570	15,060	129	
	160	35.7	11,910	13,300	116	
170	30.1	10,440	11,740	100		
180	23.2	9,160	10,380	80		
190	13.2	7,560 *	7,560 *	48		
200 feet	27	84.0	98,040 *	98,040 *	206	
	30	83.1	97,360 *	97,360 *	206	
	35	81.7	96,620 *	96,620 *	205	
	40	80.2	94,590 *	94,590 *	204	
	50	77.3	74,450	79,610	202	
	60	74.4	57,710	61,850	200	
	70	71.4	46,200	49,650	197	
	80	68.3	37,960	40,920	193	
	90	65.2	32,180	34,780	188	
	100	62.0	27,350	29,660	183	
110	58.7	23,480	25,560	177		
120	55.3	20,310	22,200	171		
130	51.7	17,670	19,410	163		
140	47.9	15,440	17,040	154		
150	43.9	13,520	15,000	144		
160	39.6	11,860	13,250	133		
170	34.8	10,400	11,700	119		
180	29.3	9,120	10,350	103		
190	22.6	7,990	9,140	82		
200	12.9	6,290 *	6,290 *	49		
210 feet	28	84.0	90,630 *	90,630 *	216	
	30	83.4	90,200 *	90,200 *	216	
	35	82.1	89,420 *	89,420 *	215	
	40	80.7	88,720 *	88,720 *	215	
	50	77.9	74,230	79,390	213	
	60	75.1	57,470	61,610	210	
	70	72.3	45,920	49,380	207	
	210 feet (cont.)	80	69.4	37,660	40,630	203
		90	66.5	31,890	34,490	199
		100	63.4	27,050	29,360	194
110		60.3	23,180	25,260	189	
120		57.2	19,990	21,890	183	
130		53.8	17,350	19,080	176	
140		50.3	15,110	16,710	168	
150		46.7	13,490	14,670	159	
160		42.8	11,510	12,900	148	
170		38.6	10,060	11,360	136	
180	33.9	8,770	10,000	122		
190	28.5	7,630	8,790	106		
200	22.0	6,610	7,710	84		
210	12.5	4,630 *	4,630 *	50		
220 feet	33	83.0	83,100 *	83,100 *	226	
	35	82.4	82,250 *	82,250 *	226	
	40	81.1	81,350 *	81,350 *	225	
	50	78.5	73,950	76,970 *	223	
	60	75.8	57,180	61,320	220	
	70	73.1	45,620	49,080	218	
	80	70.4	37,350	40,320	214	
	90	67.6	31,610	34,200	210	
	100	64.7	26,760	29,060	206	
	110	61.8	22,870	24,950	200	
120	58.8	19,680	21,580	195		
130	55.7	17,040	18,770	188		
140	52.5	14,790	16,400	181		
150	49.1	12,870	14,360	172		
160	45.5	11,200	12,590	163		
170	41.7	9,740	11,040	152		
180	37.6	8,450	9,680	140		
190	33.1	7,320	8,480	125		
200	27.9	6,300	7,400	108		
210	21.5	5,380	6,010 *	86		
220	12.2	3,150 *	3,150 *	51		
230 feet	31	83.8	76,480 *	76,480 *	236	
	35	82.8	75,820 *	75,820 *	236	
	40	81.5	74,920 *	74,920 *	235	
	50	79.0	71,570 *	71,570 *	233	
	60	76.4	56,930	61,060	231	
	230 feet (cont.)	70	73.9	45,330	48,790	228
		80	71.3	37,040	40,010	225
		90	68.6	31,300	33,900	221
		100	65.9	26,440	28,750	217
		110	63.2	22,540	24,620	212
120		60.3	19,360	21,250	206	
130		57.4	16,690	18,430	200	
140		54.4	14,450	16,050	193	
150		51.2	12,510	14,000	185	
160		48.0	10,840	12,230	177	
170	44.5	9,380	10,680	167		
180	40.8	8,090	9,310	156		
190	36.8	6,940	7,640 *	143		
200	32.3	5,930	6,020 *	128		
210	27.2	4,460 *	4,460 *	110		
220	21.0	3,000 *	3,000 *	87		
230	11.9	1,670 *	1,670 *	52		
240 feet	32	83.8	70,550 *	70,550 *	246	
	35	82.8	70,070 *	70,070 *	246	
	40	81.9	68,970 *	68,970 *	245	
	50	79.4	66,230 *	66,230 *	243	
	60	77.0	56,620	60,760	241	
	70	74.6	45,020	48,480	238	
	80	72.1	36,710	39,680	235	
	90	69.5	30,990	33,590	232	
	100	67.0	26,120	28,430	228	
	110	64.3	22,220	24,300	223	
120	61.7	19,030	20,920	218		
130	58.9	16,360	18,100	212		
140	56.1	14,110	15,710	205		
150	53.1	12,170	13,660	198		
160	50.1	10,500	11,890	190		
170	46.9	9,040	10,330 *	181		
180	43.5	7,750	7,960 *	171		
190	39.9	6,170 *	6,170 *	159		
200	36.0	4,470 *	4,470 *	146		
210	31.6	2,930 *	2,930 *	131		
220	26.6	1,570 *	1,570 *	113		

## LIFT RATINGS IN POUNDS

With 77LH Offset Tip Boom, 29' Floating Mast,  
89,000 lb. Counterweight and 48,000 lb. Side Frame Counterweight

Boom Length (Feet)	Rad. Feet	Boom Angle Degrees	Counterweight Retracted Pounds	Counterweight Extended Pounds	From Boom Pt. to Ground Feet	
80 feet	18	80.4	235,130 *	235,130 *	85	
	20	79.0	235,130 *	235,130 *	85	
	25	75.3	197,420 *	198,950 *	84	
	30	71.6	161,730	165,780 *	82	
	35	67.7	129,030	137,230	80	
	40	63.8	107,090	113,940	78	
	50	55.4	79,400	84,560	72	
	60	46.0	62,600	66,740	63	
	70	34.7	51,430	54,890	51	
	80	17.9	43,320	46,290	30	
90 feet	19	80.9	234,970 *	234,970 *	95	
	20	80.2	234,970 *	234,970 *	95	
	25	77.0	196,010 *	198,800 *	94	
	30	73.7	161,450	165,660 *	93	
	35	70.3	128,710	136,900	91	
	40	66.9	106,750	113,600	89	
	50	59.7	79,050	84,210	84	
	60	51.9	62,220	66,360	77	
	70	43.2	51,070	54,530	67	
	80	32.6	42,990	45,960	54	
90	16.9	36,900	39,490	32		
100 feet	21	80.6	232,640 *	234,810 *	105	
	25	78.3	195,050 *	198,660 *	104	
	30	75.3	161,270	165,530 *	103	
	35	72.4	128,500	136,700	102	
	40	69.3	106,540	113,390	100	
	50	63.0	78,820	83,980	95	
	60	56.3	61,980	66,120	89	
	100 feet (cont.)	70	49.0	50,850	54,310	82
		80	40.8	42,760	45,730	71
		90	30.8	36,690	39,280	57
100		15.9	31,940	34,250	33	
110 feet		22	81.0	219,970 *	225,560 *	115
		25	79.4	193,760 *	198,510 *	115
		30	76.7	160,950 *	165,410 *	114
		35	74.0	128,190	136,380	112
		40	71.3	106,200	113,060	111
		50	65.7	78,450	83,610	107
	60	59.7	61,580	65,720	101	
	70	53.5	50,460	53,920	94	
	80	46.6	42,360	45,320	86	
	90	38.8	36,270	38,870	75	
100	29.3	31,450	33,850	60		
110	15.2	27,790	29,820	34		
120 feet	24	80.8	200,390 *	206,470 *	125	
	25	80.3	192,410 *	198,370 *	125	
	30	77.8	160,060 *	165,280 *	124	
	35	75.4	127,920	136,120	123	
	40	72.9	105,930	112,790	121	
	50	67.8	78,180	83,340	117	
	60	62.5	61,280	65,420	113	
	70	57.0	50,170	53,630	107	
	80	51.0	42,070	45,030	99	
	90	44.5	35,970	38,570	90	
100	37.1	31,240	33,540	78		
120 feet (cont.)	110	28.0	27,550	29,530	62	
	120	14.5	24,390	26,290	36	
	130 feet	26	80.6	183,690 *	190,540 *	135
		30	78.8	159,530 *	165,160 *	134
		35	76.5	128,010	136,210	133
		40	74.2	106,050	112,900	132
		50	69.6	78,310	83,470	128
		60	64.8	61,420	65,560	124
		70	59.8	50,340	53,790	119
		80	54.5	42,240	45,200	112
90		48.8	36,150	38,750	104	
100		42.6	31,420	33,730	94	
110	35.5	27,770	29,710	81		
120	26.9	24,650	26,540	65		
130	13.9	22,020	23,750	37		
140 feet	27	80.8	175,500 *	183,280 *	145	
	30	79.6	158,250 *	165,040 *	144	
	35	77.5	127,770	135,960	143	
	40	75.4	105,760	112,620	142	
	50	71.1	78,000	83,160	139	
	60	66.7	61,070	65,210	135	
	70	62.2	49,980	53,440	130	
	80	57.4	41,870	44,840	124	
	90	52.3	35,770	38,370	117	
	100	46.9	31,020	33,330	108	
110	41.0	27,400	29,300	98		
120	34.2	24,280	26,170	84		

# LIFT RATINGS IN POUNDS (continued)

With 77LH Offset Tip Boom, 29' Floating Mast,  
89,000 lb. Counterweight and 48,000 lb. Side Frame Counterweight

Boom Length (Feet)	Rad. Feet	Boom Angle Degrees	Counterweight Retracted Pounds	Counterweight Extended Pounds	From Boom Pt. to Ground Feet	
140 (cont.)	130	25.9	21,660	23,390	67	
	140	13.4	19,440	21,040	38	
150 feet	29	80.7	162,040 *	170,660 *	155	
	30	80.3	156,650 *	164,910 *	154	
	35	78.4	127,510	135,710	153	
	40	76.4	105,510	112,360	152	
	50	72.4	77,720	82,880	149	
	60	68.3	60,780	64,920	146	
	70	64.2	49,700	53,150	141	
	80	59.8	41,570	44,530	136	
	90	55.3	35,470	38,060	129	
	100	50.4	30,710	33,020	122	
	110	45.2	27,120	29,200	112	
	120	39.5	23,980	25,880	101	
	130	33.0	21,380	23,110	87	
	140	25.0	19,170	20,770	69	
	150	12.9	17,260	18,750	39	
160 feet	30	80.9	154,970 *	163,130 *	165	
	35	79.1	127,260	135,450	164	
	40	77.3	105,230	112,080	163	
	50	73.6	77,400	82,560	160	
	60	69.8	60,410	64,550	157	
	70	65.9	49,330	52,780	152	
	80	61.9	41,180	44,150	147	
	90	57.7	35,070	37,670	141	
	100	53.3	30,300	32,610	134	
	110	48.7	26,730	28,810	126	
	120	43.7	23,600	25,490	116	
	130	38.2	20,980	22,710	105	
	140	31.9	18,760	20,370	90	
	150	24.2	16,870	18,350	71	
	160	12.5	15,210	16,460 *	40	
	170 feet	32	80.8	143,690 *	151,040 *	174
35		79.7	126,980	135,180	174	
40		78.0	104,940	111,790	173	
50		74.6	77,100	82,260	170	
60		71.0	60,090	64,230	167	
70		67.4	49,020	52,470	163	
80		63.7	40,860	43,830	159	
90		59.8	34,740	37,330	153	
100		55.8	29,970	32,280	147	
110		51.6	26,420	28,500	139	
120		47.2	23,270	25,160	131	
130		42.3	20,660	22,390	120	
140		37.0	18,450	20,050	108	
150		30.9	16,550	18,040	93	
160		23.4	14,900	16,290	73	
170		12.1	13,450	14,280 *	41	
180 feet		33	81.0	131,690 *	131,690 *	184
	35	80.3	126,830	131,090 *	184	
	40	78.7	104,820	111,670	183	
	50	75.4	77,020	82,180	181	
	60	72.1	60,020	64,160	178	
	70	68.7	48,990	52,440	174	
	80	65.3	40,830	43,790	170	
	90	61.7	34,710	37,300	165	
	100	58.0	29,950	32,260	159	
	110	54.1	26,420	28,500	152	
	120	50.1	23,290	25,180	144	
	130	45.8	20,670	22,410	135	
	140	41.1	18,470	20,070	124	
	150	35.9	16,570	18,060	111	
	160	30.0	14,930	16,320	96	
	170	22.7	13,490	14,790	75	
	180	11.7	12,230	12,850 *	42	
	190 feet	35	80.8	120,630 *	120,360 *	194
40		79.3	104,590	111,440	193	
50		76.2	76,740	81,900	191	
60		73.1	59,710	63,850	188	
70		69.9	48,660	52,110	185	
80		66.6	40,490	43,460	181	
90		63.3	34,360	36,950	176	
100		59.8	29,580	31,890	170	
110		56.3	26,070	28,150	164	
120		52.6	22,930	24,820	157	
130		48.6	20,310	22,050	149	
140		44.5	18,100	19,700	139	
150		39.9	16,200	17,690	128	
160		34.9	14,550	15,940	115	
170		29.2	13,120	14,420	98	
180		22.1	11,850	13,070	77	
190		11.4	10,720	10,940 *	43	
200 feet		37	80.7	110,940 *	110,940 *	204
		40	79.8	104,320	110,270 *	203
	50	76.9	76,450	81,620	201	
	60	73.9	59,400	63,540	199	
	70	70.9	48,360	51,810	195	
	80	67.9	40,180	43,150	192	
	90	64.7	34,030	36,630	187	
	100	61.5	29,250	31,560	182	
	110	58.2	25,760	27,840	176	
	120	54.7	22,610	24,510	169	
	130	51.1	20,000	21,730	162	
	140	47.3	17,780	19,380	153	
	150	43.3	15,880	17,370	143	
	160	38.9	14,230	15,620	131	
	170	34.0	12,790	14,100	118	
	180	28.4	11,520	12,750	101	
190	21.5	10,400	11,560	79		
200	11.1	9,280 *	9,280 *	44		
210 feet	38	80.9	102,250 *	102,250 *	214	
	40	80.3	101,690 *	101,690 *	214	
	50	77.6	76,170	81,330	212	
	60	74.7	59,070	63,210	209	
	70	71.9	48,030	51,480	206	
	80	69.0	39,830	42,790	202	
	90	66.0	33,670	36,270	198	
	100	63.0	28,880	31,190	193	
	110	59.9	25,400	27,480	188	
	120	56.7	22,250	24,140	182	
	130	53.3	19,620	21,350	174	
	140	49.8	17,400	19,000	166	
	150	46.1	15,490	16,980	157	
	160	42.2	13,840	15,230	147	
	170	37.9	12,390	13,700	135	
	180	33.2	11,120	12,350	121	
	190	27.7	10,000	11,160	103	
200	21.0	8,990	10,090	81		
210	10.8	7,610 *	7,610 *	45		
220 feet	40	80.8	92,840 *	92,840 *	224	
	50	78.1	75,860	81,020	222	
	60	75.4	58,740	62,880	219	
	70	72.7	47,700	51,150	217	
	80	70.0	39,500	42,460	213	
	90	67.2	33,330	35,920	209	
	100	64.3	28,920	30,840	205	
	110	61.4	25,070	27,150	199	
	120	58.3	21,920	23,810	193	
	130	55.2	19,290	21,020	187	
	140	52.0	17,060	18,660	179	
	150	48.6	15,150	16,640	171	
	160	45.0	13,500	14,890	161	
	170	41.1	12,060	13,360	151	
	180	37.0	10,790	12,010	138	
	190	32.4	9,660	10,820	124	
	200	27.0	8,650	9,740	106	
	210	20.5	7,750	8,790	83	
220	10.6	6,150 *	6,150 *	46		
230 feet	41	80.9	74,060 *	74,060 *	234	
	50	78.7	72,310 *	72,310 *	232	
	60	76.1	58,570	62,710	230	
	70	73.5	47,560	51,010	227	
	80	70.9	39,370	42,330	224	
	90	68.2	33,200	35,800	220	
	100	65.5	28,820	30,720	216	
	110	62.7	24,970	27,050	211	
	120	59.9	21,820	23,710	205	
	130	56.9	19,200	20,940	199	
	140	53.9	16,980	18,580	192	
	150	50.8	15,080	16,570	184	
	160	47.4	13,420	14,810	175	
	170	43.9	11,980	13,280	165	
	180	40.2	10,710	11,940	154	
	190	36.1	9,580	10,740	141	
	200	31.6	8,570	9,670	126	
	210	26.4	7,670	8,720	108	
	220	20.0	6,860	7,860	84	
230	10.3	5,210 *	5,210 *	47		
240 feet	43	80.8	68,970 *	68,970 *	244	
	50	79.1	67,320 *	67,320 *	242	
	60	76.7	58,280	62,420	240	
	70	74.2	47,260	50,720	237	
	80	71.7	39,040	42,000	234	
	90	69.2	32,870	35,470	231	
	240 feet (cont.)	100	66.6	28,500	30,370	227
		110	64.0	24,640	26,720	222
		120	61.3	21,480	23,380	217
130		58.5	18,850	20,580	211	
140		55.6	16,620	18,220	204	
150		52.7	14,710	16,200	197	
160		49.6	13,060	14,450	189	
170		46.4	11,610	12,910	180	
180		43.0	10,330	11,560	169	
190		39.3	9,210	10,370	158	
200		35.3	8,190	9,290	145	
210		30.9	7,290	8,340	129	
220		25.9	6,470	7,460	110	
230		19.6	5,730	6,410 *	86	
240		10.1	3,840 *	3,840 *	48	
250 feet		44	81.0	64,070 *	64,070 *	254
	50	79.6	62,530 *	62,530 *	252	
	60	77.2	57,970	60,050 *	250	
	70	74.9	46,960	50,410	248	
	80	72.5	38,730	41,690	245	
	90	70.0	32,550	35,150	241	
	100	67.6	28,190	30,040	237	
	110	65.1	24,330	26,410	233	
	120	62.5	21,170	23,060	228	
	130	59.9	18,530	20,270	222	
	140	57.2	16,300	17,900	216	
	150	54.4	14,390	15,870	209	
	160	51.5	12,730	14,120	202	
	170	48.5	11,290	12,590	193	
	180	45.4	10,010	11,240	184	
	190	42.0	8,880	10,040	173	
200	38.5	7,860	8,960	161		
210	34.6	6,960	8,000	148		
220	30.3	6,140	7,130	132		
230	25.3	5,400	6,350	113		
240	19.2	4,730	5,000 *	88		
260 feet	46	80.9	59,160 *	59,160 *	263	
	50	80.0	58,210 *	58,210 *	263	
	60	77.7	55,000 *	55,000 *	261	
	70	75.5	46,650	50,100	258	
	80	73.2	3			

## LIFT RATINGS IN POUNDS (continued)

With 77LH Offset Tip Boom, 29' Floating Mast,  
89,000 lb. Counterweight and 48,000 lb. Side Frame Counterweight

Boom Length (Feet)	Rad. Feet	Boom Angle Degrees	Counterweight Retracted Pounds	Counterweight Extended Pounds	From Boom Pt. to Ground Feet	Boom Length (Feet)	Rad. Feet	Boom Angle Degrees	Counterweight Retracted Pounds	Counterweight Extended Pounds	From Boom Pt. to Ground Feet	Boom Length (Feet)	Rad. Feet	Boom Angle Degrees	Counterweight Retracted Pounds	Counterweight Extended Pounds	From Boom Pt. to Ground Feet
280 feet	49	80.9	44,110 *	44,110 *	283	280 feet (cont.)	120	65.7	20,330	22,220	261	280 feet (cont.)	200	45.7	6,990	8,090	206
	50	80.7	44,110 *	44,110 *	283		130	63.4	17,690	19,420	257		210	42.7	6,080	7,120	196
	60	78.6	41,640 *	41,640 *	281		140	61.1	15,450	17,050	251		220	39.6	5,250	6,250	184
	70	76.5	39,640 *	39,640 *	279		150	58.7	13,530	15,020	245		230	36.3	4,510	5,460	171
	80	74.4	37,750 *	37,750 *	276		160	56.3	11,870	13,260	239		240	32.6	3,830	4,740	157
	90	72.3	31,670	34,270	273		170	53.8	10,420	11,730	232		250	28.6	3,210	3,640 *	140
	100	70.1	27,370	29,160	270		180	51.2	9,140	10,370	224		260	23.9	2,660	2,780 *	119
	110	67.9	23,500	25,580	266		190	48.5	8,010	9,160	216		270	18.1	1,420 *	1,420 *	93

## BOOM COMPOSITION CHART

### 77LH Hammerhead Boom

Boom Length (Meters)	Boom Length (Feet)	Boom Sections					
		9.1M 30' 77SA Inner	3.0M 10' 77S Center	6.1M 20' 77S Center	15.2M 50' 77L Center	5.9M 19.5' 77HL Outer	0M 0' Hammerhead
15.2 M	50	1	0	0	0	1	1
18.3 M	60	1	1	0	0	1	1
21.3 M	70	1	0	1	0	1	1
24.4 M	80	1	1	1	0	1	1
27.4 M	90	1	0	2	0	1	1
30.5 M	100	1	0	0	1	1	1
33.5 M	110	1	1	0	1	1	1
36.6 M	120	1	0	1	1	1	1
39.6 M	130	1	1	1	1	1	1
42.7 M	140	1	0	2	1	1	1
45.7 M	150	1	0	0	2	1	1
48.8 M	160	1	1	0	2	1	1
51.8 M	170	1	0	1	2	1	1
54.9 M	180	1	1	1	2	1	1
57.9 M	190	1	0	2	2	1	1
61.0 M	200	1	0	0	3	1	1
64.0 M	210	1	1	0	3	1	1
67.1 M	220	1	0	1	3	1	1
70.1 M	230	1	1	1	3	1	1
73.2 M	240	1	0	2	3	1	1

### 77LH Offset Tip

Boom Length (Meters)	Boom Length (Feet)	Boom Sections					
		9.1M 30' 77SA Inner	3.0M 10' 77S Center	6.1M 20' 77S Center	15.2M 50' 77L Center	5.9M 19.5' 77HL Outer	9.1M 30' 77LA Offset Tip
24.4 M	80	1	0	0	0	1	1
27.4 M	90	1	1	0	0	1	1
30.5 M	100	1	0	1	0	1	1
33.5 M	110	1	1	1	0	1	1
36.6 M	120	1	0	2	0	1	1
39.6 M	130	1	0	0	1	1	1
42.7 M	140	1	1	0	1	1	1
45.7 M	150	1	0	1	1	1	1
48.8 M	160	1	1	1	1	1	1
51.8 M	170	1	0	2	1	1	1
54.9 M	180	1	0	0	2	1	1
57.9 M	190	1	1	0	2	1	1
61.0 M	200	1	0	1	2	1	1
64.0 M	210	1	1	1	2	1	1
67.1 M	220	1	0	2	2	1	1
70.1 M	230	1	0	0	3	1	1
73.2 M	240	1	1	0	3	1	1
76.2 M	250	1	0	1	3	1	1
79.2 M	260	1	1	1	3	1	1
82.3 M	270	1	0	2	3	1	1
85.3 M	280	1	0	0	4	1	1

## GROUND PRESSURE

Lifting crane with 50' (15.2 mm) boom with Hammerhead Tip and standard counterweight

44' (1,117 M) shoes .....	9.80 psi
50' (1,270 M) shoes .....	8.60 psi

# HC 210 HYDRAULIC CRAWLER SPECIFICATIONS

## **⚠ WARNING**

**The ratings in this chart are for planning purposes only. Only those ratings specifically assigned to a crane and mounted in the Operator's Cab or in the Operator's Manual should be used for actual operation.**

**This rating chart is invalid if the crane has been modified or altered by use of other than GENUINE AMERICAN PARTS as such modifications or alterations may affect its capacity or safe operation. See American Crane Corporation Service Bulletin #259.**

Ratings in this chart are in POUNDS (Kgs) and do not exceed the percentage of tipping specified for this crane by ANSI B30.5. All ratings require that the crane be standing level on a firm uniformly supporting surface.

Do not lift loads in excess of those shown on this chart. Lifting loads in excess of those shown or operation not in accordance with good operating practice, including limitations shown on page 3499 of Operator's Manual, can cause tipping, structural damage or catastrophic failure.

Asterisk (\*) areas on this chart indicate ratings which are limited by strength of material or factors other than stability (tipping).

"RADIUS IN FEET" is the horizontal distance at ground level from the crane centerline of rotation to a vertical line through the center of gravity of the suspended load.

When using the main boom fall with jib in place, the main fall ratings must be reduced by the jib effective weight shown on the jib rating chart plus twice the weight of all suspended blocks, slings, rope, etc., at the jib fall.

When using the main boom fall with boom tip extension in place, the main fall ratings must be reduced by the weight of the boom tip extension plus twice the weight of all suspended blocks, slings, rope, etc., at the boom tip extension fall.

Blocks, slings, buckets and other load carrying devices are considered part of the load. The weight of standard hoisting ropes for the rating at a given radius has been calculated as part of the boom point load and need not be considered in determining net allowable loads.

This chart was developed exclusively for use with a boom only. Under no circumstances are these ratings to be interpreted for use with a jib.

Ratings shown on this chart make no allowance for such factors as out of plumb loads, wind, poor soil conditions, improper inflation of rubber tires and dynamic effects due to excessive operating speeds. The user (operator) must exercise judgement to make allowance for these conditions. See page 3499 of Operator's Manual for detailed information.

No account is taken of the wind force on the load. This effect, which can be substantial for loads with large surface areas, must be considered by the user. In any wind it is strongly recommended that taglines be used to control the load.

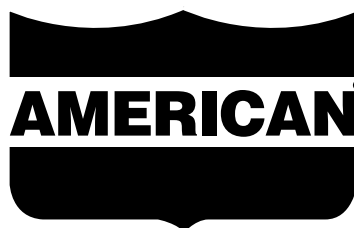
MAST HOIST LINE is 17 parts of .75 inch (19 mm) diameter 6 x 26, WS, FW, RAL, IWRC, EIPS wire rope with a minimum breaking strength of 58,800 pounds (26,672 Kg).

PENDANT SUSPENSION LINE is 2 parts of 1.375 inch (35 mm) diameter monolay wire rope with a minimum breaking strength of 208,000 pounds (94,349 Kg).

MAIN LOAD LINE is 1.125 inch (29 mm) diameter 6 x 25, RRL, IWRC, EIPS wire rope with a minimum breaking strength of 130,000 pounds (58,968 Kg).

Auxiliary Load Line is 1 inch (25mm) diameter 6x25, RRL, IWRC, EIPS wire rope with a minimum breaking strength of 103,400 pounds (46,901 kgs).

Erection "OVER THE END" is with the boom over the idler end with idler tumblers blocked (See Operator's Manual for blocking instructions). Erection "OVER THE SIDE" is with the boom 90° to the side frames and with the side frames extended. Blocks, slings and other load carrying devices must be on the ground during erection.



# LOAD HOISTING INFORMATION

## 77LH Hammerhead Boom

Max. Lifting Capacity (Lbs.)	Minimum Parts of Line	Max. Hoisting Distance - Feet	
		Main (Front)	Aux. (Rear)
420,000	12	110	110
408,540	11	120	120
371,060	10	130	130
334,260	9	150	150
297,120	8	170	170
259,980	7	190	190
222,840	6	220	220
185,700	5	270	270
148,560	4	340	340
111,420	3	450	450
74,280	2	680	680
37,140	1	1,360	1,360

Max. Lifting Capacity (Tonnes)	Minimum Parts of Line	Max. Hoisting Distance - Meters	
		Main (Front)	Aux. (Rear)
190.50	12	33.5 M	33.5 M
185.31	11	36.5 M	36.5 M
168.31	10	39.6 M	39.6 M
151.65	9	45.7 M	45.7 M
134.80	8	51.8 M	51.8 M
117.95	7	57.9 M	57.9 M
101.10	6	67.1 M	67.1 M
84.25	5	82.3 M	82.3 M
69.40	4	103.6 M	103.6 M
50.55	3	137.2 M	137.2 M
33.70	2	207.3 M	207.3 M
16.85	1	414.5 M	414.5 M

## 77LH Offset Tip

Max. Lifting Capacity (Lbs.)	Minimum Parts of Line	Max. Hoisting Distance - Feet	
		Main (Front)	Aux. (Rear)
235,130	7	190	190
222,840	6	220	220
185,700	5	270	270
148,560	4	340	340
111,420	3	450	450
74,280	2	680	680
37,140	1	1,360	1,360

Max. Lifting Capacity (Tonnes)	Minimum Parts of Line	Max. Hoisting Distance - Meters	
		Main (Front)	Aux. (Rear)
106.65	7	57.9 M	57.9 M
101.10	6	67.1 M	67.1 M
84.25	5	82.3 M	82.3 M
69.40	4	103.6 M	103.6 M
50.55	3	137.2 M	137.2 M
33.70	2	207.3 M	207.3 M
16.85	1	414.5 M	414.5 M

# MAXIMUM BOOM & JIB SELF ERECTION DATA

## 77LH Hammerhead Boom

	Over the End		Over the Side	
	Boom Length (Ft.)	Jib Length (Ft.)	Boom Length (Ft.)	Jib Length (Ft.)
#16HL JIB	240	0	220	40
	230	40	210	50
	220	60	200	70
	210	80	-	-

	Over the End		Over the Side	
	Boom Length (Meters)	Jib Length (Meters)	Boom Length (Meters)	Jib Length (Meters)
#16HL JIB	73.2	0	67.1	12.2
	70.1	12.2	64.0	15.2
	67.1	18.3	61.0	21.3
	64.0	24.4	-	-

## 77LH Offset Tip

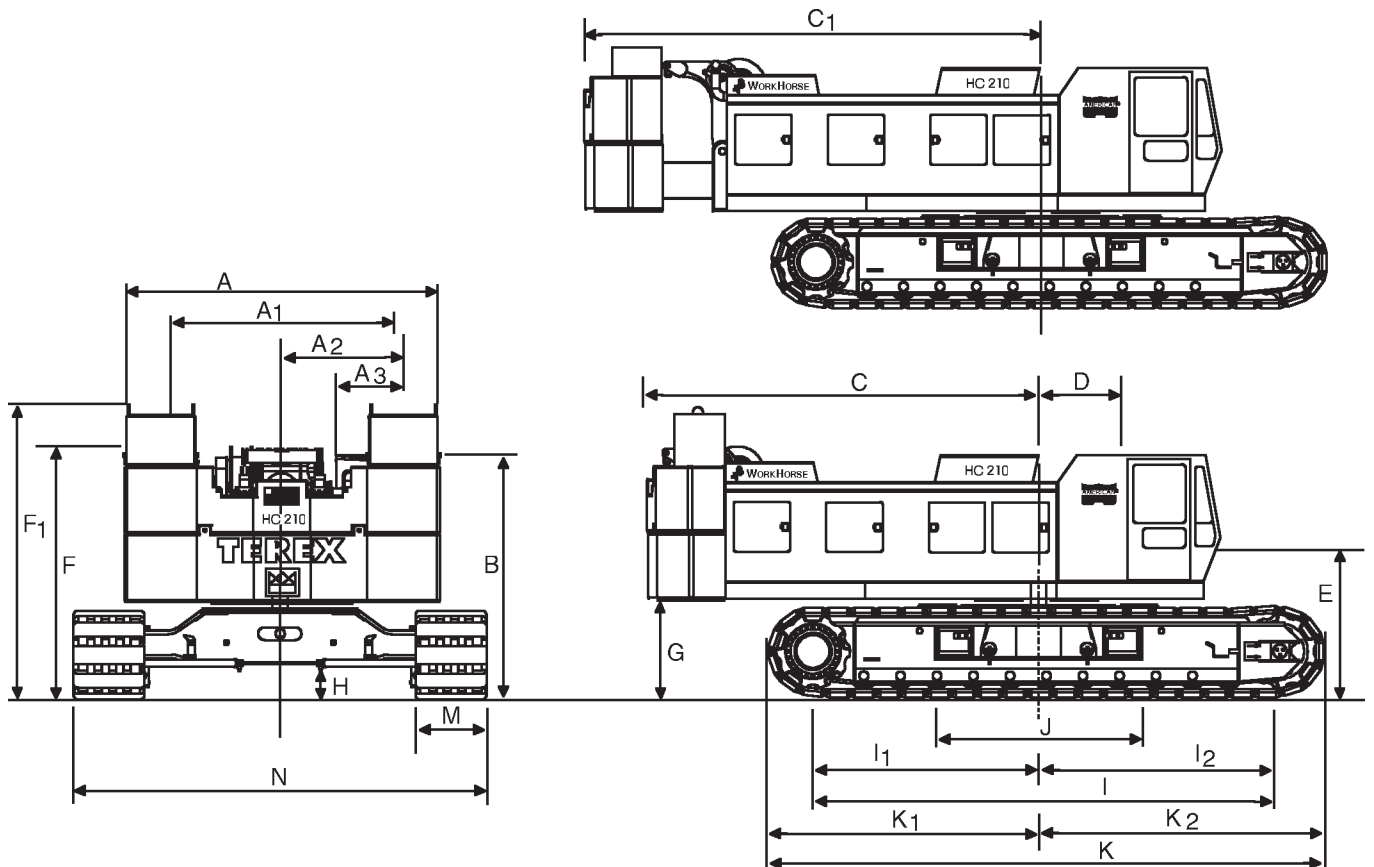
	Over the End		Over the Side	
	Boom Length (Ft.)	Jib Length (Ft.)	Boom Length (Ft.)	Jib Length (Ft.)
#16HL JIB	280	0	250	40
	270	60	240	50
	260	80	230	70
	250	100	220	80

	Over the End		Over the Side	
	Boom Length (Meters)	Jib Length (Meters)	Boom Length (Meters)	Jib Length (Meters)
#16HL JIB	85.3	0	76.2	12.2
	82.3	18.3	73.2	15.2
	79.2	24.4	70.1	21.3
	76.2	30.5	67.1	24.4

# WEIGHTS

	LBS.	KG.		LBS.	KG.
Lifting Crane with standard counterweight, 50' (15.2 m) boom with hammerhead tip, transport package, 3rd Drum and 44" (965 mm) shoes .....	315,080	142,958	Crane boom outerbase .....	2,890	1,085
Main Counterweight – Total .....	89,000	40,370	Crane boom inner, misc. & 3rd drum .....	8,015	3,636
Lower with 2-Removal Cylinders .....	35,000	15,880	Crawler Side Frames 44" (1,117 mm) shoes .....	76,160	34,545
Middle Overlay .....	35,000	15,880	Travel weight includes upper, carbody, transportation package, boom inner, counterweight handling sheaves and third drum .....	94,060	42,676
Upper Overlays (2) .....	19,000	8,618	Travel weight includes upper, carbody, but NO boom inner, transport package, 3rd drum .....	84,045	38,132
Crawler side frame counterweight (4) .....	48,000	21,775			
Crane boom outer hammerhead (six sheave) .....	4,970	2,255			

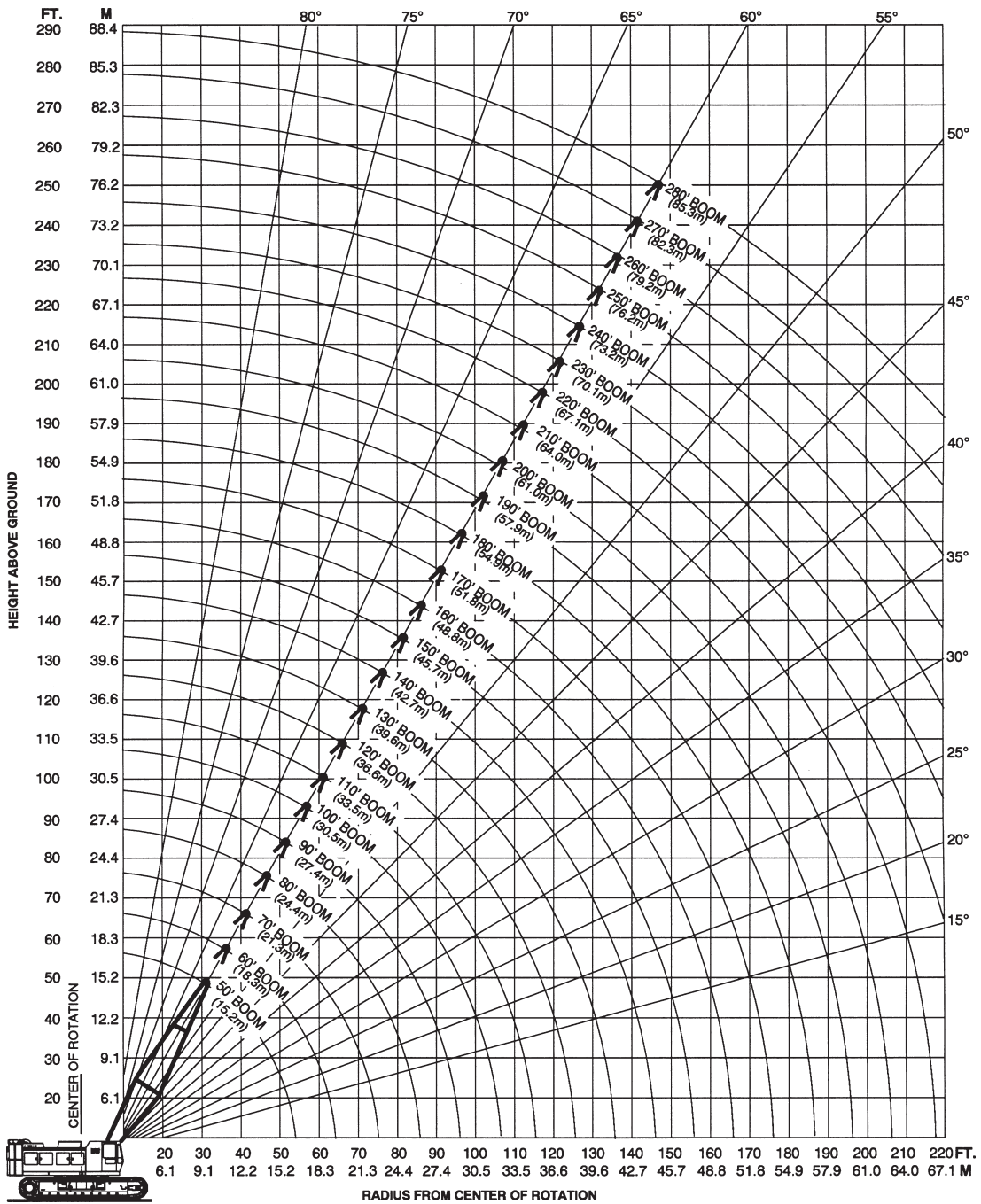
# HC 210 WORKHORSE GENERAL DIMENSIONS



	FT	MM		FT	MM		
A.	Width of counterweight .....	16' 0"	4,267	I <sub>1</sub> .	Center of drive tumbler to center of rotation .....	11' 9-1/4"	3,588
A <sub>1</sub> .	Width over machinery cab .....	11' 5"	3,480	I <sub>2</sub> .	Center of idler tumbler to center of rotation .....	12' 5-5/8"	3,800
A <sub>2</sub> .	Centerline of machine to outside of operator's cab .....	6' 0"	1,829	J.	Width of carbody (including vertical jacks) .....	10' 10"	3,300
A <sub>3</sub> .	Width of operator's cab .....	3' 4"	1,016	K.	Overall length of crawlers .....	28' 2"	8,585
B.	Height over operator's cab .....	12' 0"	3,658	K <sub>1</sub> .	Over drive tumbler to center of rotation .....	13' 7-7/8"	4,162
C.	Tailswing with WorkHorse retracted .....	19' 8"	5,867	K <sub>2</sub> .	Over idler tumbler to center of rotation .....	14' 4-5/16"	4,377
C <sub>1</sub> .	Tailswing with WorkHorse extended .....	22' 8"	9,908	M.	Width of tread shoe (standard) .....	44"	1,118
D.	Center rotation to boom feet .....	3' 6"	1,066		(optional) .....	50"	1,270
E.	Ground to center of boom foot .....	6' 8"	2,032	N.	Overall width of crawlers		
F.	Height over boom hoist .....	12' 7-9/16"	3,850		44" (1,118 mm) shoes .....	22' 4"	6,807
F <sub>1</sub> .	Ground to top lifting .....	13' 4-1/4"	4,070		50" (1,270 mm) shoes .....	22' 10"	6,960
G.	Ground to bottom of counterweight .....	4' 6-3/4"	1,391	N <sub>1</sub> .	Length of crawlers axles .....	19' 4-3/4"	5,963
H.	Minimum ground clearance .....	1' 7-1/2"	495				
I.	Center to center of crawler tumblers .....	24' 2-15/16"	7,389				

# AMERICAN MODEL HC 210 WORKING RANGES

## BOOM ANGLE DIAGRAM



For more information, product demonstration, or details on sales, lease and rental plans, please contact your local Terex American Crane Distributor.

We reserve the right to amend these specifications at any time without notice. The only warranty applicable is our standard written warranty applicable to the particular product and sale. We make no other warranty, expressed or implied.



**AMERICAN CRANE CORPORATION**  
 202 Raleigh Street • Wilmington, NC 28412 USA  
 (910) 395-8500 • FAX: (910) 395-8538