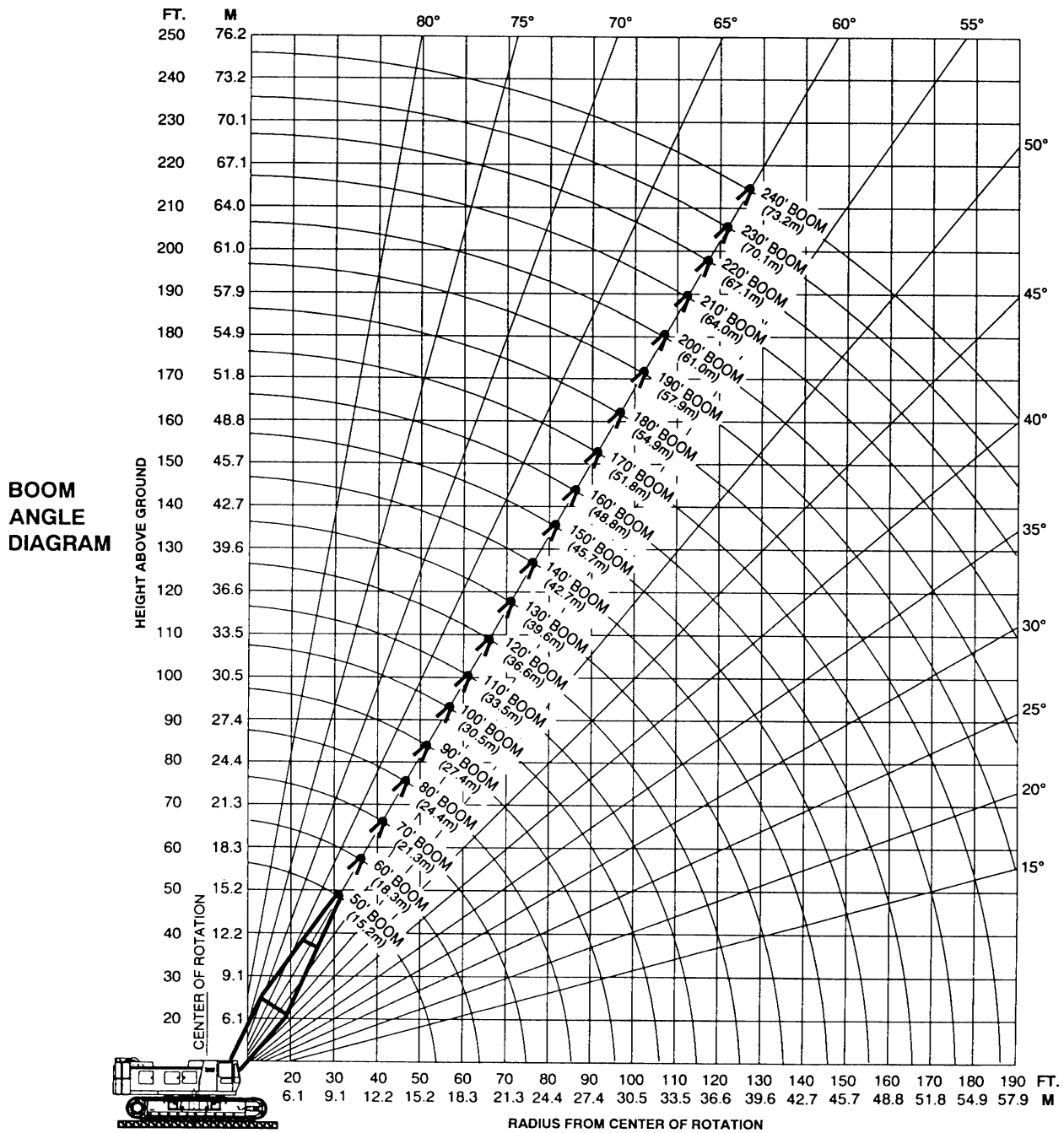


AMERICAN MODEL HC 125WH WORKING RANGES



For more information, product demonstration, or details on sales, lease and rental plans, please contact your local Terex American Crane Distributor.

We reserve the right to amend these specifications at any time without notice. The only warranty applicable is our standard written warranty applicable to the particular product and sale. We make no other warranty, expressed or implied.

TEREX CRANES

AMERICAN CRANE CORPORATION
 202 Raleigh Street • Wilmington, NC 28412 USA
 (910) 395-8500 • FAX: (910) 395-8538

LOAD HOISTING INFORMATION

Maximum Lifting Capacity in Pounds	Minimum Parts of Line	Maximum Hoisting Distance in Feet	
		Main (Front)	Aux. (rear)
250,000	9	160	160
236,000	8	180	180
206,500	7	200	200
177,000	6	240	240
147,500	5	290	290
118,000	4	360	360
88,500	3	480	480
59,000	2	730	730
29,500	1	1,460	1,460

Maximum Lifting Capacity in Kilograms	Minimum Parts of Line	Maximum Hoisting Distance in Meters	
		Main (Front)	Aux. (rear)
113,400	9	49	49
107,049	8	55	55
93,668	7	61	61
80,287	6	73	73
66,906	5	88	88
53,524	4	110	110
40,143	3	146	146
26,762	2	223	223
13,381	1	445	445

BOOM COMPOSITION CHART

Boom Length		25' (7.6 M) 59H Inner	10' (3.0 M) 59H Center	20' (6.1 M) 59H Center	40' (12.2 M) 59H Center	25' (7.6 M) 59H Outer
Feet	Meters					
50	15.2	1	0	0	0	1
60	18.3	1	1	0	0	1
70	21.3	1	0	1	0	1
80	24.4	1	1	1	0	1
90	27.4	1	0	0	1	1
100	30.5	1	1	0	1	1
110	33.5	1	0	1	1	1
120	36.6	1	1	1	1	1
130	39.6	1	0	0	2	1
140	42.7	1	1	0	2	1

Boom Length		25' (7.6 M) 59H Inner	10' (3.0 M) 59H Center	20' (6.1 M) 59H Center	40' (12.2 M) 59H Center	25' (7.6 M) 59H Outer
Feet	Meters					
150	45.7	1	0	1	2	1
160	48.8	1	1	1	2	1
170	51.8	1	0	0	3	1
180	54.9	1	1	0	3	1
190	57.9	1	0	1	3	1
200	61.0	1	1	1	3	1
210	64.0	1	0	0	4	1
220	67.1	1	1	0	4	1
230	70.1	1	0	1	4	1
240	73.2	1	1	1	4	1

MAXIMUM BOOM & JIB SELF-ERECTION DATA

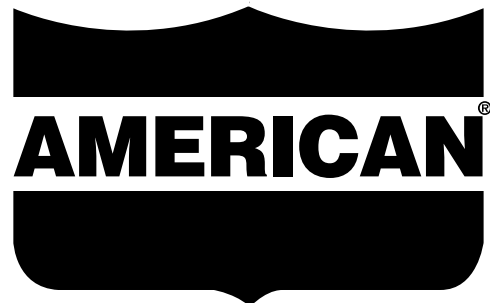
Jib	Over the End				Over the Side			
	Boom Length		Jib Length		Boom Length		Jib Length	
	Feet	Meters	Feet	Meters	Feet	Meters	Feet	Meters
#9HL	240	73.2	0	0.0	230	70.1	0	0.0
	230	70.1	40	12.2	220	67.1	0	0.0
	220	67.1	80	24.4	210	64.0	40	12.2
	—	—	—	—	200	61.0	50	15.2
	—	—	—	—	190	57.9	60	18.3
	—	—	—	—	180	54.9	70	21.3

WEIGHTS

	LBS.	KG
Lifting Crane with standard counterweight, 50' (15.2 mm) boom with offset tip, transport package, 3rd drum and 38" (965 mm) shoes	209,740	95,137
Lifting crane equipped as above and 44" (1,117 mm) shoes	213,030	96,629
Counterweight Including:	52,150	23,665
Basic	31,000	14,061
Overlay	20,000	9,072
2 Removal Cylinders	1,150	522
Crane boom outer (six sheave)	3,260	1,480
Crane boom inner (and misc.)	4,345	1,971
Crawler side frames 38" (965 mm) shoes	70,590	32,020
Crawler Side Frames 44" (1,117 mm) shoes ..	73,880	33,500
Travel weight includes upper, carbody, transportation package, boom inner, counterweight handling sheaves and third drum	83,740	37,985
Second swing motor	580	263

GROUND PRESSURES

Lifting crane with 50 ft. (15.2 mm) boom with offset tip and standard counterweight.	
38" (965 mm) shoes 10.5 PSI	44" (1,117 mm) shoes 9.03 PSI



LIFT RATINGS IN KILOGRAMS (continued)

With 59H Open Throat Boom, 7.3M Floating Mast and 23,134 Kg Counterweight Fully Extended

Boom & Mast Length	Radius Meters	Boom Angle Degrees	Side Frames Retracted Kilograms	Side Frames Extended Kilograms	From Boom Pt. to Ground Meters	
51.8 M Boom	44.0	34.3	3,980	4,820	31	
	46.0	30.1	3,670	4,470	28	
	48.0	25.3	3,390	4,130*	24	
	(cont.)	50.0	19.4	3,130	3,750*	19
		10.1	80.8	29,050*	29,050*	56
54.9 M Boom	11.0	79.8	28,150	28,740*	56	
	12.0	78.7	25,170	28,430*	56	
	13.0	77.7	22,630	26,720	56	
	14.0	76.6	20,510	24,260	55	
	15.0	75.5	18,720	22,100	55	
	16.0	74.4	17,190	20,260	55	
	17.0	73.3	15,850	18,670	55	
	18.0	72.2	14,680	17,280	54	
	19.0	71.1	13,640	16,060	54	
	20.0	70.0	12,830	14,970	54	
	22.0	67.8	11,260	13,250	53	
	24.0	65.5	9,980	11,750	52	
	26.0	63.2	8,910	10,510	51	
	28.0	60.8	8,010	9,470	50	
	30.0	58.4	7,230	8,570	49	
	32.0	55.9	6,550	7,790	47	
	34.0	53.3	5,960	7,110	46	
	36.0	50.7	5,450	6,520	44	
	38.0	47.9	4,980	5,990	43	
	40.0	45.0	4,570	5,520	41	
42.0	42.0	4,200	5,090	39		
44.0	38.7	3,850	4,700	36		
46.0	35.2	3,550	4,360	34		
48.0	31.4	3,280	3,970*	31		
50.0	27.1	3,010	3,600*	27		
52.0	22.0	2,780	3,260*	23		
54.0	15.5	2,570	2,950*	17		
57.9 M Boom	10.4	81.0	25,390*	25,390*	59	
	11.0	80.3	25,210*	25,210*	59	
	12.0	79.3	24,890*	24,890*	59	
	13.0	78.3	22,530	24,500*	59	
	14.0	77.3	20,420	24,110*	59	
	15.0	76.3	18,620	22,000	58	
	16.0	75.3	17,080	20,160	58	
	17.0	74.2	15,740	18,560	58	
	18.0	73.2	14,580	17,180	57	
	19.0	72.2	13,540	15,960	57	
	20.0	71.1	12,730	14,870	57	
	22.0	69.0	11,160	13,150	56	
	24.0	66.9	9,880	11,650	55	
	26.0	64.7	8,810	10,410	54	
	28.0	62.5	7,910	9,360	53	
	30.0	60.2	7,130	8,460	52	
	32.0	57.9	6,450	7,690	51	
	34.0	55.5	5,870	7,020	50	
	36.0	53.1	5,340	6,420	48	
	38.0	50.6	4,880	5,880	47	
40.0	48.0	4,470	5,420	45		
42.0	45.2	4,090	4,990	43		
44.0	42.3	3,750	4,600	41		
46.0	39.3	3,450	4,210*	39		
48.0	36.1	3,180	3,830*	36		
50.0	32.5	2,910	3,460*	33		
52.0	28.6	2,680	3,140*	30		
54.0	24.1	2,470	2,830*	26		
56.0	18.7	2,270	2,550*	120		
61.0 M Boom	11.0	80.8	22,350*	22,350*	62	
	12.0	79.9	22,050*	22,050*	62	
	13.0	78.9	21,700*	21,700*	62	
	14.0	77.9	20,320	21,190*	62	
	15.0	77.0	18,520	20,850*	61	
	16.0	76.0	16,970	20,060	61	
	17.0	75.0	15,630	18,460	61	
	18.0	74.1	14,460	17,070	61	
	19.0	73.1	13,420	15,850	60	
	20.0	72.1	12,620	14,760	60	
	22.0	70.1	11,060	13,050	59	
	61.0 M Boom	24.0	68.1	9,770	11,550	59
26.0		66.1	8,700	10,300	58	
28.0		64.0	7,790	9,250	57	
30.0		61.9	7,010	8,350	56	
32.0		59.7	6,340	7,580	55	
34.0		57.5	5,750	6,900	53	
36.0		55.2	5,220	6,300	52	
38.0		52.9	4,760	5,770	51	
40.0		50.5	4,350	5,300	49	
42.0		48.0	3,970	4,870	47	
44.0		45.4	3,640	4,440*	45	
46.0		42.7	3,330	4,010*	43	
48.0	39.8	3,050	3,620*	41		
50.0	36.8	2,800	3,270*	38		
52.0	33.5	2,560	2,950*	36		
54.0	29.9	2,340	2,650*	32		
56.0	25.9	2,140	2,370*	29		
58.0	21.1	1,960	2,120*	24		
60.0	15.0	1,780	1,880*	18		
64.0 M Boom	11.6	80.7	19,780*	19,780*	65	
	12.0	80.3	19,640*	19,640*	65	
	13.0	79.4	19,330*	19,330*	65	
	14.0	78.5	18,870*	18,870*	65	
	15.0	77.6	18,420	18,430*	65	
	16.0	76.7	16,880	18,140*	64	
	17.0	75.8	15,540	17,560*	64	
	18.0	74.8	14,360	16,970	64	
	19.0	73.9	13,330	15,750	64	
	20.0	73.0	12,530	14,660	63	
	22.0	71.1	10,960	12,950	63	
	24.0	69.2	9,680	11,450	62	
26.0	67.3	8,600	10,210	61		
28.0	65.3	7,690	9,160	60		
30.0	63.3	6,920	8,270	59		
32.0	61.3	6,250	7,490	58		
34.0	59.2	5,650	6,810	57		
36.0	57.1	5,130	6,210	56		
38.0	54.9	4,670	5,680	54		
40.0	52.7	4,250	5,210	53		
42.0	50.4	3,880	4,760*	51		
44.0	48.1	3,2550	4,300*	50		
46.0	45.6	3,240	3,870*	48		
48.0	43.0	2,960	3,490*	46		
50.0	40.3	2,700	3,140*	43		
52.0	37.5	2,470	2,820*	41		
54.0	34.4	2,250	2,520*	38		
56.0	31.1	2,050	2,250*	35		
58.0	27.4	1,870	2,000*	31		
60.0	23.1	1,690	1,760*	27		
62.0	18.0	1,540	1,550*	22		
64.0	10.7	1,340*	1,340*	14		
67.1 M Boom	11.9	80.9	17,560*	17,560*	68	
	12.0	80.8	17,560*	17,560*	68	
	13.0	79.9	17,280*	17,280*	68	
	14.0	79.1	16,730*	16,730*	68	
	15.0	78.2	16,430*	16,430*	68	
	16.0	77.3	15,910*	15,910*	67	
	17.0	76.4	15,420	15,660*	67	
	18.0	75.6	14,250	15,160*	67	
	19.0	74.7	13,220	14,930*	67	
	20.0	73.8	12,420	14,560	66	
	22.0	72.0	10,850	12,850	66	
	24.0	70.2	9,560	11,350	65	
26.0	68.3	8,500	10,110	64		
28.0	66.5	7,590	9,050	64		
30.0	64.6	6,810	8,150	63		
32.0	62.7	6,130	7,370	62		
34.0	60.8	5,540	6,690	61		
36.0	58.8	5,020	6,100	59		
38.0	56.7	4,550	5,570	58		
40.0	54.7	4,140	5,060*	57		
42.0	52.5	3,760	4,540*	55		
44.0	50.4	3,430	4,080*	54		
67.1 M Boom	46.0	48.1	3,120	3,660*	52	
	48.0	45.8	2,840	3,280*	50	
	50.0	43.3	2,580	2,930*	48	
	52.0	40.8	2,340	2,610*	46	
	54.0	38.0	2,130	2,320*	43	
	56.0	35.2	1,930	2,050*	41	
	58.0	32.1	1,740	1,800*	38	
	60.0	28.7	1,570	1,570*	34	
	62.0	24.9	1,360*	1,360*	30	
	64.0	20.4	1,170*	1,170*	25	
	70.1 M Boom	12.5	80.8	15,450*	15,450*	71
		13.0	80.4	15,210*	15,210*	71
14.0		79.5	14,960*	14,960*	71	
15.0		78.7	14,730*	14,730*	71	
16.0		77.9	14,290*	14,290*	71	
17.0		77.0	13,800*	13,800*	70	
18.0		76.2	13,580*	13,580*	70	
19.0		75.3	12,630*	12,630*	70	
20.0		74.5	12,320	12,410*	70	
22.0		72.8	10,760	11,970*	69	
24.0		71.1	9,470	11,250	68	
26.0		69.3	8,390	10,000	68	
28.0	67.6	7,480	8,950	67		
30.0	65.8	6,700	8,050	66		
32.0	64.0	6,020	7,270	65		
34.0	62.2	5,440	6,590	64		
36.0	60.3	4,910	5,990	63		
38.0	58.4	4,450	5,450*	62		
40.0	56.4	4,030	4,880*	60		
42.0	54.4	3,660	4,370*	59		
44.0	52.4	3,320	3,900*	58		
46.0	50.3	3,010	3,480*	56		
48.0	48.1	2,740	3,110*	54		
50.0	45.9	2,470	2,760*	52		
52.0	43.6	2,240	2,440*	50		
54.0	41.1	2,020	2,150*	48		
56.0	38.6	1,830	1,890*	46		
58.0	35.9	1,630*	1,630*	43		
60.0	33.0	1,410*	1,410*	40		
62.0	29.8	1,190*	1,190*	37		
64.0	26.3	1,000*	1,000*	33		
73.2 M Boom	12.8	80.9	13,530*	13,530*	74	
	13.0	80.8	13,500*	13,500*	74	
	14.0	80.0	12,670*	12,670*	74	
	15.0	79.2	11,920*	11,920*	74	
	16.0	78.4	11,780*	11,780*	74	
	17.0	77.6	11,650*	11,650*	74	
	18.0	76.8	11,020*	11,020*	73	
	19.0	76.0	10,930*	10,930*	73	
	20.0	75.2	10,850*	10,850*	73	
	22.0	73.5	10,250*	10,250*	72	
	24.0	71.9	9,350	9,730*	72	
	26.0	70.2	8,280	9,270*	71	
28.0	68.6	7,360	8,830	70		
30.0	66.9	6,590	7,940	69		
32.0	65.1	5,910	7,160	68		
34.0	63.4	5,320	6,480	67		
36.0	61.6	4,790	5,860*	66		
38.0	59.8	4,330	5,220*	65		
40.0	58.0	3,920	4,650*	64		
42.0	56.1	3,540	4,140*	63		
44.0	54.2	3,200				

LIFT RATINGS IN POUNDS (continued)

With 59H Open Throat Boom, 24' Floating Mast and 51,000 Pound Counterweight Fully Extended

Boom & Mast Length	Radius Feet	Boom Angle Degrees	Side Frames Retracted Pounds	Side Frames Extended Pounds	From Boom Pt. to Ground Feet
190' Boom	34	81.0	55,980*	55,980*	194
	35	80.7	55,700*	55,700*	194
	40	79.1	54,110	54,810*	193
	50	76.0	40,190	47,470	191
	60	72.9	31,440	37,060	188
	70	69.7	25,690	29,990	185
	80	66.5	21,300	25,120	181
	90	63.1	17,960	21,260	176
	100	59.7	15,340	18,230	170
	110	56.1	13,220	15,800	164
	120	52.4	11,480	13,800	157
	130	48.5	10,010	12,120	149
	140	44.3	8,760	10,700	139
	150	39.8	7,700	9,410*	128
	160	34.8	6,770	8,120*	115
	170	29.0	5,960	6,970*	98
180	21.9	5,240	5,960*	77	
190	11.2	4,610	5,040*	43	
200' Boom	36	80.8	49,280*	49,280*	204
	40	79.7	48,570*	48,570*	203
	50	76.7	39,950	45,540*	201
	60	73.8	31,200	36,830	199
	70	70.8	25,440	29,750	195
	80	67.7	21,060	24,900	192
	90	64.6	17,710	21,010	187
	100	61.3	15,080	17,980	182
	110	58.0	12,960	15,550	176
	120	54.6	11,220	13,540	169
	130	51.0	9,750	11,870	162
	140	47.2	8,500	10,440*	153
	150	43.1	7,440	8,960*	143
	160	38.7	6,500	7,670*	131
	170	33.8	5,690	6,550*	118
	180	28.3	4,980	5,580*	101
190	21.4	4,340	4,700*	79	
200	10.9	3,780	3,910*	144	
210' Boom	38	80.7	43,610*	43,610*	214
	40	80.2	43,270*	43,270*	214
	50	77.4	39,730	40,510*	212
	60	74.6	30,970	36,610	209
	70	71.7	25,240	29,530	206
	80	68.8	20,850	24,690	202
	90	65.9	17,510	20,820	198
	100	62.8	14,870	17,780	193
	110	59.7	12,750	15,340	188
	120	56.5	11,010	13,340	182
	130	53.1	9,540	11,660	174
	140	49.6	8,300	10,140*	166
	150	46.0	7,230	8,670*	157
	160	42.0	6,300	7,390*	147
	170	37.7	5,490	6,270*	135
	180	33.0	4,770	5,290*	121
190	27.5	4,130	4,420*	103	
200	20.8	3,560	3,650*	81	
210	10.7	2,960*	2,960*	45	
220' Boom	39	80.9	38,720*	38,720*	224
	40	80.6	38,510*	38,510*	224
	50	78.0	35,940*	35,940*	222
	60	75.3	30,730	33,690*	219
	70	72.6	25,000	29,290	217
	80	69.8	20,610	24,460	213
	90	67.0	17,260	20,570	209
	100	64.2	14,630	17,540	205
	110	61.2	12,510	15,100	199
	120	58.2	10,750	13,080	193
	130	55.1	9,280	11,380*	187
	140	51.8	8,040	9,660*	179
	150	48.4	6,970	8,190*	171
	160	44.8	6,040	6,920*	161
	170	41.0	5,230	5,820*	151
	180	36.8	4,500	4,850*	138
190	32.2	3,860	3,990*	124	
200	26.9	3,240*	3,240*	106	
210	20.4	2,570*	2,570*	83	
220	10.4	1,970*	1,970*	46	
230' Boom	41	80.8	34,060*	34,060*	234
	50	78.5	32,230*	32,230*	232
	60	75.9	29,760*	29,760*	230
	70	73.4	24,780	26,690*	227
	80	70.7	20,380	24,230	224
	90	68.1	17,030	20,350	220
	100	65.4	14,390	17,310	216
	110	62.6	12,270	14,860	211
	120	59.7	10,520	12,860	205
	130	56.8	9,060	10,990*	199
	140	53.8	7,810	9,270*	192
	150	50.6	6,730	7,810*	184
	160	47.3	5,800	6,540	175
	170	43.8	4,980	5,430*	165
	180	40.0	4,260	4,470*	154
	190	36.0	3,630	3,630*	141
200	31.5	2,870*	2,870*	126	
210	26.3	2,210*	2,210*	108	
220	19.9	1,610*	1,610*	84	
230	10.2	1,090*	1,090*	47	
240' Boom	42	80.9	29,830*	29,830*	244
	50	79.0	27,070*	27,070*	242
	60	76.5	25,030*	25,030*	240
	70	74.1	22,350*	22,350*	237
	80	71.6	20,140	21,080*	234
	90	69.0	16,780	19,180*	231
	100	66.4	14,150	17,070	227
	110	63.8	12,010	14,610	222
	120	61.1	10,260	12,500*	217
	130	58.3	8,790	10,480*	211
	140	55.5	7,540	8,770*	204
	150	52.5	6,470	7,310*	197
	160	49.5	5,540	6,050*	189
	170	46.2	4,720	4,960*	180
	180	42.8	4,000	4,000*	169
	190	39.2	3,160*	3,160*	158
200	35.2	2,410*	2,410*	145	
210	30.8	1,760*	1,760*	129	
220	25.7	1,170*	1,170*	110	

LIFT RATINGS IN KILOGRAMS

With 59H Open Throat Boom, 7.3M Floating Mast and 23,134 Kg Counterweight Fully Extended

Boom & Mast Length	Radius Meters	Boom Angle Degrees	Side Frames Retracted Kilograms	Side Frames Extended Kilograms	From Boom Pt. to Ground Meters
15.2 M Boom	3.7	81.0	113,400*	113,400*	17
	4.0	79.7	113,400*	113,400*	17
	4.5	77.8	101,670*	101,670*	17
	5.0	75.8	88,390	91,510*	17
	5.5	73.8	75,960	83,170*	17
	6.0	71.9	66,550	76,260*	17
	7.0	67.8	53,230	65,380*	16
	8.0	63.7	44,240	53,770	16
	9.0	59.4	37,800	45,400	15
	10.0	54.9	32,920	39,230	14
	11.0	50.1	29,120	34,480	14
	12.0	44.9	26,070	30,700	13
	13.0	39.2	23,560	27,640	12
	14.0	32.7	21,470	25,120	10
	15.0	24.7	19,670	22,960	8
	18.3 M Boom	4.3	80.6	107,140*	107,140*
4.5		79.8	101,620*	101,620*	20
5.0		78.2	88,430	91,470*	20
5.5		76.6	75,970	83,130*	20
6.0		75.0	66,560	76,220*	20
7.0		71.7	53,230	65,340*	19
8.0		68.4	44,230	53,780	19
9.0		64.9	37,790	45,400	19
10.0		61.4	32,900	39,230	18
11.0		57.7	29,090	34,460	17
12.0		53.9	26,060	30,690	17
13.0		49.9	23,550	27,620	16
14.0		45.6	21,450	25,110	15
15.0		41.0	19,670	22,970	14
16.0		35.9	18,130	21,140	13
17.0		30.0	16,810	19,560	11
18.0	22.8	15,640	18,180	9	
21.3 M Boom	4.9	80.3	92,160	93,700*	23
	5.0	79.9	88,440	91,420*	23
	5.5	78.6	75,990	83,080*	23
	6.0	77.2	66,570	76,180*	23
	7.0	74.4	53,230	65,310*	23
	8.0	71.6	44,220	53,770	22
	9.0	68.7	37,780	45,410	22
	10.0	65.8	32,890	39,240	21
	11.0	62.8	29,080	34,460	21
	12.0	59.7	26,050	30,690	20
	13.0	56.5	23,540	27,620	20
	14.0	53.2	21,440	25,120	19
	15.0	49.8	19,660	22,970	18
	16.0	46.1	18,130	21,140	17
	17.0	42.2	16,810	19,570	16
	18.0	38.0	15,640	18,190	15
19.0	33.4	14,620	16,980	14	
20.0	28.0	13,700	15,910	12	