



AMERICAN HC 50

Hydraulic Crawler Crane 46 HI Boom

LIFT RATINGS IN POUNDS

With 46HI Angle Boom, 3 Sheave Tip, 39,000 Pound Counterweight

Boom Length	Radius (Feet)	Boom Angle (Degrees)	Side Frames Extended (Pounds)	From Boom Pt. to Ground (Feet)	Boom Length	Radius (Feet)	Boom Angle (Degrees)	Side Frames Extended (Pounds)	From Boom Pt. to Ground (Feet)	Boom Length	Radius (Feet)	Boom Angle (Degrees)	Side Frames Extended (Pounds)	From Boom Pt. to Ground (Feet)	
40' (12.2M)	10	80.3	100,000*	45	90' (con't)	45	62.4	18,820	85	120' (con't)	90	43.7	6,350	88	
	12	77.4	100,000*	44		50	58.7	16,290	82		95	40.2	5,770	83	
	15	73.0	93,390	44		55	54.9	14,290	79		100	36.3	5,260	76	
	20	65.3	59,020	42		60	50.9	12,650	75		105	32.0	4,800	69	
	25	57.1	42,780	39		65	46.7	11,300	71		110	27.2	4,380	60	
	30	48.1	33,370	35		70	42.2	10,160	66		115	21.4	4,020	49	
	35	37.5	27,190	30		75	37.2	9,180	60		120	13.4	3,680	33	
	40	23.4	22,840	21		80	31.5	8,330	52						
					85	24.8	7,610	43							
					90	15.5	6,970	29							
50' (15.2M)	12	80.0	100,000*	55	100' (30.5M)	19	81.0	62,850	104	130' (39.6M)	24	80.8	43,780	134	
	15	76.4	93,310	54		20	80.4	58,180	104		25	80.4	41,220	134	
	20	70.5	58,910	53		25	77.5	41,800	103		30	78.1	31,830	133	
	25	64.2	42,640	50		30	74.5	32,400	102		35	75.9	25,570	131	
	30	57.7	33,230	48		35	71.5	26,170	100		40	73.6	21,160	130	
	35	50.6	27,040	44		40	68.5	21,770	98		45	71.3	18,050	129	
	40	42.7	22,670	39		45	65.3	18,630	96		50	68.9	15,520	127	
	45	33.5	19,460	33		50	62.2	16,110	94		55	66.6	13,500	125	
50	20.9	16,960	23	55	58.9	14,100	91	60	64.1		11,870	122			
60' (18.3M)	13	80.7	100,000*	65	60	55.4	12,460	88	65		61.7	10,500	120		
	15	78.7	93,230	64	65	51.9	11,110	84	70		59.1	9,350	117		
	20	73.8	58,800	63	70	48.2	9,970	80	75		56.5	8,370	114		
	25	68.8	42,510	61	75	44.2	8,980	75	80		53.8	7,520	110		
	30	63.6	33,100	59	80	39.9	8,140	70	85		51.0	6,780	107		
	35	58.1	26,890	56	85	35.2	7,400	63	90		48.2	6,130	102		
	40	52.3	22,520	53	90	29.9	6,750	55	95		45.1	5,550	98		
	45	46.0	19,330	49	95	23.5	6,180	45	100	41.9	5,040	92			
50	38.9	16,820	43	100	14.7	5,680	31	105	38.5	4,580	86				
55	30.5	14,820	36	110' (33.5M)	21	80.7	53,840	114	110	34.8	4,160	80			
60	19.0	13,190	25		25	78.6	41,600	113	115	30.8	3,790	72			
70' (21.3M)	15	80.4	93,100		74	30	75.9	32,200	112	120	26.1	3,440	63		
	20	76.2	58,630		73	35	73.2	25,960	111	125	20.6	3,140	51		
	25	71.9	42,320		72	40	70.5	21,550	109	130	12.9	2,850	34		
	30	67.6	32,900		70	45	67.7	18,430	107	140' (42.7M)	26	80.7	38,920	144	
	35	63.0	26,700		68	50	64.9	15,900	105		30	79.0	31,640	143	
	40	58.4	22,320		65	55	62.0	13,880	102		35	76.9	25,370	142	
	45	53.4	19,140	62	60	59.0	12,250	100	40		74.8	20,950	141		
	50	48.1	16,630	58	65	55.9	10,890	96	45		72.7	17,850	139		
55	42.4	14,620	53	70	52.7	9,750	93	50	70.5		15,310	137			
60	35.9	12,990	46	75	49.3	8,760	89	55	68.3		13,300	136			
65	28.1	11,640	38	80	45.8	7,920	84	60	66.1		11,660	133			
70	17.6	10,500	27	85	42.0	7,180	79	65	63.8	10,290	131				
80' (24.4M)	16	80.8	83,260	84	90	38.0	6,540	73	70	61.5	9,150	128			
	20	77.9	58,520	84	95	33.5	5,960	66	75	59.2	8,160	126			
	25	74.2	42,190	82	100	28.5	5,450	58	80	56.8	7,320	123			
	30	70.5	32,780	81	105	22.4	4,990	47	85	54.3	6,570	119			
	35	66.6	26,560	79	110	14.0	4,580	32	90	51.7	5,920	115			
	40	62.7	22,180	76	120' (36.6M)	23	80.5	46,830	124	95	49.1	5,340	111		
	45	58.6	19,010	74		25	79.6	41,420	123	100	46.3	4,830	107		
	50	54.3	16,500	70		30	77.1	32,040	122	105	43.4	4,360	102		
55	49.7	14,490	66	35		74.7	25,780	121	110	40.3	3,940	96			
60	44.8	12,860	62	40		72.2	21,370	120	115	37.1	3,560	90			
65	39.5	11,510	56	45		69.7	18,250	118	120	33.5	3,220	83			
70	33.5	10,370	50	50		67.1	15,720	116	125	29.6	2,910	75			
75	26.3	9,390	41	55		64.5	13,720	114	130	25.2	2,630	65			
80	16.5	8,560	28	60	61.8	12,070	111	135	19.8	2,360	53				
90' (27.4M)	18	80.6	68,630	94	65	59.0	10,720	108	140	12.4	1,980*	36			
	20	79.3	58,360	94	70	56.2	9,570	105	150' (45.7M)	27	80.9	36,640	154		
	25	76.0	41,990	93	75	53.3	8,580	102		30	79.7	31,430	153		
	30	72.7	32,580	91	80	50.3	7,740	98		35	77.8	25,150	152		
	35	69.4	26,360	90	85	47.1	7,010	93		40	75.8	20,730	151		
	40	65.9	21,960	88						45	73.8	17,650	149		
										50	71.8	15,110	148		

LIFT RATINGS IN POUNDS (continued)

With 46HI Angle Boom, 3 Sheave Tip, 39,000 Pound Counterweight

Boom Length	Radius (Feet)	Boom Angle (Degrees)	Side Frames Extended (Pounds)	From Boom Pt. to Ground (Feet)	Boom Length	Radius (Feet)	Boom Angle (Degrees)	Side Frames Extended (Pounds)	From Boom Pt. to Ground (Feet)	Boom Length	Radius (Feet)	Boom Angle (Degrees)	Side Frames Extended (Pounds)	From Boom Pt. to Ground (Feet)
150' (con't)	55	69.8	13,080	146	150' (con't)	135	28.6	2,120	77	160' (con't)	80	61.3	6,900	146
	60	67.8	11,440	144		140	24.3	1,880	67		85	59.3	6,160	143
	65	65.7	10,080	142		145	19.1	1,660	55		90	57.2	5,500	140
	70	63.6	8,920	140		150	12.0	1,080*	37		95	55.0	4,920	137
	75	61.4	7,940	137	160' (48.8M)	29	80.7	32,830	163		100	52.8	4,400	133
	80	59.2	7,090	134		30	80.4	31,240	163		105	50.5	3,940	129
	85	57.0	6,340	131		35	78.6	24,960	162		110	48.2	3,520	125
	90	54.7	5,700	128		40	76.7	20,540	161		115	45.7	3,140	120
	95	52.3	5,110	124		45	74.9	17,460	160		120	43.2	2,800	115
	100	49.8	4,600	120		50	73.0	14,920	158		125	40.5	2,470	109
	105	47.3	4,130	116		55	71.1	12,900	157		130	37.6	2,180	103
	110	44.7	3,710	111		60	69.2	11,250	155		135	34.6	1,920	96
	115	41.9	3,340	106		65	67.3	9,880	153		140	31.3	1,670	89
	120	38.9	2,990	100		70	65.3	8,740	151		145	27.7	1,450	80
125	35.8	2,680	93	75	63.4	7,750	148	150	23.5	1,240	69			
130	32.3	2,390	86											

LIFT RATINGS IN POUNDS

With 46HI Angle Boom, #9 Angle Jib and 39,000 Pound Counterweight

Boom and Jib Length	Jib Radius (Feet)	5.0 Deg Offset		15.0 Deg Offset		25.0 Deg Offset		Boom and Jib Length	Jib Radius (Feet)	5.0 Deg Offset		15.0 Deg Offset		25.0 Deg Offset	
		Boom Angle	Ratings (Pounds)	Boom Angle	Ratings (Pounds)	Boom Angle	Ratings (Pounds)			Boom Angle	Ratings (Pounds)	Boom Angle	Ratings (Pounds)	Boom Angle	Ratings (Pounds)
20' (6.1M) JIB & 50' (15.2M) BOOM	17	80.4	18,250*					20' (6.1M) JIB & 100' (30.5M) BOOM	25	80.5	18,250*				
	20	77.9	18,250*	80.6	18,250*				30	78.1	18,250*	79.7	18,250*		
	25	73.8	18,250*	76.4	18,250*	78.9	18,250*		35	75.7	18,250*	77.3	18,250*	78.7	18,250*
	30	69.5	18,250*	72.1	18,250*	74.6	18,250*		40	73.3	18,250*	74.8	18,250*	76.2	18,250*
	35	65.1	18,250*	67.7	18,250*	70.1	18,250*		50	68.2	15,880	69.8	15,880	71.2	15,880
20' (6.1M) JIB & 60' (18.3M) BOOM	40	60.6	18,250*	63.2	18,250*	65.5	18,250*	60	63.0	12,240	64.5	12,240	65.9	12,240	
	50	50.7	17,050	53.2	17,060	55.3	17,060	70	57.6	9,740	59.0	9,740	60.3	9,740	
	18	80.8	18,250*					80	51.7	7,910	53.2	7,910	54.4	7,910	
	20	79.4	18,250*	78.1	18,250*	80.4	18,250*	90	45.4	6,520	46.8	6,520	47.9	6,520	
	25	75.8	18,250*	74.5	18,250*	76.6	18,250*	100	38.2	5,440	39.5	5,440	40.5	5,440	
20' (6.1M) JIB & 70' (21.3M) BOOM	30	72.1	18,250*	74.5	18,250*	76.6	18,250*	20' (6.1M) JIB & 110' (33.5M) BOOM	30	80.8	18,250*				
	35	68.4	18,250*	70.7	18,250*	72.8	18,250*	30	79.1	18,250*	80.5	18,250*			
	40	64.5	18,250*	66.8	18,250*	68.8	18,250*	35	76.8	18,250*	78.3	18,250*	79.6	18,250*	
	50	56.3	16,820	58.6	16,820	60.5	16,820	40	74.6	18,250*	76.0	18,250*	77.3	18,250*	
	60	47.3	13,180	49.4	13,180	51.1	13,180	50	70.0	15,650	71.4	15,650	72.7	15,650	
20' (6.1M) JIB & 80' (24.4M) BOOM	20	80.6	18,250*					60	65.2	11,990	66.6	11,990	67.9	12,000	
	25	77.4	18,250*	79.5	18,250*			70	60.3	9,490	61.7	9,490	62.9	9,490	
	30	74.2	18,250*	76.2	18,250*	78.2	18,250*	80	55.1	7,660	56.5	7,660	57.6	7,660	
	35	70.9	18,250*	72.9	18,250*	74.8	18,250*	90	49.6	6,270	50.9	6,270	51.9	6,270	
	40	67.5	18,250*	69.5	18,250*	71.4	18,250*	100	43.5	5,180	44.8	5,190	45.7	5,190	
20' (6.1M) JIB & 90' (27.4M) BOOM	50	60.5	16,560	62.5	16,560	64.2	16,560	110	36.6	4,310	37.8	4,310	38.7	4,320	
	60	52.9	12,920	54.8	12,920	56.5	12,920	20' (6.1M) JIB & 120' (36.6M) BOOM	28	80.7	18,250*				
	70	44.4	10,410	46.3	10,410	47.7	10,420	30	79.8	18,250*					
	21	80.9	18,250*					35	77.8	18,250*	79.1	18,250*	80.4	18,250*	
	25	78.7	18,250*	80.5	18,250*			40	75.7	18,250*	77.0	18,250*	78.3	18,250*	
20' (6.1M) JIB & 90' (27.4M) BOOM	30	75.8	18,250*	77.6	18,250*	79.4	18,250*	50	71.5	15,440	72.8	15,440	74.0	15,440	
	35	72.8	18,250*	74.7	18,250*	76.4	18,250*	60	67.1	11,790	68.4	11,790	69.6	11,790	
	40	69.8	18,250*	71.7	18,250*	73.4	18,250*	70	62.6	9,280	63.9	9,280	65.0	9,290	
	50	63.6	16,350	65.4	16,350	67.1	16,360	80	57.9	7,450	59.2	7,450	60.3	7,450	
	60	57.1	12,710	58.9	12,710	60.4	12,710	90	53.0	6,060	54.2	6,060	55.2	6,070	
20' (6.1M) JIB & 90' (27.4M) BOOM	70	50.0	10,210	51.7	10,210	53.1	10,220	100	47.7	4,970	48.9	4,980	49.8	4,980	
	80	42.0	8,400	43.6	8,400	44.9	8,400	110	41.8	4,100	43.0	4,100	43.9	4,100	
	23	80.7	18,250*					120	35.2	3,380	36.3	3,380	37.1	3,380	
	25	79.7	18,250*					20' (6.1M) JIB & 130' (39.6M) BOOM	29	80.9	18,250*				
	30	77.1	18,250*	78.8	18,250*	80.4	18,250*	30	80.5	18,250*					
20' (6.1M) JIB & 90' (27.4M) BOOM	35	74.4	18,250*	76.1	18,250*	77.7	18,250*	35	78.6	18,260*	79.9	18,250*			
	40	71.7	18,250*	73.4	18,250*	74.9	18,250*	40	76.7	18,250*	77.9	18,250*	79.1	18,250*	
	50	66.2	16,120	67.8	16,120	69.3	16,120	50	72.7	15,210	74.0	15,210	75.1	15,210	
	60	60.4	12,460	62.0	12,470	63.4	12,470	60	68.7	11,550	69.9	11,550	71.0	11,550	
	70	54.2	9,960	55.8	9,970	57.1	9,970	70	64.6	9,050	65.8	9,050	66.8	9,050	
20' (6.1M) JIB & 90' (27.4M) BOOM	80	47.5	8,150	49.0	8,150	50.3	8,150	80	60.3	7,220	61.5	7,220	62.5	7,220	
	90	40.0	6,760	41.4	6,760	42.5	6,760	90	55.8	5,820	57.0	5,830	57.9	5,830	

LIFT RATINGS IN POUNDS (continued)

With 46HI Angle Boom, #9 Angle Jib and 39,000 Pound Counterweight

Boom and Jib Length	Jib Radius (Feet)	5.0 Deg Offset		15.0 Deg Offset		25.0 Deg Offset	
		Boom Angle	Ratings (Pounds)	Boom Angle	Ratings (Pounds)	Boom Angle	Ratings (Pounds)
20' JIB (con't)	100	51.0	4,740	52.2	4,740	53.1	4,740
	110	46.0	3,850	47.1	3,850	47.9	3,850
	120	40.4	3,130	41.4	3,140	42.2	3,140
	130	34.0	2,530	35.0	2,530	35.7	2,540
20' (6.1M) JIB & 140' (42.7M) BOOM	31	80.7	18,250*				
	35	79.3	18,250*	80.5	18,250*	79.8	18,250*
	40	77.5	18,250*	78.7	18,250*	76.1	14,980
	50	73.8	14,980	75.0	14,980	76.1	14,980
	60	70.1	11,330	71.2	11,330	72.3	11,330
	70	66.2	8,810	67.4	8,810	68.4	8,810
	80	62.3	6,990	63.4	6,990	64.4	6,990
	90	58.2	5,600	59.3	5,600	60.2	5,600
	100	53.9	4,500	55.0	4,500	55.9	4,500
	110	49.3	3,620	50.4	3,620	51.2	3,620
	120	44.4	2,890	45.4	2,890	46.2	2,900
130	39.0	2,290	40.0	2,290	40.7	2,290	
140	32.9	1,780	33.8	1,780	34.4	1,780	
30' (9.1M) JIB & 80' (24.4M) BOOM	24	80.7	18,250*				
	25	80.1	18,250*				
	30	77.5	18,260*	80.1	18,250*		
	35	74.8	18,250*	77.4	18,250*	79.8	18,250*
	40	72.1	18,250*	74.7	18,250*	77.1	18,250*
	50	66.6	16,460	69.1	16,460	71.4	16,460
	60	60.8	12,810	63.3	12,820	65.5	12,820
	70	54.7	10,300	57.1	10,310	59.2	10,310
30' (9.1M) JIB & 90' (27.4) BOOM	25	80.9	18,250*				
	30	78.5	18,250*	80.9	18,250*		
	35	76.1	18,250*	78.5	18,250*	80.7	18,250*
	40	73.7	18,250*	76.0	18,250*	78.2	18,250*
	50	68.7	16,210	71.0	16,210	73.1	16,220
	60	63.4	12,560	65.7	12,560	67.8	12,560
	70	58.0	10,060	60.2	10,060	62.2	10,060
	80	52.1	8,230	54.3	8,230	56.2	8,230
90	45.8	6,840	47.9	6,840	49.6	6,840	
30' (9.1M) JIB & 100' (30.5M) BOOM	27	80.8	18,250*				
	30	79.4	18,250*				
	35	77.2	18,250*	79.4	18,250*		
	40	74.9	18,250*	77.1	18,250*	79.2	18,250*
	50	70.4	15,980	72.5	15,980	74.5	15,980
	60	65.6	12,320	67.7	12,320	69.7	12,330
	70	60.7	9,820	62.8	9,820	64.6	9,820
	80	55.5	7,990	57.5	7,990	59.3	7,990
	90	49.9	6,600	51.9	6,600	53.6	6,600
	100	43.9	5,510	45.8	5,520	47.3	5,520
	30' (9.1M) JIB & 110' (33.5M) BOOM	29	80.6	18,250*			
30		80.2	18,250*				
35		78.1	18,250*	80.2	18,250*		
40		76.0	18,250*	78.1	18,250*	80.0	18,250*
50		71.8	15,730	73.8	15,730	75.7	15,730
60		67.5	12,080	69.4	12,080	71.2	12,080
70		63.0	9,560	64.9	9,570	66.6	9,570
80		58.3	7,740	60.2	7,740	61.9	7,750
90		53.3	6,350	55.2	6,350	56.8	6,360
100		48.0	5,250	49.8	5,260	51.3	5,260
110		42.2	4,380	44.0	4,380	45.3	4,380
30' (9.1M) JIB & 120' (36.6M) BOOM	30	80.8	18,250*				
	35	78.9	18,250*	80.8	18,250*		
	40	77.0	18,250*	78.9	18,250*	80.6	18,250*
	50	73.0	15,520	74.9	15,520	76.7	15,520
	60	69.0	11,860	70.9	11,860	72.6	11,870
	70	64.9	9,360	66.7	9,360	68.4	9,360
	80	60.6	7,530	62.4	7,530	64.0	7,530
	90	56.1	6,130	57.9	6,140	59.4	6,140
	100	51.4	5,050	53.1	5,050	54.6	5,050
	110	46.3	4,160	48.0	4,160	49.3	4,160
	120	40.7	3,440	42.3	3,450	43.5	3,450

Boom and Jib Length	Jib Radius (Feet)	5.0 Deg Offset		15.0 Deg Offset		25.0 Deg Offset	
		Boom Angle	Ratings (Pounds)	Boom Angle	Ratings (Pounds)	Boom Angle	Ratings (Pounds)
30' (9.1M) JIB & 130' (39.6M) BOOM	32	80.7	18,250*				
	35	79.6	18,250*				
	40	77.8	18,250*	79.6	18,250*		
	50	74.1	15,280	75.9	15,280	77.5	15,290
	60	70.4	11,630	72.1	11,630	73.7	11,630
	70	66.6	9,110	68.3	9,110	69.8	9,120
	80	62.6	7,280	64.3	7,280	65.8	7,280
	90	58.5	5,890	60.2	5,890	61.6	5,890
	100	54.2	4,800	55.8	4,800	57.2	4,800
	110	49.6	3,910	51.2	3,910	52.6	3,910
	120	44.7	3,190	46.3	3,190	47.5	3,200
130	39.3	2,590	40.8	2,590	41.9	2,590	
40' (12.2M) JIB & 100' (30.5M) BOOM	29	80.9	18,250*				
	30	80.6	18,250*				
	35	78.6	18,250*				
	40	76.4	18,250*	79.1	18,250*		
	50	72.2	16,040	74.8	16,040	77.4	16,050
	60	67.8	12,390	70.5	12,390	72.9	12,390
	70	63.3	9,870	65.9	9,880	68.3	9,880
	80	58.6	8,040	61.2	8,040	63.5	8,050
90	53.7	6,650	56.2	6,650	58.4	6,660	
100	48.4	5,560	50.8	5,570	52.9	5,570	
40' (12.2M) JIB & 110' (33.5M) BOOM	31	80.8	18,250*				
	35	79.2	18,250*				
	40	77.3	18,250*	79.8	18,250*		
	50	73.4	15,790	75.9	16,790	78.2	15,790
	60	69.4	12,130	71.8	12,130	74.1	12,140
	70	65.2	9,620	67.7	9,620	69.9	9,620
	80	60.9	7,800	63.3	7,800	65.5	7,800
	90	56.4	6,390	58.8	6,400	60.9	6,400
100	51.7	5,310	54.0	5,310	56.0	5,310	
110	46.6	4,430	48.9	4,430	50.8	4,430	
40' (12.2M) JIB & 120' (36.6M) BOOM	33	80.6	18,250*				
	35	79.9	18,250*				
	40	78.1	18,250*	80.5	18,250*		
	50	74.4	15,570	76.8	15,570	79.0	15,580
	60	70.7	11,920	73.0	11,920	75.2	11,920
	70	66.9	9,400	69.2	9,400	71.3	9,410
	80	62.9	7,570	65.2	7,570	67.2	7,570
	90	58.8	6,180	61.0	6,180	63.0	6,180
	100	54.5	5,090	56.7	5,090	58.6	5,090
	110	49.9	4,210	52.1	4,210	53.9	4,210
	120	45.0	3,480	47.1	3,480	48.8	3,490
40' (12.2M) JIB & 130' (39.6M) BOOM	34	80.9	18,250*				
	35	80.5	18,250*				
	40	78.8	18,250*				
	50	75.4	15,340	77.6	15,340	79.7	15,340
	60	71.9	11,670	74.1	11,670	76.1	11,680
	70	68.3	9,160	70.5	9,160	72.5	9,160
	80	64.6	7,320	66.8	7,320	68.7	7,330
	90	60.8	5,930	62.9	5,930	64.8	5,940
	100	56.9	4,840	59.0	4,840	60.8	4,840
	110	52.7	3,960	54.8	3,960	56.6	3,970
	120	48.3	3,230	50.3	3,230	52.0	3,240
130	43.6	2,630	45.6	2,630	47.1	2,630	

MAXIMUM BOOM & JIB SELF-ERECTION DATA - 46HI BOOM

#9 JIB	Over The End & Over The Side	
	Boom Length (Ft.)	Jib Length (Ft.)
	160	0
150	0	
140	20	
130	40	

LOAD HOISTING INFORMATION (7/8" DIA. IPS WIRE ROPE)

Maximum Lifting Capacity (Pounds)	Minimum Parts of Line	Maximum Hoisting Dist. in Ft.	
		Main (Right)	Aux. (Left)
100,000	5	117	117
90,960	4	147	147
68,220	3	196	196
45,480	2	294	294
22,740	1	588	588

BOOM COMPOSITION CHART - 46 HI BOOM

Boom Length Feet	Boom Sections				
	20' 46HI Inner	10' 46HR Center	20' 46HR Center	40' 46HR Center	20' 46HR or 46 HI Outer
40	1	0	0	0	1
50	1	1	0	0	1
60	1	0	1	0	1
70	1	1	1	0	1
80	1	0	0	1	1
90	1	1	0	1	1
100	1	0	1	1	1
110	1	1	1	1	1
120	1	0	0	2	1
130	1	1	0	2	1
140	1	0	1	2	1
150	1	1	1	2	1
160	1	0	0	3	1

SPECIFICATIONS

Swing Speed	3.50 RPM
Travel Speed	1.00 MPH
Gradeability	40% (approximately 22°)

GROUND PRESSURE

Lifting crane with 40' 46HI boom, standard counterweight
30" (762 mm) Shoes 9.20 psi

#9 Angle Jib Composition

Jib Length Feet	10' Inner	10' Center	10' Outer
20	1	0	1
30	1	1	1
40	1	2	1

Note: The #9 jib mounted on a 46HI outer requires the use of a 46HI / #9 jib adaptor. Refer to the HC60 Operator's Manual for additional information.

HOIST DRUM PERFORMANCE

MAIN and AUXILIARY HOIST - 7/8" Diameter Rope					
Rope Layer	High Range		Low Range		Total Rope Length
	Line Speed (Feet per Minute)	Single Line Pull	Line Speed (Feet per Minute)	Single Line Pull	
1st*	337.61	24,250	258.21	32,410	81
2nd*	365.18	22,490	279.21	29,980	174
3rd*	393.06	20,940	300.54	27,780	268
4th*	420.62	19,620	321.87	26,010	375
5th*	448.51	18,300	342.86	24,470	483
6th*	476.07	17,200	364.19	22,930	604
7th*	503.96	16,310	385.52	21,610	725
8th*	531.52	15,430	406.52	20,500	860
9th**	559.41	14,770	427.84	19,620	994
10th**	586.97	14,110	449.17	18,520	1,043

* = Working Layers • ** = Storage Layers

**Single Line Pull reflects the maximum hydraulic capacity of the hoist unit at the given layer and range setting. The allowable single line pull may be limited by the strength of the hoist rope. See load hoisting table for rope limitations.

THIRD DRUM with FREE FALL - 3/4" Diameter Rope					
Rope Layer	High Range		Low Range		Total Rope Length
	Line Speed Feet Per Min.	Single Line Pull	Line Speed Feet Per Min.	Single Line Pull	
1st*	220	15,200	180	18,500	44
2nd*	235	13,955	195	16,980	93
3rd*	255	12,895	210	15,695	145
4th*	270	11,990	225	14,590	201
5th*	285	11,200	235	13,630	262
6th*	395	10,505	250	12,790	326
7th*	320	9,895	265	12,045	394
8th*	335	9,350	280	11,380	466
9th**	355	8,865	290	10,790	543
10th**	370	8,425	305	10,255	623

CRANE RATING DATA

⚠ WARNING

This rating chart is invalid if the crane has been modified or altered by use of other than GENUINE AMERICAN PARTS as such modifications or alterations may affect its capacity or safe operation. See American Crane Corporation Service Bulletin #259.

The ratings in this chart are for planning purposes only. Only those ratings specifically assigned to a crane and mounted in the operator's cab or in the Operator's Manual should be used for actual operation.

Ratings in this chart are in POUNDS and do not exceed the percentage of tipping specified for this crane by ANSI B30.5. All ratings require that the crane be standing level on a firm uniformly supporting surface.

Do not lift loads in excess of those shown on this chart. Lifting loads in excess of those shown or operation not in accordance with good operating practice, including limitations shown on page 3499 of Operator's Manual, can cause tipping, structural damage or catastrophic failure.

Asterisk (*) areas on this chart indicate ratings which are limited by strength of material or factors other than stability (tipping).

RADIUS IN FEET is the horizontal distance at ground level from the crane centerline of rotation to a vertical line through the center of gravity of the suspended load.

When using the main boom fall with jib in place, the main fall ratings must be reduced by the jib effective weight shown on the jib rating chart plus twice the weight of all suspended blocks, slings, rope, etc., at the jib fall.

When using the main boom fall with boom tip extension in place, the main fall ratings must be reduced by the weight of the boom tip extension plus twice the weight of all suspended blocks, slings, rope, etc., at the boom tip extension fall.

Blocks, slings, buckets and other load carrying devices are considered part of the load. The weight of standard hoisting ropes for the rating at a given radius has been calculated as part of the boom point load and need not be considered in determining net allowable loads.

Ratings shown on this chart make no allowance for such factors as out of plumb loads, wind, poor soil conditions, improper inflation of rubber tires and dynamic effects due to excessive operating speeds. The user (operator) must exercise judgement to make allowance for these conditions. See page 3499 of Operator's Manual for detailed information.

No account is taken of the wind force on the load. This effect, which can be substantial for loads with large surface areas, must be considered by the user. In any wind it is strongly recommended that taglines be used to control the load.

BOOM HOIST LINE is 12 parts of 5/8 inch diameter EIPS wire rope with a minimum breaking strength of 41,200 pounds.

PENDANT SUSPENSION LINE is 2 parts of 1-1/4 inch diameter MONOLAY wire rope with a minimum breaking strength of 172,800 pounds.

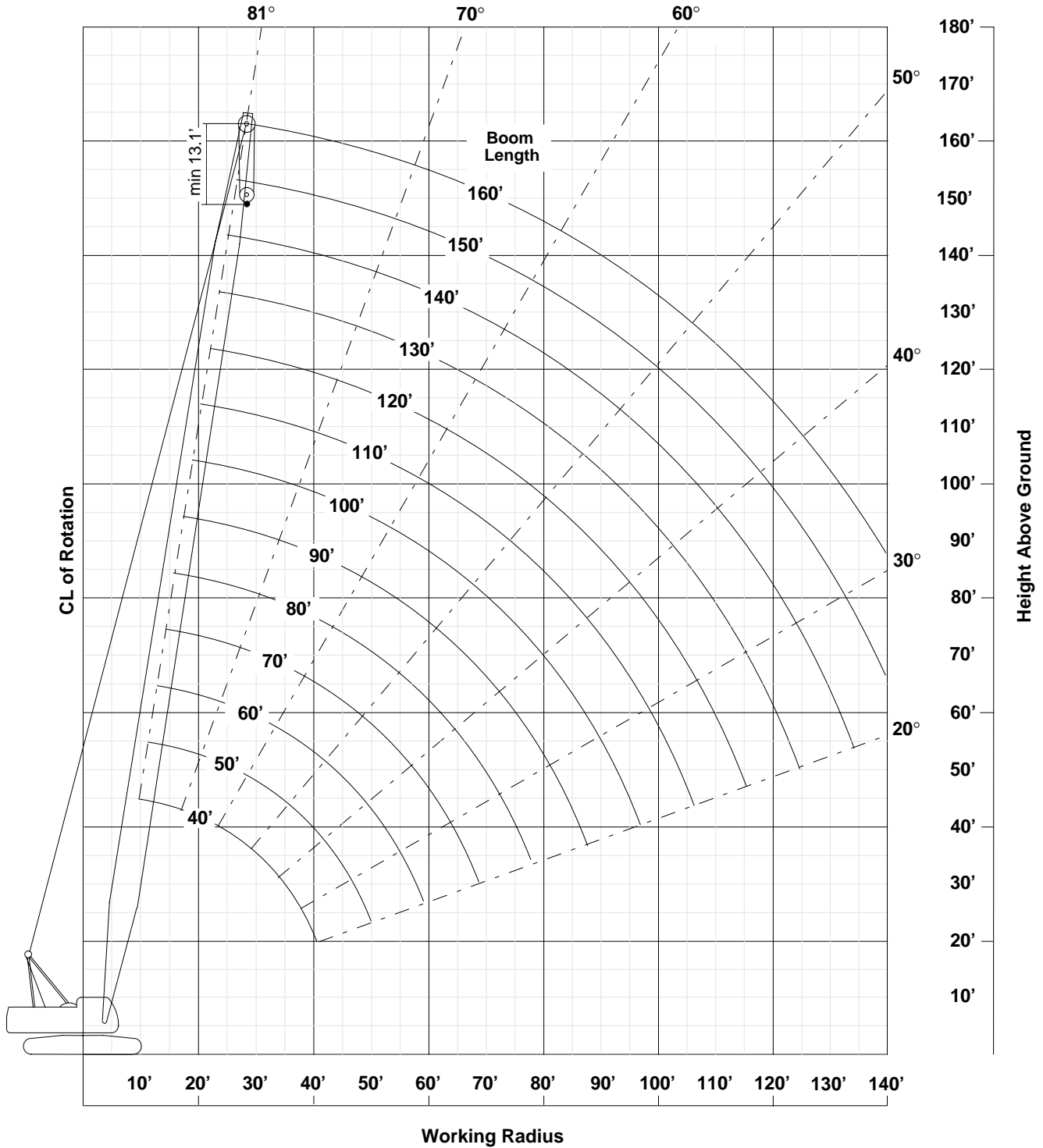
MAIN LOAD LINE is 7/8 inch diameter EIPS wire rope with a minimum breaking strength of 79,600 pounds.

WHIP LINE is 7/8 inch diameter IPS wire rope with a minimum breaking strength of 69,200 pounds.

ERECTION

Erection is with the A-Frame fully raised. Erection "OVER THE END" is with the boom over the idler end. Erection "OVER THE SIDE" is with the boom 90° to the sideframes and with the side frames extended. Blocks, slings and other load carrying devices must be on the ground during erection.

AMERICAN MODEL HC 50 WORKING RANGES WITH 46HI BOOM



For more information, product demonstration, or details on sales, lease and rental plans, please contact your local Terex American Crane Distributor.

We reserve the right to amend these specifications at any time without notice. The only warranty applicable is our standard written warranty applicable to the particular product and sale. We make no other warranty, expressed or implied.

 **TEREX CRANES**

AMERICAN CRANE CORPORATION
 202 Raleigh Street
 Wilmington, NC 28412 USA
 (910) 395-8500 • FAX: (910) 395-8538
 E-mail: american@american-crane.com

www.terexlift.com