



AMERICAN Model 9320 900 Series Crawler Crane

LIFTING

Lift Crane Ratings In Pounds with 92HT Tubular Chord Boom and "T-T" Counterweight (140,000 lbs.)

Boom Length (Feet)	Radius In Feet	Boom Angle Degrees	Lift Rating In Pounds	Feet From Boom Point To Ground	Boom Length (Feet)	Radius In Feet	Boom Angle Degrees	Lift Rating In Pounds	Feet From Boom Point To Ground	Boom Length (Feet)	Radius In Feet	Boom Angle Degrees	Lift Rating In Pounds	Feet From Boom Point To Ground
70 feet	17	81.4	500,000*	76	130 feet	25	81.8	320,990	135	170 feet (cont.)	90	60.5	46,210	154
	20	78.9	425,480*	75		30	79.6	235,880	134		100	56.6	39,750	148
	25	74.7	324,680	74		35	77.4	184,420	133		110	52.4	34,320	141
	30	70.4	237,130	72		40	75.1	150,750	132		120	48.0	29,890	132
	35	65.9	185,910	70		50	70.4	109,190	129		130	43.2	26,190	122
	40	61.3	152,340	67		60	65.7	84,390	125		140	38.0	23,060	110
	50	51.3	110,890	61		70	60.7	68,230	119		150	32.0	20,380	96
	60	39.5	86,230	50		80	55.5	56,560	113		160	24.8	18,060	77
70	23.2	69,960	33	90		49.9	47,840	105	170		14.5	16,030	48	
80 feet	18	81.8	475,930*	86		100	43.8	41,060	96		180 feet	32	81.9	210,500
	20	80.3	424,920*	85	110	36.8	35,830	84	35	80.9		182,660	184	
	25	76.6	324,160*	84	120	28.5	31,390	68	40	79.3		148,930	183	
	30	72.9	237,060	83	130	16.7	27,670	43	50	76.0		107,270	181	
	35	69.1	185,760	81	140 feet	27	81.6	281,750	145	60		72.7	82,340	178
	40	65.2	152,150	79		30	80.4	235,510	145	70		69.3	66,240	175
	50	56.9	110,660	73		35	78.3	184,010	144	80		65.9	54,520	170
	60	47.7	85,970	65		40	76.2	150,330	142	90		62.3	45,770	166
70	36.8	69,720	54	50		71.9	108,740	139	100	58.6		39,320	160	
80	21.6	58,050	35	60		67.5	83,900	136	110	54.8		33,880	153	
90 feet	20	81.4	424,090*	96		70	63.0	67,760	131	120	50.8	29,440	145	
	25	78.2	323,320*	95		80	58.3	56,080	125	130	46.5	25,740	136	
	30	74.9	236,770	93		90	53.3	47,350	118	140	41.9	22,610	126	
	35	71.5	185,430	92		100	47.9	40,570	110	150	36.9	19,930	114	
	40	68.1	151,810	90	110	42.1	35,380	99	160	31.1	17,610	98		
	50	61.0	110,300	85	120	35.4	30,940	87	170	24.1	15,570	79		
	60	53.3	85,580	78	130	27.4	27,220	70	180	14.1	13,770	49		
	70	44.8	69,350	69	150 feet	28	81.8	264,200	155	190 feet	33	82.0	200,260	195
	80	34.6	57,700	57		30	81.0	235,260	155		35	81.4	182,250	194
	90	20.3	48,970	37		35	79.1	183,700	154		40	79.9	148,510	194
100 feet	21	81.7	398,300	106		40	77.1	149,980	153		50	76.8	106,810	191
	25	79.4	322,610	105		50	73.1	108,340	150		60	73.6	81,850	189
	30	76.4	236,550	104		60	69.1	83,470	146		70	70.5	65,750	185
	35	73.4	185,150	102		70	64.9	67,330	142		80	67.2	54,020	181
	40	70.4	151,500	101		80	60.6	55,620	137		90	63.9	45,250	177
	50	64.2	109,950	96		90	56.1	46,880	130		100	60.5	38,840	171
	60	57.5	85,190	90		100	51.3	40,360	123		110	56.9	33,390	165
	70	50.4	68,970	83	110	46.2	34,920	114	120	53.2	28,950	158		
	80	42.3	57,310	73	120	40.6	30,480	103	130	49.3	25,250	150		
	90	32.7	48,580	60	130	34.2	26,770	90	140	45.2	22,120	141		
100	19.2	41,800	38	140	26.5	23,630	72	150	40.7	19,440	130			
110 feet	22	81.9	375,480	115	150	15.5	20,930	45	160	35.8	17,110	117		
	25	80.3	321,860	114	160 feet	29	81.9	248,500	165	170	30.2	15,070	101	
	30	77.7	236,290	114		30	81.6	235,000	165	180	23.4	13,280	81	
	35	75.0	184,830	113		35	79.8	183,370	164	190	13.7	11,690	50	
	40	72.3	151,150	111		40	77.9	149,610	163	200 feet	35	81.8	181,950	205
	50	66.7	109,560	107		50	74.2	107,930	160		40	80.4	148,160	204
	60	60.8	84,770	102		60	70.5	83,020	157		50	77.4	106,420	202
	70	54.6	68,560	96		70	66.6	66,880	153		60	74.5	81,420	199
	80	47.9	56,880	87		80	62.6	55,150	148		70	71.5	65,320	196
	90	40.2	48,150	77		90	58.5	46,400	142		80	68.4	53,560	192
100	31.1	41,370	62	100		54.1	39,890	136	90		65.3	44,780	188	
110	18.3	36,030	40	110	49.6	34,450	128	100	62.1		38,370	183		
120 feet	24	81.6	337,760*	125	120	44.6	30,000	118	110		58.8	32,920	177	
	25	81.1	321,660*	125	130	39.2	26,290	107	120		55.4	28,470	170	
	30	78.7	236,060	124	140	33.0	23,150	93	130	51.8	24,770	163		
	35	76.3	184,670	123	150	25.6	20,460	75	140	48.0	21,630	154		
	40	73.8	151,050	122	160	15.0	18,120	47	150	44.0	18,950	145		
	50	68.7	109,540	118	170 feet	31	81.7	222,010	175	160	39.7	16,620	133	
	60	63.5	84,780	114		35	80.4	182,920	174	170	34.9	14,590	120	
	70	58.0	68,630	108		40	78.6	149,240	173	180	29.4	12,790	104	
	80	52.1	56,970	101		50	75.2	107,630	171	190	22.8	11,190	83	
	90	45.7	48,250	92		60	71.6	82,750	168	200	13.4	9,770	52	
100	38.4	41,500	80	70		68.1	66,650	164	210 feet	36	81.9	173,680	215	
110	29.7	36,230	65	80		64.4	54,950	159		40	80.8	147,820	214	
120	17.4	31,770	41						50	78.1	106,020	212		

Lift Crane Ratings In Pounds

with 92HT Tubular Chord Boom and "T-T" Counterweight (140,000 lbs.)

Boom Length (Feet)	Radius In Feet	Boom Angle Degrees	Lift Rating In Pounds	Feet From Boom Point To Ground	Boom Length (Feet)	Radius In Feet	Boom Angle Degrees	Lift Rating In Pounds	Feet From Boom Point To Ground	Boom Length (Feet)	Radius In Feet	Boom Angle Degrees	Lift Rating In Pounds	Feet From Boom Point To Ground
210 feet (cont.)	60	75.2	80,970	210	230 feet (cont.)	190	36.9	10,000	144	260 feet (cont.)	100	68.9	35,790	249
	70	72.4	64,870	207		200	32.4	8,580	129		110	66.5	30,310	245
	80	69.5	53,090	203		210	27.4	7,300	111		120	64.1	25,830	240
	90	66.6	44,290	199		220	21.2	6,140	89		130	61.6	22,100	235
	100	63.5	37,900	194		230	12.4	5,100	55		140	59.1	18,950	229
	110	60.4	32,450	189		240 feet	40	82.0	132,330 *		244	150	56.4	16,250
	120	57.2	27,990	183	50		79.6	104,780	243		160	53.8	13,910	216
	130	53.9	24,280	176	60		77.1	80,240	240		170	51.0	11,870	208
	140	50.4	21,140	168	70		74.7	63,630	238		180	48.1	10,070	199
	150	46.8	18,450	159	80		72.2	51,840	235		190	45.0	8,470	190
	160	42.9	16,120	149	90		69.6	43,030	231		200	41.8	7,040	179
	220 feet	170	38.6	14,080	137	100	67.1	36,710	227		210	38.3	5,760	167
180		34.0	12,280	123	110	64.4	31,250	223	220	34.6	4,600	153		
190		28.7	10,690	106	120	61.7	26,780	218	270 feet	45	81.8	95,570 *	274	
200		22.3	9,260	85	130	59.0	23,060	212		50	80.7	95,200 *	273	
210		13.0	7,980	53	140	56.1	19,930	205		60	78.6	78,970	271	
230 feet		38	81.8	152,560 *	224	150	53.2	17,240		198	70	76.4	62,340	269
		40	81.3	147,300	224	160	50.1	14,910		190	80	74.2	50,520	266
		50	78.6	105,590	222	170	46.9	12,870		181	90	72.0	41,690	263
		60	75.9	80,580	220	180	43.6	11,080		171	100	69.7	35,430	260
		70	73.2	64,530	217	190	39.9	9,480		160	110	67.4	29,960	256
		80	70.5	52,760	214	200	36.0	8,060		147	120	65.1	25,490	251
		90	67.7	43,980	210	210	31.7	6,780		132	130	62.8	21,770	246
	100	64.8	37,630	205	220	26.8	5,630	114		140	60.3	18,630	241	
	110	61.9	32,180	200	230	20.8	4,590	91		150	57.9	15,940	235	
	120	58.9	27,730	194	250 feet	42	81.9	120,120 *	254	160	55.3	13,610	228	
	130	55.8	24,030	188		50	80.0	104,400	253	170	52.7	11,570	221	
	140	52.6	20,900	181		60	77.6	79,830	251	180	49.9	9,770	212	
150	49.2	18,220	172	70		75.3	63,200	248	190	47.1	8,180	204		
160	45.6	15,890	163	80		72.9	51,380	245	200	44.1	6,760	194		
170	41.8	13,860	152	90		70.5	42,560	242	210	40.9	5,470	183		
180	37.7	12,070	140	100		68.0	36,250	238	220	37.6	4,320	170		
190	33.2	10,480	126	110		65.5	30,780	234	280 feet	46	81.9	87,590 *	284	
200	28.0	9,060	109	120		63.0	26,300	229		50	81.1	87,250 *	283	
210	21.7	7,790	87	130		60.4	22,590	223		60	79.0	78,600	281	
220	12.7	6,640	54	140		57.7	19,440	217		70	76.9	61,940	279	
240 feet	39	81.9	138,380 *	234		150	54.9	16,750		211	80	74.8	50,100	277
	40	81.6	138,380 *	234	160	52.1	14,410	203		90	72.6	41,250	274	
	50	79.1	105,230	232	170	49.1	12,380	195		100	70.5	35,000	270	
	60	76.6	80,180	230	180	45.9	10,580	185		110	68.3	29,520	266	
	70	74.0	64,120	227	190	42.6	8,990	175		120	66.1	25,050	262	
	80	71.4	52,330	224	200	39.1	7,560	163		130	63.8	21,320	257	
	90	68.7	43,530	221	210	35.3	6,280	150		140	61.5	18,170	252	
	100	66.0	37,190	216	220	31.1	5,110	134		150	59.1	15,470	246	
	110	63.2	31,730	211	230	26.2	4,070	116	160	56.7	13,140	240		
	120	60.4	27,280	206	260 feet	43	81.9	109,260 *	264	170	54.2	11,090	233	
	130	57.5	23,570	200		50	80.4	104,010	263	180	51.6	9,290	225	
	140	54.4	20,440	193		60	78.1	79,420	261	190	49.0	7,700	217	
150	51.3	17,740	185	70		75.9	62,760	259	200	46.2	6,270	208		
160	48.0	15,420	177	80		73.6	50,920	256	210	43.3	4,990	198		
170	44.6	13,390	167	90		71.3	42,080	253						

Lift Crane Ratings In Kilograms

with 92HT Tubular Chord Boom and "T-T" Counterweight (63,504 kgs.)

Boom Length (Meters)	Radius In Meters	Boom Angle Degrees	Lift Rating In Kilograms	Meters From Boom Point To Ground	Boom Length (Meters)	Radius In Meters	Boom Angle Degrees	Lift Rating In Kilograms	Meters From Boom Point To Ground	Boom Length (Meters)	Radius In Meters	Boom Angle Degrees	Lift Rating In Kilograms	Meters From Boom Point To Ground
21.3 meters	5.2	81.4	226,800 *	23	24.4 meters (cont.)	12.0	65.7	70,650	24	27.4 meters (cont.)	18.0	54.1	39,680	24
	6.0	79.2	196,710 *	23		13.0	63.1	62,850	24		19.0	51.4	36,890	23
	7.0	76.4	163,050 *	23		14.0	60.4	56,520	23		20.0	48.7	34,380	22
	8.0	73.6	134,910	22		15.0	57.6	51,320	22		21.0	45.8	32,150	21
	9.0	70.8	110,410	22		16.0	54.7	46,900	22		22.0	42.7	30,150	20
	10.0	67.9	93,170	22		17.0	51.7	43,120	21		24.0	36.0	26,750	18
	11.0	64.9	80,480	21	18.0	48.6	39,860	20	26.0		27.9	23,940	15	
	12.0	61.9	70,730	21	19.0	45.4	37,010	19	30.5 meters		6.4	81.7	180,660 *	32
	13.0	58.8	62,950	20	20.0	41.9	34,550	18			7.0	80.6	162,070 *	32
	14.0	55.5	56,620	19	21.0	38.1	32,320	17			8.0	78.6	134,700	32
	15.0	52.1	51,420	19	22.0	34.1	30,330	15			9.0	76.7	110,160	32
	16.0	48.6	47,010	18	24.0	24.0	26,920	12			10.0	74.8	92,830	31
17.0	44.8	43,230	17	27.4 meters	6.1	81.4	192,370 *	29		11.0	72.8	80,120	31	
18.0	40.8	39,970	16		7.0	79.5	162,390 *	29		12.0	70.8	70,360	31	
19.0	36.3	37,130	14		8.0	77.3	134,780	29		13.0	68.8	62,540	30	
20.0	31.4	34,660	13		9.0	75.2	110,250	29		14.0	66.7	56,180	30	
21.0	25.5	32,420	11		10.0	73.0	92,950	28		15.0	64.7	51,000	29	
24.4 meters	5.5	81.8	215,880 *		26	11.0	70.8	80,250		28	16.0	62.6	46,560	29
	6.0	80.5	196,450 *	26	12.0	68.6	70,500	27		17.0	60.4	42,780	28	
	7.0	78.1	162,790 *	26	13.0	66.3	62,680	27	18.0	58.2	39,510	28		
	8.0	75.7	134,900	26	14.0	63.9	56,340	27	19.0	55.9	36,730	27		
	9.0	73.3	110,380	25	15.0	61.6	51,170	26	20.0	53.6	34,210	26		
	10.0	70.8	93,110	25	16.0	59.2	46,730	25	21.0	51.2	31,980	26		
11.0	68.3	80,410	25	17.0	56.7	42,950	25	22.0	48.7	29,980	25			

Lift Crane Ratings In Kilograms

with 92HT Tubular Chord Boom and "T-T" Counterweight (63,504 kgs.)

Boom Length (Meters)	Radius In Meters	Boom Angle Degrees	Lift Rating In Kilograms	Meters From Boom Point To Ground	Boom Length (Meters)	Radius In Meters	Boom Angle Degrees	Lift Rating In Kilograms	Meters From Boom Point To Ground	Boom Length (Meters)	Radius In Meters	Boom Angle Degrees	Lift Rating In Kilograms	Meters From Boom Point To Ground				
30.5 meters (cont.)	24.0	43.4	26,580	23	42.7 meters (cont.)	24.0	58.9	26,020	38	51.8 meters (cont.)	42.0	39.2	10,760	34				
	26.0	37.5	23,770	20		26.0	55.6	23,210	37		44.0	35.5	9,910	32				
	28.0	30.6	21,410	17		28.0	52.3	20,850	36		46.0	31.4	9,150	29				
	30.0	21.9	19,400	13		30.0	48.8	18,840	34		48.0	26.8	8,450	25				
33.5 meters	6.7	81.9	170,310 *	35		32.0	45.1	17,210	32	50.0	21.3	7,800	20	54.9 meters	9.8	81.9	95,480	56
	7.0	81.4	161,720 *	35		34.0	41.1	15,710	30	10.0	81.6	91,680	56					
	8.0	79.7	134,620	35		36.0	36.8	14,380	27	11.0	80.6	78,950	56					
	9.0	77.9	110,040	35		38.0	31.9	13,210	24	12.0	79.5	69,210	56					
	10.0	76.2	92,690	35		40.0	26.3	12,160	21	13.0	78.4	61,320	56					
	11.0	74.4	79,960	34		42.0	19.2	11,220	16	14.0	77.4	54,920	56					
	12.0	72.6	70,200	34		8.5	81.8	119,840	47	15.0	76.3	49,800	55					
	13.0	70.8	62,370	34		9.0	81.2	109,590	47	16.0	75.2	45,330	55					
	14.0	69.0	56,010	33	10.0	79.9	92,170	47	17.0	74.1	41,520	55						
	15.0	67.1	50,830	33	11.0	78.6	79,430	47	18.0	73.0	38,220	54						
	16.0	65.2	46,390	32	12.0	77.4	69,680	47	19.0	71.9	35,520	54						
	17.0	63.3	42,590	32	13.0	76.1	61,810	46	20.0	70.8	32,990	54						
	18.0	61.4	39,310	31	14.0	74.8	55,430	46	21.0	69.7	30,740	53						
	19.0	59.4	36,550	31	15.0	73.5	50,280	46	22.0	68.6	28,740	53						
	20.0	57.4	34,030	30	16.0	72.1	45,820	45	24.0	66.3	25,310	52						
	21.0	55.3	31,790	29	17.0	70.8	42,020	45	26.0	64.0	22,490	51						
	22.0	53.2	29,800	29	18.0	69.5	38,730	45	28.0	61.6	20,130	50						
	24.0	48.7	26,390	27	19.0	68.1	36,000	44	30.0	59.2	18,280	49						
26.0	43.9	23,570	25	20.0	66.8	33,480	44	32.0	56.8	16,540	48							
28.0	38.7	21,210	23	21.0	65.4	31,230	43	34.0	54.2	15,030	46							
30.0	32.7	19,200	20	22.0	64.0	29,240	43	36.0	51.6	13,710	45							
32.0	25.5	17,520	16	24.0	61.2	25,810	42	38.0	48.8	12,540	43							
36.6 meters	7.3	81.6	153,200 *	38	26.0	58.2	22,990	41	40.0	46.0	11,490	41	57.9 meters	10.1	82.0	90,830	59	
	8.0	80.6	134,470	38	28.0	55.2	20,630	39	11.0	81.1	78,770	59						
	9.0	78.9	109,940	38	30.0	52.1	18,620	38	12.0	80.1	69,020	59						
	10.0	77.4	92,600	38	32.0	48.8	17,010	36	13.0	79.0	61,120	59						
	11.0	75.7	79,900	37	34.0	45.4	15,510	34	14.0	78.0	54,900	59						
	12.0	74.1	70,150	37	36.0	41.7	14,170	32	15.0	77.0	49,590	58						
	13.0	72.5	62,330	37	38.0	37.7	13,000	30	16.0	76.0	45,120	58						
	14.0	70.8	55,970	37	40.0	33.3	11,950	27	17.0	75.0	41,290	58						
	15.0	69.1	50,820	36	42.0	28.3	11,010	23	18.0	73.9	38,000	58						
	16.0	67.4	46,380	36	44.0	22.4	10,160	19	19.0	72.9	35,310	57						
	18.0	64.0	39,310	35	8.8	81.9	112,710	50	20.0	71.9	32,770	57						
	19.0	62.2	36,570	34	9.0	81.7	109,480	50	21.0	70.8	30,520	57						
	20.0	60.4	34,050	34	10.0	80.6	92,020	50	22.0	69.8	28,520	56						
	21.0	58.6	31,830	33	11.0	79.4	79,280	50	24.0	67.6	25,090	55						
	22.0	56.7	29,830	32	12.0	78.2	69,520	50	26.0	65.5	22,270	55						
	24.0	52.8	26,420	31	13.0	76.9	61,640	50	28.0	63.3	19,890	54						
	26.0	48.8	23,610	29	14.0	75.7	55,240	49	30.0	61.0	18,050	53						
	28.0	44.4	21,260	27	15.0	74.5	50,100	49	32.0	58.7	16,320	51						
30.0	39.6	19,260	25	16.0	73.3	45,630	49	34.0	56.4	14,810	50							
32.0	34.4	17,610	22	17.0	72.1	41,810	48	36.0	53.9	13,490	49							
34.0	28.2	16,100	19	18.0	70.8	38,530	48	38.0	51.4	12,310	47							
36.0	20.3	14,770	14	19.0	69.6	35,800	48	40.0	48.8	11,270	45							
39.6 meters	7.6	81.8	145,600 *	41	20.0	68.3	33,280	47	42.0	46.1	10,320	44	61.0 meters	10.7	81.8	82,530	62	
	8.0	81.3	134,410	41	21.0	67.0	31,030	47	11.0	81.5	78,620	62						
	9.0	79.8	109,860	41	22.0	65.7	29,020	46	12.0	80.6	68,860	62						
	10.0	78.3	92,490	41	24.0	63.1	25,600	45	13.0	79.6	60,950	62						
	11.0	76.9	79,770	41	26.0	60.4	22,780	44	14.0	78.6	54,740	62						
	12.0	75.4	70,030	40	28.0	57.7	20,410	43	15.0	77.7	49,410	62						
	13.0	73.9	62,180	40	30.0	54.8	18,400	42	16.0	76.7	44,940	61						
	14.0	72.3	55,810	40	32.0	51.9	16,800	40	17.0	75.7	41,110	61						
	15.0	70.8	50,670	39	34.0	48.8	15,290	39	18.0	74.8	37,800	61						
	16.0	69.3	46,220	39	36.0	45.6	13,960	37	19.0	73.8	35,120	61						
	17.0	67.7	42,420	39	38.0	42.2	12,790	35	20.0	72.8	32,580	60						
	18.0	66.1	39,140	38	40.0	38.5	11,730	32	21.0	71.8	30,330	60						
	19.0	64.5	36,400	38	42.0	34.5	10,790	29	22.0	70.8	28,320	60						
	20.0	62.9	33,880	37	44.0	30.0	9,940	26	24.0	68.8	24,880	59						
	21.0	61.3	31,650	37	46.0	24.8	9,180	22	26.0	66.8	22,050	58						
	22.0	59.6	29,660	36	48.0	18.3	8,480	17	28.0	64.7	19,680	57						
	24.0	56.1	26,230	35	9.4	81.7	100,710	53	30.0	62.6	17,850	56						
	26.0	52.6	23,420	33	10.0	81.1	91,800	53	32.0	60.5	16,100	55						
28.0	48.8	21,070	32	11.0	80.0	79,090	53	34.0	58.3	14,600	54							
30.0	44.8	19,060	30	12.0	78.9	69,340	53	36.0	56.0	13,260	52							
32.0	40.4	17,420	27	13.0	77.7	61,470	53	38.0	53.7	12,090	51							
34.0	35.7	15,920	25	14.0	76.6	55,080	52	40.0	51.3	11,040	49							
36.0	30.3	14,590	22	15.0	75.4	49,950	52											
38.0	23.7	13,410	18	16.0	74.3	45,500	52											
42.7 meters	8.2	81.6	127,800	44	17.0	73.1	41,690	52										
	9.0	80.6	109,700	44	18.0	72.0	38,400	51										
	10.0	79.2	92,300	44	19.0	70.8	35,690	51										
	11.0	77.8	79,590	44	20.0	69.6	33,170	51										
	12.0	76.4	69,830	43	21.0	68.4	30,930	50										
	13.0	75.0	61,990	43	22.0	67.3	28,930	50										
	14.0	73.6	55,610	43	24.0	64.8	25,510	49										
	15.0	72.2	50,460	43	26.0	62.3	22,690	48										
	16.0	70.8	46,010	42	28.0	59.8	20,330	47										
	17.0	69.4	42,210	42	30.0	57.2	18,320	45										
	18.0	67.9	38,920	41	32.0	54.5	16,730	44										
	19.0	66.5	36,190	41	34.0	51.7	15,230	43										
	20.0	65.0	33,670	41	36.0	48.8	13,900	41										
	21.0	63.5	31,430	40	38.0	45.8	12,740	39										
	22.0	62.0	29,430	40	40.0	42.6	11,690	37										

Lift Crane Ratings In Kilograms

with 92HT Tubular Chord Boom and "T-T" Counterweight (63,504 kgs.)

Boom Length (Meters)	Radius In Meters	Boom Angle Degrees	Lift Rating In Kilograms	Meters From Boom Point To Ground	Boom Length (Meters)	Radius In Meters	Boom Angle Degrees	Lift Rating In Kilograms	Meters From Boom Point To Ground	Boom Length (Meters)	Radius In Meters	Boom Angle Degrees	Lift Rating In Kilograms	Meters From Boom Point To Ground
61.0 meters (cont.)	42.0	48.9	10,110	48	70.1 meters	21.0	74.3	29,780	69	76.2 meters (cont.)	54.0	46.8	5,020	57
	44.0	46.3	9,260	46		22.0	73.4	27,760	69		56.0	44.7	4,520	55
	46.0	43.6	8,490	44		24.0	71.7	24,330	69		58.0	42.5	4,060	53
	48.0	40.8	7,790	42		26.0	70.0	21,480	68		60.0	40.3	3,630	51
	50.0	37.8	7,150	39		28.0	68.2	19,110	67		62.0	37.8	3,230	48
	52.0	34.6	6,560	36		30.0	66.4	17,320	66		64.0	35.3	2,850	46
	54.0	31.1	6,020	33		32.0	64.6	15,570	65		66.0	32.6	2,500	43
	56.0	27.1	5,520	30		34.0	62.8	14,050	64		68.0	29.6	2,170	39
	58.0	22.6	5,060	25		36.0	60.9	12,730	63		70.0	26.4	1,860	36
	60.0	16.9	4,630	19		38.0	59.0	11,550	62		79.2 meters	13.1	81.9	49,560 *
64.0 meters	11.0	81.9	78,780	65	40.0	57.1	10,500	61	14.0	81.3		49,560 *	80	
	12.0	81.0	68,710	65	42.0	55.1	9,560	59	15.0	80.6		48,330	80	
	13.0	80.1	60,790	65	44.0	53.1	8,710	58	16.0	79.8		43,820	80	
	14.0	79.2	54,570	65	46.0	51.0	7,950	56	17.0	79.1		39,960	80	
	15.0	78.3	49,230	65	48.0	48.9	7,250	55	18.0	78.4		36,640	80	
	16.0	77.4	44,740	64	50.0	46.6	6,610	53	19.0	77.6		33,990	79	
	17.0	76.4	40,920	64	52.0	44.3	6,020	51	20.0	76.9		31,440	79	
	18.0	75.5	37,600	64	54.0	41.9	5,480	49	21.0	76.1		29,180	79	
	19.0	74.6	34,920	64	56.0	39.4	4,970	46	22.0	75.4		27,150	79	
	20.0	73.6	32,390	63	58.0	36.7	4,510	44	24.0	73.9	23,680	78		
21.0	72.7	30,130	63	60.0	33.9	4,080	41	26.0	72.4	20,840	77			
22.0	71.8	28,110	63	62.0	30.8	3,680	38	28.0	70.8	18,540	77			
24.0	69.9	24,660	62	64.0	27.4	3,310	34	30.0	69.3	16,670	76			
26.0	67.9	21,830	61	66.0	23.5	2,960	30	32.0	67.7	14,920	75			
28.0	66.0	19,460	60	68.0	18.9	2,640	24	34.0	66.1	13,410	74			
30.0	64.0	17,640	59	70.0	12.8	2,340	17	36.0	64.6	12,070	73			
32.0	62.0	15,890	58	73.2 meters	12.2	82.0	60,020 *	74	38.0	62.9	10,880	72		
34.0	59.9	14,380	57		13.0	81.4	60,020 *	74	40.0	61.3	9,840	71		
36.0	57.8	13,050	56		14.0	80.6	54,020	74	42.0	59.6	8,890	70		
38.0	55.7	11,880	55		15.0	79.8	48,670	74	44.0	57.9	8,040	69		
40.0	53.5	10,820	53		16.0	79.0	44,180	74	46.0	56.2	7,270	68		
42.0	51.2	9,890	52		17.0	78.2	40,340	74	48.0	54.4	6,560	66		
44.0	48.9	9,030	50		18.0	77.4	37,020	73	50.0	52.6	5,920	65		
46.0	46.4	8,270	48		19.0	76.6	34,370	73	52.0	50.8	5,340	63		
48.0	43.9	7,570	46		20.0	75.7	31,830	73	54.0	48.9	4,790	62		
50.0	41.2	6,920	44		21.0	74.9	29,570	73	56.0	46.9	4,290	60		
52.0	38.4	6,330	41	22.0	74.1	27,550	72	58.0	44.9	3,820	58			
54.0	35.4	5,790	39	24.0	72.5	24,100	72	60.0	42.8	3,390	56			
56.0	32.1	5,290	36	26.0	70.8	21,260	71	62.0	40.6	2,990	53			
58.0	28.5	4,820	32	28.0	69.2	18,890	70	64.0	38.3	2,620	51			
60.0	24.4	4,400	28	30.0	67.5	17,090	70	66.0	35.9	2,260	48			
62.0	19.6	4,000	23	32.0	65.8	15,350	69	68.0	33.3	1,930	45			
64.0	13.1	3,620	16	34.0	64.0	13,830	68	82.3 meters	13.7	81.8	43,360 *	84		
67.1 meters	11.6	81.8	69,200 *	68	36.0	62.3	12,500		67	14.0	81.6	43,360 *	83	
	12.0	81.4	68,470	68	38.0	60.5	11,330		66	15.0	80.9	43,180 *	83	
	13.0	80.6	60,560	68	40.0	58.6	10,270		64	16.0	80.2	43,010 *	83	
	14.0	79.7	54,370	68	42.0	56.8	9,340		63	17.0	79.5	39,740	83	
	15.0	78.8	49,040	68	44.0	54.9	8,480		62	18.0	78.8	36,420	83	
	16.0	77.9	44,550	68	46.0	52.9	7,720		60	19.0	78.1	33,790	83	
	17.0	77.1	40,720	67	48.0	50.9	7,010		59	20.0	77.4	31,240	82	
	18.0	76.2	37,420	67	50.0	48.9	6,380		57	21.0	76.6	28,980	82	
	19.0	75.3	34,760	67	52.0	46.8	5,780		55	22.0	75.9	26,960	82	
	20.0	74.4	32,220	67	54.0	44.5	5,250	53	24.0	74.5	23,500	81		
21.0	73.5	29,960	66	56.0	42.3	4,750	51	26.0	73.0	20,650	81			
22.0	72.6	27,960	66	58.0	39.9	4,290	49	28.0	71.6	18,280	80			
24.0	70.8	24,520	65	60.0	37.3	3,860	46	30.0	70.1	16,510	79			
26.0	69.0	21,690	65	62.0	34.6	3,460	43	32.0	68.6	14,770	79			
28.0	67.1	19,310	64	64.0	31.7	3,080	40	34.0	67.1	13,250	78			
30.0	65.3	17,510	63	66.0	28.6	2,730	37	36.0	65.6	11,920	77			
32.0	63.4	15,770	62	68.0	25.1	2,400	33	38.0	64.0	10,740	76			
34.0	61.4	14,250	61	70.0	21.0	2,100	28	40.0	62.5	9,690	75			
36.0	59.5	12,930	60	72.0	16.0	1,810	22	42.0	60.9	8,750	74			
38.0	57.5	11,750	58	76.2 meter	12.8	81.9	54,490 *	77	44.0	59.3	7,890	73		
40.0	55.4	10,710	57		13.0	81.7	54,490 *	77	46.0	57.6	7,130	71		
42.0	53.3	9,770	56		14.0	80.9	53,860	77	48.0	55.9	6,420	70		
44.0	51.1	8,930	54		15.0	80.2	48,510	77	50.0	54.3	5,790	69		
46.0	48.9	8,160	52		16.0	79.4	44,000	77	52.0	52.5	5,190	67		
48.0	46.5	7,460	50		17.0	78.6	40,160	77	54.0	50.7	4,660	66		
50.0	44.1	6,820	48		18.0	77.9	36,830	77	56.0	48.9	4,150	64		
52.0	41.6	6,230	46		19.0	77.1	34,190	76	58.0	47.0	3,690	62		
54.0	38.9	5,690	44		20.0	76.3	31,640	76	60.0	45.1	3,260	60		
56.0	36.1	5,190	41		21.0	75.6	29,370	76	62.0	43.0	2,850	58		
58.0	33.1	4,730	38	22.0	74.8	27,350	76	64.0	40.9	2,480	56			
60.0	29.7	4,300	35	24.0	73.2	23,890	75	66.0	38.8	2,130	53			
62.0	26.0	3,910	31	26.0	71.6	21,050	74	68.0	36.5	1,810	51			
64.0	21.7	3,530	27	28.0	70.0	18,660	74	85.3 meters	14.0	81.9	39,730 *	87		
66.0	16.4	3,180	21	30.0	68.4	16,880	73		15.0	81.2	39,570 *	86		
70.1 meters	11.9	81.9	62,770 *	71	32.0	66.8	15,140		72	16.0	80.6	39,420 *	86	
	12.0	81.8	62,770 *	71	34.0	65.1	13,620		71	17.0	79.9	39,260 *	86	
	13.0	81.0	60,420	71	36.0	63.5	12,290		70	18.0	79.2	36,240	86	
	14.0	80.1	54,210	71	38.0	61.8	11,110		69	19.0	78.5	33,620	86	
	15.0	79.3	48,880	71	40.0	60.0	10,060		68	20.0	77.8	31,060	85	
	16.0	78.5	44,390	71	42.0	58.3	9,110		67	21.0	77.1	28,790	85	
	17.0	77.6	40,550	70	44.0	56.5	8,270		65	22.0	76.4	26,770	85	
	18.0	76.8	37,240	70	46.0	54.6	7,490		64	24.0	75.1	23,310	84	
	19.0	75.9	34,580	70	48.0	52.8	6,790	63	26.0	73.6	20,460	84		
	20.0	75.1	32,040	70	50.0	50.9	6,150	61	28.0	72.3	18,070	83		
				52.0	48.9	5,560	59							

Lift Crane Ratings In Kilograms with 92HT Tubular Chord Boom and “T-T” Counterweight (63,504 kgs.)

Boom Length (Meters)	Radius In Meters	Boom Angle Degrees	Lift Rating In Kilograms	Meters From Boom Point To Ground	Boom Length (Meters)	Radius In Meters	Boom Angle Degrees	Lift Rating In Kilograms	Meters From Boom Point To Ground	Boom Length (Meters)	Radius In Meters	Boom Angle Degrees	Lift Rating In Kilograms	Meters From Boom Point To Ground
85.3 meters (cont.)	30.0	70.8	16,320	83	85.3 meters (cont.)	44.0	60.5	7,680	76	85.3 meters (cont.)	58.0	48.9	3,480	66
	32.0	69.4	14,570	82		46.0	58.9	6,910	75		60.0	47.1	3,040	64
	34.0	67.9	13,040	81		48.0	57.3	6,210	74		62.0	45.2	2,640	62
	36.0	66.5	11,720	80		50.0	55.7	5,570	72		64.0	43.3	2,270	60
	38.0	65.0	10,530	79		52.0	54.1	4,980	71		66.0	41.3	1,910	58
	40.0	63.5	9,480	78		54.0	52.4	4,430	69					
42.0	62.0	8,540	77	56.0	50.7	3,940	68							

9320 SPECIFICATIONS

WARNING

The ratings in this chart are for planning purposes only. Only those ratings specifically assigned to a crane and mounted in the Operator’s Cab or in the Operator’s Manual should be used for actual operation.

This rating chart is invalid if the crane has been modified or altered by use of other than GENUINE AMERICAN PARTS as such modifications or alterations may affect its capacity or safe operation. See American Crane Corporation Service Bulletin #259.

Ratings in this chart are in POUNDS (Kgs) and do not exceed the percentage of tipping specified for this crane by ANSI B30.5. All ratings require that the crane be standing level on a firm uniformly supporting surface.

Do not lift loads in excess of those shown on this chart. Lifting loads in excess of those shown or operation not in accordance with good operating practice, including limitations shown on page 3499 of Operator’s Manual, can cause tipping, structural damage or catastrophic failure.

Asterisk (*) areas on this chart indicate ratings which are limited by strength of material or factors other than stability (tipping).

“RADIUS IN FEET” is the horizontal distance at ground level from the crane centerline of rotation to a vertical line through the center of gravity of the suspended load.

When using the main boom fall with boom tip extension in place, the main fall ratings must be reduced by the weight of the boom tip extension plus twice the weight of all suspended blocks, slings, rope, etc., at the boom tip extension fall.

Blocks, slings, buckets and other load carrying devices are considered part of the load. The weight of standard hoisting ropes for the rating at a given radius has been calculated as part of the boom point load and need not be considered in determining net allowable loads.

This chart was developed exclusively for use with a boom only. Under no circumstances are these ratings to be interpreted for use with a jib.

No account is taken of the wind force on the load. This effect, which can be substantial for loads with large surface areas, must be considered by the user. In any wind it is strongly recommended that taglines be used to control the load.

BOOM HOIST LINE is 14 parts of .875 inch (22 mm) diameter 6 x 26, WS, FW, RAL, IWRC, EIPS wire rope with a minimum breaking strength of 79,600 pounds (36,110 Kg).

BOOM PENDANT SUSPENSION is 4 parts of 1.375 inch (34.9 mm) diameter AAA wire rope with a minimum breaking strength of 211,000 pounds (95,710 Kg).

MAIN LOAD LINE is 1.125 inch (28.6 mm) diameter 6 x 25, FW, RRL, IWRC, super strength wire rope with a minimum breaking strength of 143,000 pounds (64,865 Kg).

Erection “OVER THE END” is with the boom over the idler end with idler tumblers blocked (See Operator’s Manual for blocking instructions). Erection “OVER THE SIDE” is with the boom 90° to the side frames and with the side frames extended. Blocks, slings and other load carrying devices must be on the ground during erection.

LOAD HOISTING DATA

Maximum Lifting Capacity In Pounds	Minimum Parts of Load Line	Maximum Hoisting Distance		
		RH Drum With Controlled Load Lowering	LH Drum With Controlled Load Lowering	LH Drum Without Controlled Load Lowering
		Ft.	Ft.	Ft.
500,000	14	59	30	46
490,280	12	69	35	53
449,427	11	76	38	58
408,570	10	83	42	64
367,710	9	93	47	71
326,850	8	104	52	80
286,000	7	119	60	92
245,140	6	139	70	107
204,280	5	167	84	129
163,420	4	209	105	161
122,570	3	279	141	215
81,710	2	419	211	323
40,850	1	839	423	647

Requires boom point hanger block. Based on 1-1/8 in. super grade loadline with 143,000 lbs. minimum breaking strength.

Maximum Lifting Capacity In Kilograms	Minimum Parts of Load Line	Maximum Hoisting Distance		
		RH Drum With Controlled Load Lowering	LH Drum With Controlled Load Lowering	LH Drum Without Controlled Load Lowering
		Meters	Meters	Meters
226,800	14	18.3	9.2	14.0
222,390	12	21.0	10.7	16.2
203,860	11	23.2	11.6	17.7
185,320	10	25.3	12.8	19.5
166,790	9	28.3	14.3	21.6
148,260	8	31.7	15.8	24.4
129,720	7	36.3	18.3	28.0
111,190	6	42.4	21.3	32.6
92,660	5	50.9	25.6	39.3
74,130	4	63.7	32.0	49.1
55,590	3	85.0	50.0	65.5
37,060	2	127.7	64.3	98.5
18,530	1	255.7	128.9	197.2

Requires boom point hanger block. Based on 28.6 mm dia. loadline with 64,865 kgs. minimum breaking strength.

BOOM AND JIB ERECTION

92HT Boom Length In Feet	Maximum No. No. 30 HJib In Feet	92 HT Boom Length In Meters	Maximum No. 30H Jib In Meters
280	0	85.3	0
270	0	82.3	0
260	45	79.3	13.7
250	85	76.2	25.9
240	95	73.2	29.0

Erection is over the idler end of the crawlers with A-frame fully raised and tumblers blocked.

PERFORMANCE

Travel Speed 0 to 1.1 MPH maximum (1.77 KmPH)
 Friction Swing 2.28 RPM maximum
 Hydrostatic Swing 1.9 RPM maximum

HOISTING PERFORMANCE:

Function	Single Line Pull at Single Line Speed	
	SLP (Pounds) at SLS (Feet Per Min.)	SLP (Kilograms) at SLS (Meters Per Min.)
Crane	40,000 lbs. at 165 FPM	18,144 kg at 50.1 MPM
Third Drum	15,000 lbs. at 225 FPM	6,804 kg at 68.6 MPM
Third Drum	21,000 lbs. at 220 FPM	9,525 kg at 67.0 MPM
G.D./S.H. Third Drum	40,000 lbs. at 90 FPM	18,144 kg at 27.4 MPM

Performance figures are based on machine equipped with standard engine and torque converter.

92HT BOOM COMPOSITION

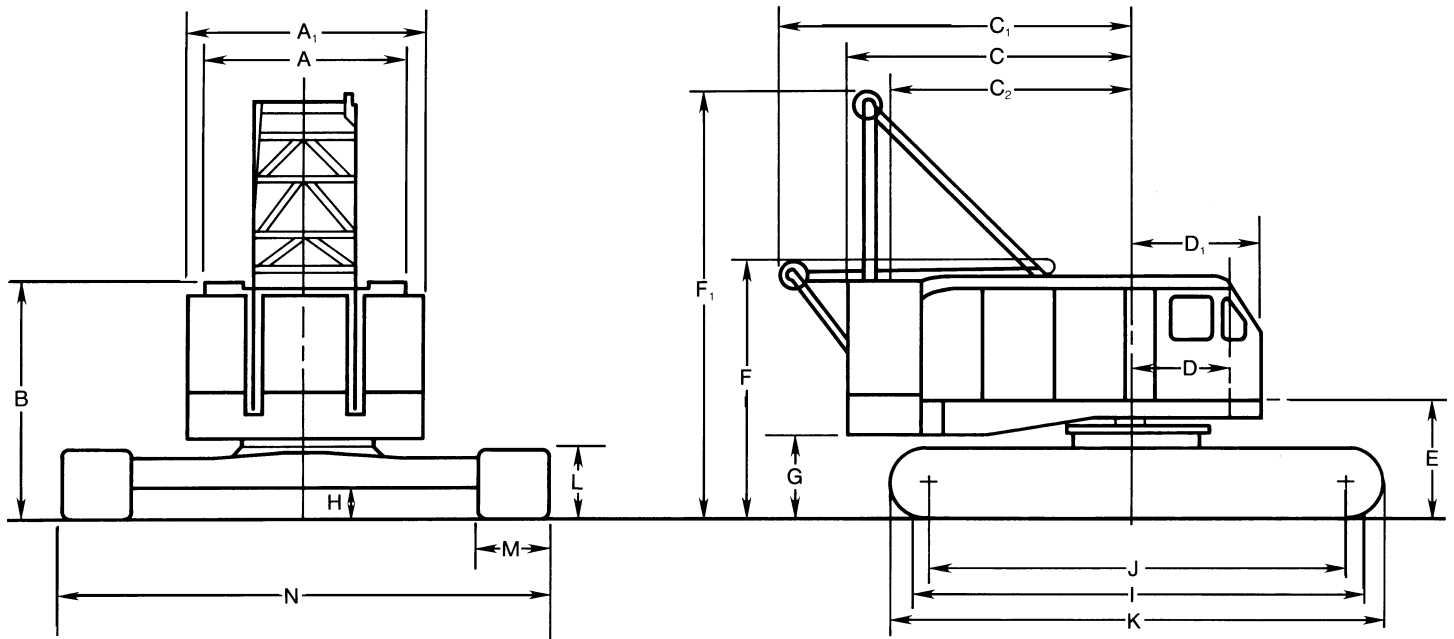
Boom Length		30 Ft. (9.1 m)	20 Ft. (6.1 m)	10 Ft. (3.0 m)	50 Ft. (15.2 m)	40 Ft. (12.2 m)
In Feet	In Meters	92HT Inner	92 HT Center	92ST Center	92ST Center	92H Outer
70	21.3	1	-	-	-	1
80	24.4	1	-	1	-	1
90	27.4	1	1	-	-	1
100	30.5	1	1	1	-	1
110	33.5	1	1	2	-	1
120	36.6	1	-	-	1	1
130	39.6	1	-	1	1	1
140	42.7	1	1	-	1	1
150	45.7	1	1	1	1	1
160	48.8	1	1	2	1	1
170	51.8	1	-	-	2	1
180	54.9	1	-	1	2	1
190	57.9	1	1	-	2	1
200	61.0	1	1	1	2	1
210	64.0	1	1	2	2	1
220	67.1	1	-	-	3	1
230	70.1	1	-	1	3	1
240	73.2	1	1	-	3	1
250	76.2	1	1	1	3	1
260	79.3	1	1	2	3	1
270	82.3	1	-	-	4	1
280	85.3	1	-	1	4	1

WEIGHTS

	LBS.	KG.
Lifting Crane with Basic 70 ft.		
92HT Crane Boom	384,280	174,306
Components Removable for Shipment:		
Counterweight	140,000	63,504
Boom Outer	10,070	4,568
Boom Inner	8,560	3,883
Telescopic Boom Stops	300	136
Outer Bail Assembly	2,450	1,111
A-Frame	5,320	2,413
Side Frames, 50 in. (1270 mm)		
Shoes (2)	91,260	41,395
Torque Tubes (2)	2,670	1,211
Carbody	47,460	21,528
Ground Bearing Pressure		
Standard Equipped Lift Crane	11.5 PSI	8,085 kg/m ²

NOTE:In accordance with varying material situations and the Company's policy of constant product improvement these specifications are subject to change without notice and without incurring responsibility to units previously sold.

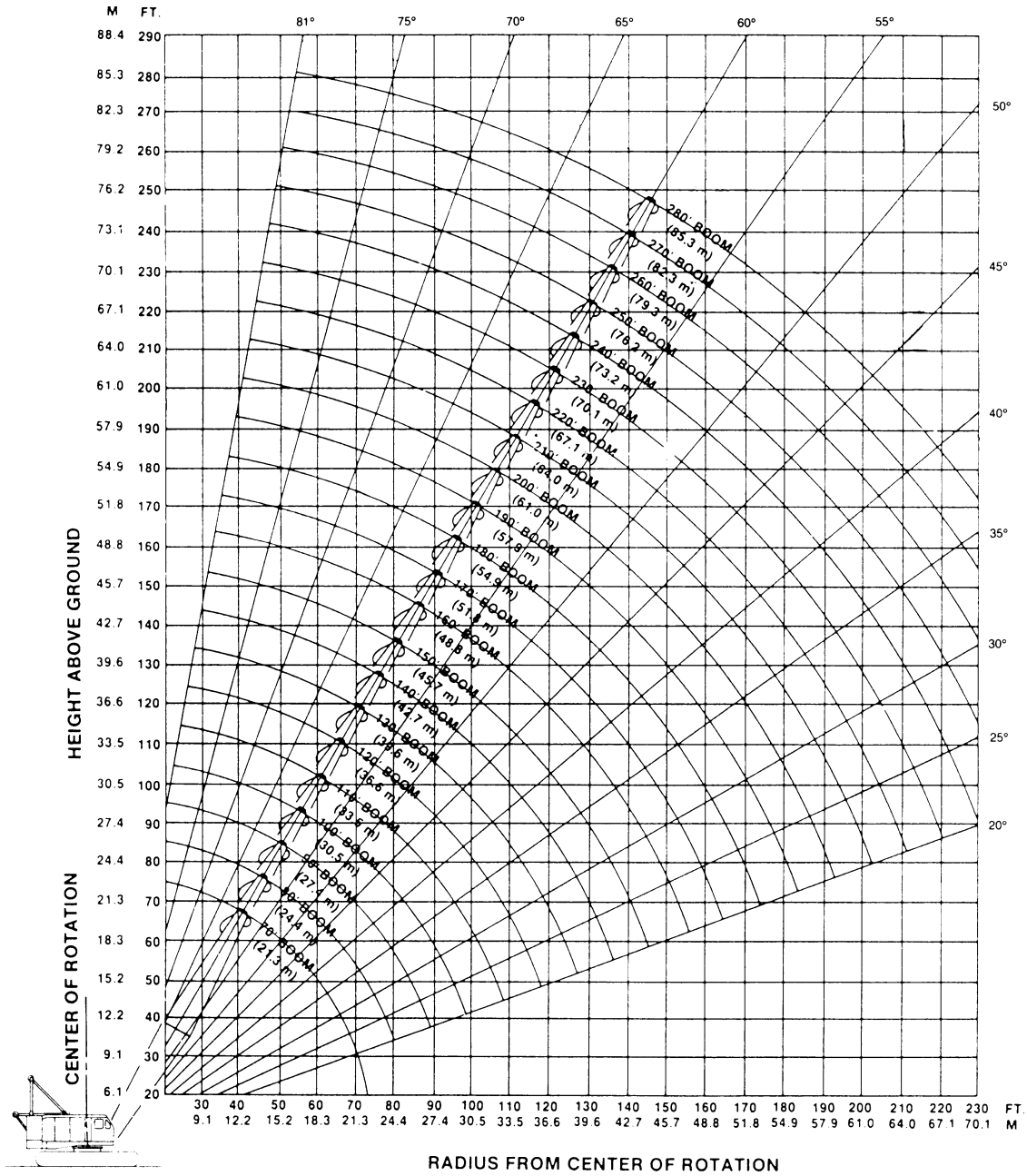
AMERICAN MODEL 9320 CRAWLER CRANE



GENERAL DIMENSIONS

		FT	MM
A.	Width of cab	11' 0"	3,343
A ₁ .	Width over counterweight	13' 2"	4,013
B.	Height over cab	13' 7-1/8"	4,143
C.	Tailswing	17' 0"	5,182
C ₁ .	Tailswing with A-frame lowered	24' 9"	7,544
C ₂ .	Tailswing less A- frame and counterweight	14' 11"	4,546
D.	Center of pivot to center to boom foot	5' 0-3/4"	1,066
D ₁ .	Center of pivot to front of cab	6' 10-1/2"	2,095
E.	Ground to center of boom foot	6' 9-1/8"	2,060
F.	Height over A-frame, lowered-ctwt. ON	14' 8-5/8"	4,486
F.	Height over A-frame, lowered-ctwt. OFF	14' 9-7/8"	4,518
F ₁ .	Height over A-Frame, raised	30' 4-7/8"	9,268
G.	Ground to bottom of counterweight	4' 8-3/8"	1,432
H.	Minimum ground clearance under crawler base	1' 7-1/2"	495
I.	Crawler bearing length	27' 9-1/2"	8,491
J.	Center to center crawler tumblers	26' 5"	8,053
K.	Overall length of crawlers	30' 5"	9,272
L.	Height of crawler track	3' 11-1/8"	1,197
M.	Width of tread shoes	50"	1,270
N.	Overall width over crawlers	25' 6"	7,772

AMERICAN MODEL 9320 CRAWLER CRANE



WE RESERVE THE RIGHT TO AMEND THESE SPECIFICATIONS AT ANY TIME WITHOUT NOTICE. THE ONLY WARRANTY APPLICABLE IS OUR STANDARD WRITTEN WARRANTY APPLICABLE TO THE PARTICULAR PRODUCT AND SALE. WE MAKE NO OTHER WARRANTY, EXPRESSED OR IMPLIED.

TEREX CRANES

American Crane Corporation
 202 Raleigh Street • Wilmington, NC 28412 USA
 (910) 395-8500 • FAX: (910) 395-8538