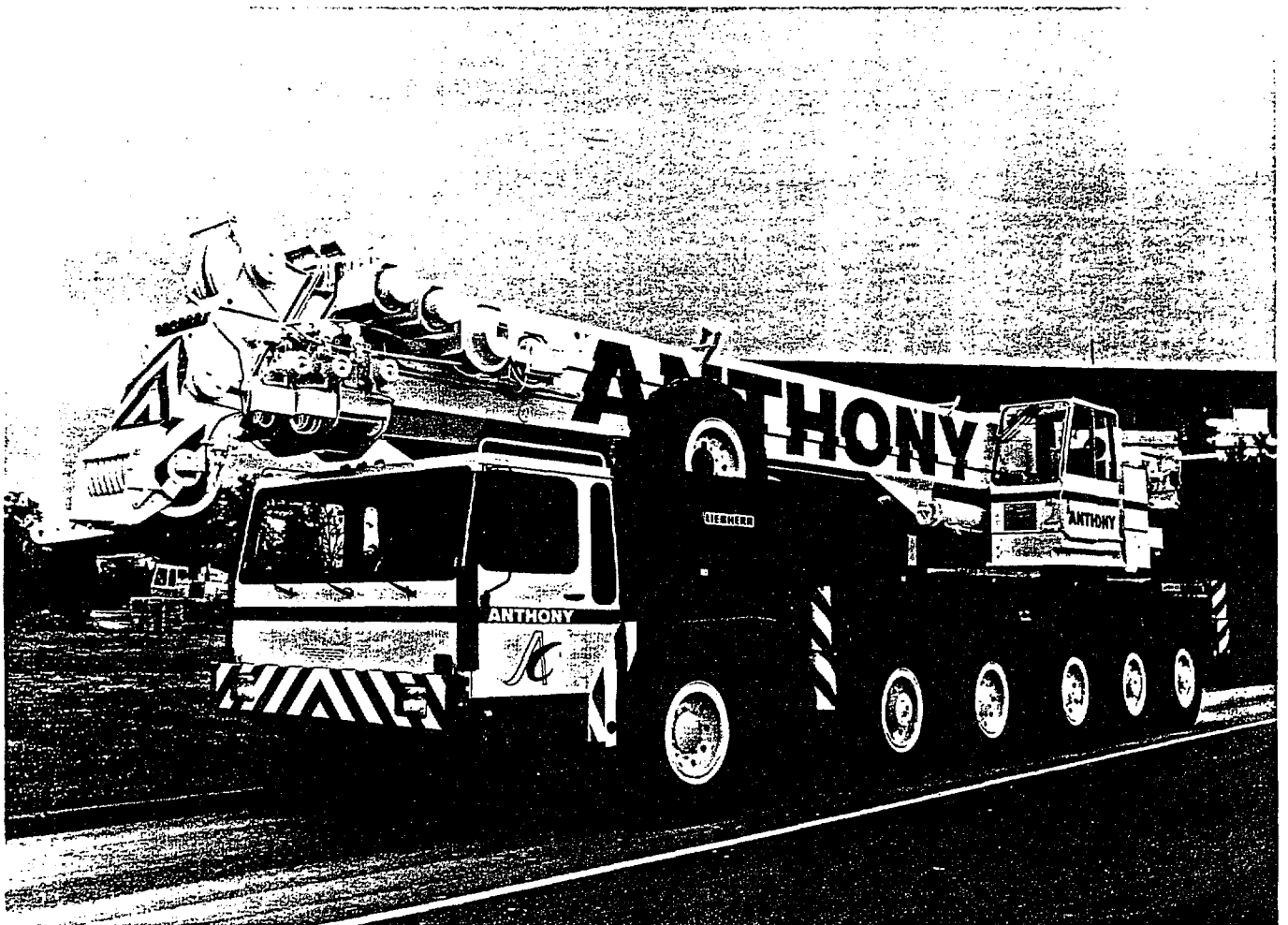




ANTHONY CRANE RENTAL

Telescopic Truck Crane

LTM 1140



LIEBHERR

Weights.

Axle loads (lbs). Crane in travel position.

| Axle | 1 | 2 | 3 | 4 | 5 | 6 | Total weight |
|------|-------|-------|-------|-------|-------|-------|--------------|
| lbs | 26500 | 26500 | 26500 | 26500 | 26500 | 26500 | 159000 |

Hook blocks and hooks.

| Load (kips) | No. of sheaves | No. of lines | Weight lbs |
|-------------|----------------|--------------|------------|
| 276 | 7 | 14 | 2866 |
| 221 | 5 | 10 | 2646 |
| 143 | 3 | 7 | 2006 |
| 66 | 1 | 3 | 1146 |
| 22 | - | 1 | 573 |

Working speeds.

Travel speeds in mph at max. engine speed of 2200 rpm.

| Gear | 1 | 2 | 3 | 4 | 5 | R |
|-----------------------|------------|-----|------|------|------|-----|
| On road (mph) | 8 | 13 | 20.5 | 30.4 | 39.8 | 4.3 |
| Off road (mph) | 4.7 | 7.5 | 11.8 | 17.4 | 23.9 | 2.5 |
| Max. gradient approx. | 45 % | | | | | |
| Tyres | 16.00 R 25 | | | | | |

Speeds of crane movements at max. engine speed of 2000 rpm.

| Drive | infinitely variable | Rope diameter / Rope length | Max. single line pull |
|-----------------|--|-----------------------------|-----------------------|
| Main winch | 0 - 477 ft/min single line | $2\frac{9}{32}$ " / 820' | 22500 lbs |
| Auxiliary winch | 0 - 197 ft/min single line | $2\frac{9}{32}$ " / 820' | 22500 lbs |
| Slewing gear | 0 - 1.6 rpm | | |
| Luffing | approx. 90 seconds to reach 83° boom angle | | |
| Telescoping | approx. 170 seconds for boom extension from 46 ft - 148 ft | | |

Lifting capacities at telescopic boom.

Telescopic boom: 46 ft - 148 ft. On outriggers, 360°. Counterweight: 57000 lbs.

| Radius ft | 46 ft | 63 ft | 77 ft | 94 ft | 108 ft | 125 ft | 139 ft | 148 ft | Radius ft | | | | |
|--------------|-------|-------|-------|-------|--------|--------|--------|--------|--------------|------|------|-----|---------|
| 10 | 400 | 307 | 252 | | | | | | 10 | | | | |
| 11 | 309 | 293 | 246 | | | | | | 11 | | | | |
| 12 | 294 | 283 | 239 | | | | | | 12 | | | | |
| 13 | 284 | 276 | 232 | | | | | | 13 | | | | |
| 14 | 270 | 265 | 223 | 188 | | | | | 14 | | | | |
| 15 | 257 | 253 | 215 | 182 | | | | | 15 | | | | |
| 16 | 245 | 242 | 209 | 176 | | | | | 16 | | | | |
| 17 | 234 | 233 | 203 | 171 | | | | | 17 | | | | |
| 18 | 224 | 223 | 197 | 167 | 139 | 90 | | | 18 | | | | |
| 20 | 204 | 204 | 184 | 157 | 133 | 84 | 110 | | 20 | | | | |
| 22 | 185 | 185 | 174 | 146 | 127 | 79.5 | 107 | | 22 | | | | |
| 24 | 168 | 168 | 163 | 137 | 121 | 75.5 | 104 | 87 | 24 | | | | |
| 26 | 152 | 152 | 149 | 129 | 115 | 72 | 102 | 85 | 26 | | | | |
| 28 | 139 | 139 | 137 | 123 | 110 | 68.5 | 98 | 83 | 72 | 67 | 60 | 28 | |
| 30 | 128 | 128 | 126 | 117 | 105 | 65.5 | 94 | 81 | 70 | 66 | 59.3 | 30 | |
| 32 | 118 | 118 | 116 | 111 | 101 | 63 | 90 | 78.5 | 67 | 65 | 58.5 | 32 | |
| 34 | | | 108 | 104 | 96.5 | 60.5 | 86 | 76 | 65 | 64 | 57.5 | 34 | |
| 36 | | | 99.5 | 96 | 92 | 57.8 | 83 | 74 | 63 | 62 | 56.4 | 36 | |
| 38 | | | 91.5 | 89 | 88 | 55.3 | 79.5 | 72 | 60.5 | 60.5 | 55.2 | 38 | |
| 40 | | | 84 | 82 | 83 | 53 | 76 | 70 | 58.8 | 58.9 | 54 | 40 | |
| 45 | | | 68.5 | 67.5 | 69 | 48.3 | 68.5 | 65.5 | 54.4 | 55.5 | 50.3 | 45 | |
| 50 | | | 57.2 | 56.3 | 57.9 | 44 | 58.9 | 59 | 50.4 | 52.3 | 47 | 50 | |
| 55 | | | | 47.3 | 49.1 | 40.3 | 50 | 52 | 46.7 | 48.9 | 44 | 55 | |
| 60 | | | | 39.9 | 41.8 | 37.2 | 42.7 | 44.7 | 43.4 | 45.1 | 41.2 | 60 | |
| 65 | | | | 33.8 | 35.6 | 34.5 | 36.7 | 38.9 | 40.7 | 40.1 | 38.7 | 65 | |
| 70 | | | | | 30.7 | 32.3 | 31.8 | 34 | 36.4 | 35.3 | 35 | 70 | |
| 75 | | | | | 26.4 | 30.4 | 27.5 | 29.8 | 32.3 | 31.2 | 31.2 | 75 | |
| 80 | | | | | 22.6 | 28.7 | 23.6 | 26.1 | 28.7 | 27.6 | 27.6 | 80 | |
| 85 | | | | | 19.4 | 27.2 | 20.3 | 22.7 | 25.6 | 24.2 | 24.2 | 85 | |
| 90 | | | | | | | 17.5 | 20 | 22.7 | 21.5 | 21.5 | 90 | |
| 95 | | | | | | | 15.2 | 17.5 | 20.2 | 19 | 19 | 95 | |
| 100 | | | | | | | | 15.2 | 18.1 | 16.8 | 16.8 | 100 | |
| 105 | | | | | | | | 13.2 | 16.1 | 14.8 | 14.8 | 105 | |
| 110 | | | | | | | | 11.5 | 14.4 | 13.1 | 13.1 | 110 | |
| 115 | | | | | | | | | | 11.5 | 11.5 | 115 | |
| 120 | | | | | | | | | | 10.1 | 10.1 | 120 | |
| 125 | | | | | | | | | | | 8.7 | 125 | |
| 130 | | | | | | | | | | | 7.6 | 130 | |
| Telesc. | I | 0 | 50 | 92 | 92 | 0 | 92 | 92 | 50 | 92 | 100 | I | Telesc. |
| | II | 0 | 0 | 0 | 50 | 50 | 92 | 92 | 92 | 92 | 100 | II | |
| % | III | 0 | 0 | 0 | 0 | 92 | 0 | 50 | 92 | 92 | 100 | III | % |

" over rear

TAB 74122

Remarks referring to load charts.

1. The tabulated lifting capacities do not exceed 85 % of the tipping load.
2. The crane's structural steelwork is in accordance with DIN 15018, part 3. Design and construction of the crane comply with DIN 15018, part 2, and which F. E. M. regulations.
3. The 85 % overturning limit values take into account wind force 5 = wind speed 20 mph.
4. Lifting capacities are given in kips.
5. The weight of the hook blocks and hooks must be deducted from the lifting capacities.
6. Working radii are measured from the slewing centreline.
7. The lifting capacities given for the telescopic boom only apply if the folding jib is taken off.
8. Lifting capacities are subject to modifications.

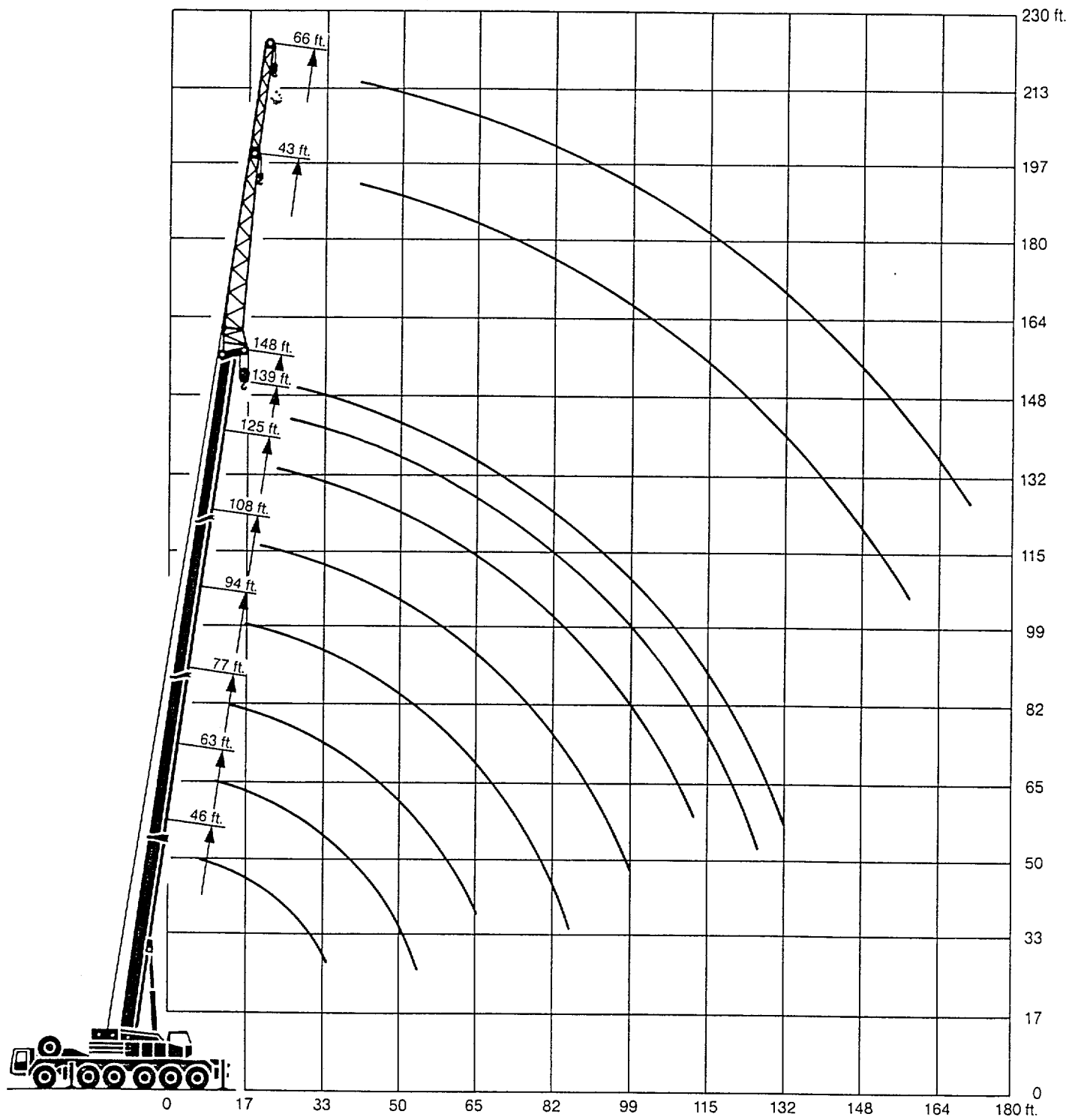
Lifting capacities are given in kips (1,000 lbs).

Telescopic boom: 46 ft - 148 ft. On outriggers, 360°. Counterweight: 42000 lbs.

| Radius ft | 46 ft | 63 ft | 77 ft | 94 ft | | 108 ft | 125 ft | | 139 ft | 148 ft | Radius ft | | |
|--------------|-------|-------|-------|-------|------|--------|--------|------|--------|--------|--------------|-----|---------|
| 10 | 307 | 252 | | | | | | | | | 10 | | |
| 11 | 293 | 246 | | | | | | | | | 11 | | |
| 12 | 283 | 239 | | | | | | | | | 12 | | |
| 13 | 276 | 232 | | | | | | | | | 13 | | |
| 14 | 265 | 223 | 188 | | | | | | | | 14 | | |
| 15 | 253 | 215 | 181 | | | | | | | | 15 | | |
| 16 | 242 | 209 | 173 | | | | | | | | 16 | | |
| 17 | 232 | 203 | 168 | | | | | | | | 17 | | |
| 18 | 221 | 197 | 164 | 139 | 90 | | | | | | 18 | | |
| 20 | 200 | 183 | 157 | 133 | 84 | 110 | | | | | 20 | | |
| 22 | 180 | 171 | 146 | 127 | 79.5 | 107 | | | | | 22 | | |
| 24 | 162 | 158 | 137 | 121 | 75.5 | 104 | 87 | 76 | | | 24 | | |
| 26 | 147 | 143 | 129 | 115 | 72 | 99.5 | 85 | 73 | | | 26 | | |
| 28 | 135 | 131 | 122 | 110 | 68.5 | 95.5 | 83 | 71 | 67 | 58.9 | 28 | | |
| 30 | 123 | 118 | 114 | 105 | 65.5 | 92 | 81 | 69 | 66 | 58.3 | 30 | | |
| 32 | 111 | 106 | 104 | 101 | 63 | 88.5 | 78.5 | 66.5 | 64.5 | 57.6 | 32 | | |
| 34 | | 96.5 | 94 | 94.5 | 60.5 | 85 | 76 | 64 | 63 | 56.6 | 34 | | |
| 36 | | 88 | 86 | 87 | 57.8 | 81 | 74 | 62 | 61.5 | 55.4 | 36 | | |
| 38 | | 79.5 | 77.5 | 79 | 55.3 | 77.5 | 72 | 59.9 | 59.8 | 54.2 | 38 | | |
| 40 | | 72 | 70 | 72 | 53 | 73.5 | 69.5 | 57.9 | 58.2 | 52.9 | 40 | | |
| 45 | | 58.2 | 56.9 | 58.7 | 48.3 | 59.8 | 61.5 | 53.5 | 54.7 | 49.2 | 45 | | |
| 50 | | 48 | 46.8 | 48.7 | 44 | 49.7 | 52.1 | 49.6 | 50.9 | 45.8 | 50 | | |
| 55 | | | 38.5 | 40.5 | 40.3 | 41.4 | 43.8 | 45 | 45.3 | 42.4 | 55 | | |
| 60 | | | 31.6 | 33.6 | 37.2 | 34.5 | 36.9 | 39.8 | 38.5 | 38.6 | 60 | | |
| 65 | | | 26 | 28 | 34.3 | 29.1 | 31.5 | 34.4 | 33.1 | 33.1 | 65 | | |
| 70 | | | | 23.5 | 31.6 | 24.5 | 27 | 29.9 | 28.6 | 28.6 | 70 | | |
| 75 | | | | 19.6 | 28.4 | 20.5 | 23.1 | 26 | 24.7 | 24.7 | 75 | | |
| 80 | | | | 16.3 | 25.1 | 17.2 | 19.6 | 22.7 | 21.3 | 21.3 | 80 | | |
| 85 | | | | 13.4 | 22.4 | 14.5 | 16.7 | 19.8 | 18.3 | 18.3 | 85 | | |
| 90 | | | | | | 12.1 | 14.3 | 17.3 | 15.9 | 15.9 | 90 | | |
| 95 | | | | | | 10.1 | 12.2 | 15.1 | 13.7 | 13.7 | 95 | | |
| 100 | | | | | | | 10.3 | 13.1 | 11.8 | 11.8 | 100 | | |
| 105 | | | | | | | 8.6 | 11.2 | 10.1 | 10.1 | 105 | | |
| 110 | | | | | | | 7.3 | 9.9 | 8.6 | 8.6 | 110 | | |
| 115 | | | | | | | | 7.2 | 7.4 | 7.4 | 115 | | |
| 120 | | | | | | | | 6 | 6.2 | 6.2 | 120 | | |
| 125 | | | | | | | | 5 | 5 | 5 | 125 | | |
| 130 | | | | | | | | | 4 | 4 | 130 | | |
| Telesc. | I | 0 | 50 | 92 | 92 | 0 | 92 | 92 | 50 | 92 | 100 | I | Telesc. |
| | II | 0 | 0 | 0 | 50 | 50 | 92 | 92 | 92 | 92 | 100 | II | |
| % | III | 0 | 0 | 0 | 0 | 92 | 0 | 50 | 92 | 92 | 100 | III | % |

TAB 74042

Lifting heights.



Lifting capacities at the folding jib.

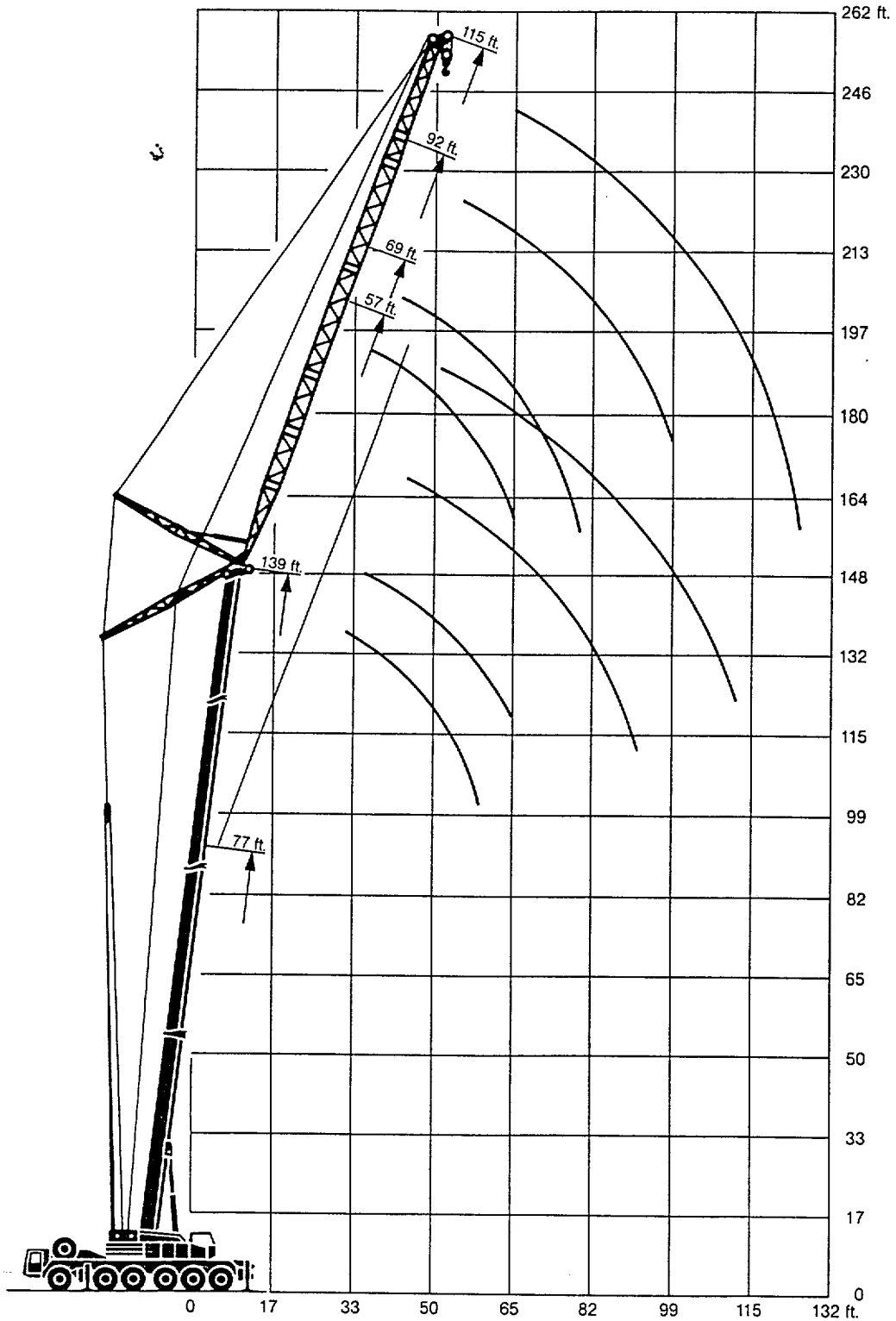
Telescopic boom: 94 ft – 148 ft. Folding jib: 43 ft – 66 ft. On outriggers, 360°. Counterweight: 42000 lbs.

| Radius ft | Telescopic boom | | | | | | | | | | | | | | Radius ft | | |
|--------------|----------------------|------|----------------------|------|-------|------|--------|------|----------------------|------|--------|------|-------|------|--------------|--------|-----|
| | 125 ft | | 139 ft | | | | 148 ft | | 94 ft | | 139 ft | | | | | 148 ft | |
| | Folding jib 43 ft | | Folding jib 43 ft | | 43 ft | | 66 ft | | Folding jib 66 ft | | | | 66 ft | | | | |
| | 0° | 20° | 0° | 20° | 0° | 20° | 0° | 20° | 0° | 20° | 0° | 20° | 0° | 20° | 0° | 20° | |
| 30 | | | | | | | | | 28.9 | | | | | | | | 30 |
| 32 | | | | | | | | | 28.1 | | | | | | | | 32 |
| 34 | 41.6 | | | | | | | | 27.4 | | | | | | | | 34 |
| 36 | 41.4 | | | | | | | | 26.8 | | | | | | | | 36 |
| 38 | 41.1 | | | | | | | | 26.2 | | | | | | | | 38 |
| 40 | 40.8 | | 32.1 | | 28.8 | | | 25.6 | | 21.8 | | 19.8 | | 17.8 | | | 40 |
| 45 | 39.5 | | 31.1 | | 27.8 | | | 23.9 | | 21.3 | | 19.7 | | 17.7 | | | 45 |
| 50 | 37.5 | 23.2 | 29.6 | | 26.3 | | | 21.5 | | 20.6 | | 19.5 | | 17.5 | | | 50 |
| 55 | 35.3 | 22.2 | 28 | 19.1 | 24.7 | 13.7 | | 19.4 | 14.3 | 20 | | 19.3 | | 17.2 | | | 55 |
| 60 | 33.2 | 21.2 | 26.2 | 18.4 | 23.1 | 12.9 | | 17.9 | 13.8 | 19.2 | 13.4 | 19 | | 16.6 | | | 60 |
| 65 | 31.3 | 20 | 24.7 | 17.5 | 21.6 | 12.4 | | 16.7 | 13.1 | 18 | 12.9 | 17.8 | | 15.6 | | | 65 |
| 70 | 28.9 | 19 | 23.2 | 16.8 | 20.1 | 11.9 | | 15.5 | 12.6 | 17 | 12.3 | 16.8 | 11.8 | 14.7 | 9.1 | | 70 |
| 75 | 25.8 | 18 | 21.7 | 16.1 | 18.7 | 11.4 | | 14.5 | 12.1 | 16 | 11.9 | 15.8 | 11.5 | 13.9 | 8.6 | | 75 |
| 80 | 22.4 | 17 | 20.4 | 15.3 | 17.6 | 10.9 | | 13.6 | 11.5 | 15 | 11.6 | 14.8 | 11.1 | 13.1 | 8.3 | | 80 |
| 85 | 19.4 | 16.1 | 19.3 | 14.6 | 16.6 | 10.4 | | 12.6 | 10.8 | 14.2 | 11.3 | 14.2 | 10.6 | 12.4 | 8 | | 85 |
| 90 | 17 | 15.3 | 17.3 | 14.1 | 15.6 | 10.1 | | 11.9 | 10.3 | 13.3 | 10.8 | 13.3 | 10.4 | 11.9 | 7.8 | | 90 |
| 95 | 14.8 | 14.5 | 15.3 | 13.5 | 14.5 | 9.6 | | 11.3 | 9.8 | 12.6 | 10.4 | 12.7 | 10.2 | 11.3 | 7.6 | | 95 |
| 100 | 12.9 | 13.6 | 13.3 | 12.9 | 13.1 | 9.2 | | 10.6 | 9.4 | 12 | 10 | 12.2 | 9.8 | 10.6 | 7.4 | | 100 |
| 105 | 11 | 12.8 | 11.5 | 12.3 | 11.2 | 8.8 | | 10.1 | 9 | 11.5 | 9.7 | 11.7 | 9.5 | 10.1 | 7.1 | | 105 |
| 110 | 9.5 | 11.6 | 10 | 11.8 | 9.7 | 8.3 | | 9.6 | 8.7 | 10.8 | 9.4 | 11 | 9.3 | 9.8 | 6.9 | | 110 |
| 115 | 8.1 | 10.2 | 8.6 | 10.9 | 8.3 | 7.9 | | 9.1 | 8.3 | 10.4 | 9 | 10.1 | 9 | 9.4 | 6.7 | | 115 |
| 120 | 6.8 | 8.8 | 7.3 | 9.6 | 7.1 | 7.6 | | 8.6 | 7.8 | 10 | 8.6 | 9 | 8.6 | 8.7 | 6.6 | | 120 |
| 125 | 5.7 | 7.4 | 6.1 | 8.3 | 5.9 | 7.2 | | 8.1 | 7.5 | 9.4 | 8.2 | 7.9 | 8.2 | 7.6 | 6.4 | | 125 |
| 130 | 4.7 | 6.2 | 5.1 | 7.1 | 4.9 | 6.7 | | 7.8 | 7.3 | 8.4 | 8 | 6.9 | 8 | 6.5 | 6.2 | | 130 |
| 135 | 3.8 | 5.2 | 4.2 | 6.1 | 4 | 5.9 | | 7.5 | 7 | 7.4 | 7.8 | 5.9 | 7.7 | 5.5 | 5.9 | | 135 |
| 140 | 2.9 | 4.2 | 3.4 | 5.1 | 3.2 | 4.9 | | 7.1 | 6.7 | 6.5 | 7.6 | 4.9 | 7.1 | 4.7 | 5.7 | | 140 |
| 145 | | | 2.6 | 4.1 | | 3.9 | | | | 5.6 | 7.2 | 4.1 | 6 | 3.9 | 5.5 | | 145 |
| 150 | | | 1.9 | 3.2 | | 3 | | | | 4.8 | 6.3 | 3.2 | 5 | 3 | 4.9 | | 150 |
| 155 | | | | | | | | | | 4.1 | 5.5 | 2.5 | 4.2 | 2.3 | 4.2 | | 155 |
| 160 | | | | | | | | | | 3.5 | 4.7 | | 3.4 | | 3.3 | | 160 |
| 165 | | | | | | | | | | 3 | 3.8 | | | | | | 165 |
| 170 | | | | | | | | | | 2.3 | 3.2 | | | | | | 170 |

TAB 74043/74139

Lifting heights.

Luffing lattice jib.



Lifting capacities at the luffing lattice jib.

Telescopic boom: 77 ft – 139 ft. Luffing lattice jib: 57 ft – 115 ft. On outriggers, 360°. Counterweight: 42000 lbs.

| Radius ft | Telescopic boom | | | | | | | | Radius ft | |
|--------------|-----------------|-------|-------|--------|-------------|-------|-------|--------|--------------|-----|
| | 77 ft | | | | 108 ft | | | | | |
| | Luffing jib | | | | Luffing jib | | | | | |
| | 57 ft | 69 ft | 92 ft | 115 ft | 57 ft | 69 ft | 92 ft | 115 ft | | |
| 30 | 73 | | | | | | | | 30 | |
| 32 | 73 | | | | | | | | 32 | |
| 34 | 73 | | | | | 38.8 | | | 34 | |
| 36 | 73 | | | | | 38.8 | | | 36 | |
| 38 | 73 | 63 | | | | 38.8 | | | 38 | |
| 40 | 73 | 63 | | | | 38.8 | 32.9 | | 40 | |
| 42 | 73 | 63 | | | | 38.8 | 32.9 | | 42 | |
| 44 | 70 | 63 | 46.1 | | | 38.8 | 32.9 | | 44 | |
| 46 | 66 | 63 | 46.1 | | | 38.8 | 32.9 | | 46 | |
| 48 | 62.5 | 63 | 46.1 | | | 38.8 | 32.9 | | 48 | |
| 50 | 59.2 | 62 | 46.1 | | | 38.8 | 32.9 | 23.2 | 50 | |
| 52 | 55.6 | 58.9 | 46.1 | | | 38.8 | 32.9 | 23.2 | 52 | |
| 54 | 52.1 | 56 | 46.1 | 31.5 | | 38.8 | 32.9 | 23.2 | 54 | |
| 56 | 48.8 | 53 | 46.1 | 31.5 | | 38.8 | 32.9 | 23.2 | 56 | |
| 58 | 45.4 | 50.1 | 46.1 | 31.5 | | 38.8 | 32.9 | 23.2 | 58 | |
| 60 | | 47.1 | 45.7 | 31.5 | | | 32.9 | 23.2 | 14.6 | 60 |
| 65 | | 39.7 | 43.9 | 31.5 | | | 32.9 | 23.2 | 14.6 | 65 |
| 70 | | | 40.1 | 31.5 | | | 32.9 | 23.2 | 14.6 | 70 |
| 75 | | | 36.2 | 31.5 | | | | 23.2 | 14.6 | 75 |
| 80 | | | 32.3 | 31.5 | | | | 23.2 | 14.6 | 80 |
| 85 | | | 28.5 | 31.5 | | | | 23.2 | 14.6 | 85 |
| 90 | | | 24.6 | 29.3 | | | | 23.2 | 14.6 | 90 |
| 95 | | | | 27.1 | | | | | 14.6 | 95 |
| 100 | | | | 24.8 | | | | | 14.6 | 100 |
| 105 | | | | 22.5 | | | | | 14.6 | 105 |
| 110 | | | | 20.1 | | | | | 14.6 | 110 |
| 115 | | | | | | | | | 14.6 | 115 |
| 120 | | | | | | | | | | 120 |

Telescopic boom: 77 ft – 139 ft. Luffing lattice jib: 57 ft – 115 ft. On outriggers, 360°. Counterweight: 42000 lbs.

| Radius ft | Telescopic boom | | | | | | | | Radius ft | |
|--------------|-----------------|-------|-------|--------|-------------|-------|-------|--------|--------------|-----|
| | 125 ft | | | | 139 ft | | | | | |
| | Luffing jib | | | | Luffing jib | | | | | |
| | 57 ft | 69 ft | 92 ft | 115 ft | 57 ft | 69 ft | 92 ft | 115 ft | | |
| 38 | 28 | | | | | | | | 38 | |
| 40 | 28 | | | | | 19.4 | | | 40 | |
| 42 | 28 | | | | | 19.4 | | | 42 | |
| 44 | 28 | 23.6 | | | | 19.4 | | | 44 | |
| 46 | 28 | 23.6 | | | | 19.4 | 16.5 | | 46 | |
| 48 | 28 | 23.6 | | | | 19.4 | 16.5 | | 48 | |
| 50 | 28 | 23.6 | 16.5 | | | 19.4 | 16.5 | | 50 | |
| 52 | 28 | 23.6 | 16.5 | | | 19.4 | 16.5 | | 52 | |
| 54 | 28 | 23.6 | 16.5 | | | 19.4 | 16.5 | | 54 | |
| 56 | 28 | 23.6 | 16.5 | | | 19.4 | 16.5 | | 56 | |
| 58 | 28 | 23.6 | 16.5 | | | 19.4 | 16.5 | | 58 | |
| 60 | 28 | 23.6 | 16.5 | 9.7 | | 19.4 | 16.5 | 11.2 | 60 | |
| 65 | 28 | 23.6 | 16.5 | 9.7 | | 19.4 | 16.5 | 11.2 | 65 | |
| 70 | | 23.6 | 16.5 | 9.7 | | | 16.5 | 11.2 | 6.2 | 70 |
| 75 | | | 16.5 | 9.7 | | | 16.5 | 11.2 | 6.2 | 75 |
| 80 | | | 16.5 | 9.7 | | | | 11.2 | 6.2 | 80 |
| 85 | | | 16.5 | 9.7 | | | | 11.2 | 6.2 | 85 |
| 90 | | | 16.5 | 9.7 | | | | 11.2 | 6.2 | 90 |
| 95 | | | 16.5 | 9.7 | | | | 11.2 | 6.2 | 95 |
| 100 | | | | 9.7 | | | | | 6.2 | 100 |
| 105 | | | | 9.7 | | | | | 6.2 | 105 |
| 110 | | | | 9.7 | | | | | 6.2 | 110 |
| 115 | | | | 9.7 | | | | | 6.2 | 115 |
| 120 | | | | | | | | | 6.2 | 120 |